



Price List No. MVA-05R
Supersedes Price List No. MVA-05



Hayward Flow Control

Manual Plastic Valves and Accessories



Price List
Effective July 9, 2012
Updated August 20, 2012



Hayward Flow Control
A Division of Hayward Industries, Inc.
One Hayward Industrial Drive, Clemmons, NC 27012 USA
Phone 1-888-429-4635 • Fax 1-888-778-8410
e-mail: hflow@haywardnet.com
web site: www.haywardflowcontrol.com

Table of Contents

Manual Valves	Page
Ball Valves	
TB Series True Union Ball Valves	3-4
TBZ Series "Z-Ball" True Union Ball Valves	5
CV Series Profile2™ Control Valves	6
True Union Ball Valve Options	7
TW Series Three-Way True Union Ball Valves	8-9
CF Series Cross Flow Three Way True Union Ball Valves	10-11
LA Series Lateral Three-Way True Union Ball Valves	12-13
QIC2™ Compact Ball Valves	14
Check Valves	
TC Series True Union Ball Check Valves	14-15
True Union Ball Check Foot Valve Screens	16
SW Series Swing Check Valves	16
YC Series Y-Check Valves	17-18
SLC Series Spring Loaded Y-Check Valves	18
YC Series True Union Y-Check Valves	19-20
SLC Series Spring-Loaded True Union Y-Check Valves	21
WCV & WC Series Wafer Check Valves	22-24
Butterfly Valves	
BY Series Butterfly Valves, 1-1/2"-12".....	25
BY Series Butterfly Valve Options	26
BYB Series Butterfly Valves, 10"- 24" – Gear Operated	26
Stem Extension Options.....	27-28
BYCS/ BYCN Series Butterfly Valves	28-29
Flow Control Valves	
SV Series Solenoid Valves	29
DAB Series Diaphragm Valves	30-33
RV Series Pressure Relief Valves	34
PR Series Pressure Regulator Valves.....	34
AV Series Angle Globe Valves.....	34
NVA Series Needle Valves.....	35
Universal Stopcock.....	35
AR Series Air Release Valves	35
VB Series Vacuum Breaker	35
Ready Flanges	36
Bulkhead Fittings and Accessories	
BFAS Series Bulkhead Fittings.....	36-37
BFA Series Bulkhead Fittings	37-40
SF Series Self-Aligning Bulkhead Fittings	41
CCP Series Tank-Tite™	41
GG Series Gauges and Gauge Guards	42-43
Commercial Valves	
TBB Series True Union Ball Valves	44-46
QVC Series Compact Ball Valves	46-47
QTA Series True Union Compact Ball Valves	47
Spare Parts	48-58
NSF/ANSI 61	59
Terms & Conditions of Sale	Back Cover



TB SERIES TRUE UNION BALL VALVES

All True Union Ball Valves are assembled with silicone free lubricant and have PTFE seats.
2-1/2" & up design pictured. For Actuator-ready, see Price List ACT-05.

PVC FPM O-RINGS

Price Code A

SIZE	END CONN.	PRICE	PART NO.	CTN. QTY.	SIZE	END CONN.	PRICE	PART NO.	CTN. QTY.
1/4"	Threaded	\$64.15	TB1025T	12	2-1/2"	Threaded	\$468.35	TB1250T	1
	Socket	\$64.15	TB1025S	12		Socket	\$468.35	TB1250S	1
3/8"	Threaded	\$64.15	TB1037T	12		Flanged	\$698.25	TB1250F	1
	Socket	\$64.15	TB1037S	12	3"	Threaded	\$484.05	TB1300T	1
1/2"	Skt/Thd*	\$64.15	TB1050ST	12		Socket	\$484.05	TB1300S	1
	Flanged	\$115.25	TB1050F	12		Flanged	\$939.00	TB1300F	1
3/4"	Skt/Thd*	\$75.80	TB1075ST	12	4"	Threaded	\$817.15	TB1400T	1
	Flanged	\$138.45	TB1075F	12		Socket	\$817.15	TB1400S	1
1"	Skt/Thd*	\$92.05	TB1100ST	12		Flanged	\$1,478.20	TB1400F	1
	Flanged	\$190.30	TB1100F	6	**6"	Flanged	\$2,029.70	TB1600F	1
1-1/4"	Skt/Thd*	\$122.15	TB1125ST	6	* 1/2" - 2" valves are supplied with socket and threaded end connectors. ** 4" valve venturied to 6"				
	Flanged	\$317.00	TB1125F	6					
1-1/2"	Skt/Thd*	\$150.00	TB1150ST	6					
	Flanged	\$340.15	TB1150F	6					
2"	Skt/Thd*	\$196.45	TB1200ST	1					
	Flanged	\$408.20	TB1200F	1					

PVC EPDM O-RINGS

Price Code A

SIZE	END CONN.	PRICE	PART NO.	CTN. QTY.	SIZE	END CONN.	PRICE	PART NO.	CTN. QTY.
1/2"	Skt/Thd*	\$56.40	TB1050STE	12	2-1/2"	Threaded	\$396.80	TB1250TE	1
	Flanged	\$103.55	TB1050FE	12		Socket	\$396.80	TB1250SE	1
3/4"	Skt/Thd*	\$69.60	TB1075STE	12		Flanged	\$685.40	TB1250FE	1
	Flanged	\$126.80	TB1075FE	12	3"	Threaded	\$410.80	TB1300TE	1
1"	Skt/Thd*	\$80.45	TB1100STE	12		Socket	\$410.80	TB1300SE	1
	Flanged	\$171.70	TB1100FE	6		Flanged	\$829.55	TB1300FE	1
1-1/4"	Skt/Thd*	\$106.75	TB1125STE	6	4"	Threaded	\$723.00	TB1400TE	1
	Flanged	\$275.25	TB1125FE	6		Socket	\$723.00	TB1400SE	1
1-1/2"	Skt/Thd*	\$134.55	TB1150STE	6		Flanged	\$1,327.10	TB1400FE	1
	Flanged	\$318.60	TB1150FE	6	**6"	Flanged	\$1,950.90	TB1600FE	1
2"	Skt/Thd*	\$176.35	TB1200STE	1	* 1/2" - 2" valves are supplied with socket and threaded end connectors. ** 4" valve venturied to 6"				
	Flanged	\$374.25	TB1200FE	1					



TB SERIES TRUE UNION BALL VALVES

All True Union Ball Valves are assembled with silicone free lubricant and have PTFE seats.
2-1/2" & up design pictured. For Actuator-ready, see Price List ACT-05.

CPVC FPM O-RINGS

Price Code A

SIZE	END CONN.	PRICE	PART NO.	CTN. QTY.	SIZE	END CONN.	PRICE	PART NO.	CTN. QTY.
1/2"	Skt/Thd*	\$87.35	TB2050ST	12	2-1/2"	Threaded	\$861.80	TB2250T	1
	Flanged	\$147.25	TB2050F	12		Socket	\$861.80	TB2250S	1
3/4"	Skt/Thd*	\$108.55	TB2075ST	12		Flanged	\$1,024.50	TB2250F	1
	Flanged	\$169.35	TB2075F	12	3"	Threaded	\$888.55	TB2300T	1
1"	Skt/Thd*	\$132.85	TB2100ST	12		Socket	\$888.55	TB2300S	1
	Flanged	\$248.90	TB2100F	6		Flanged	\$1,467.60	TB2300F	1
1-1/4"	Skt/Thd*	\$183.75	TB2125ST	6	4"	Threaded	\$1,523.95	TB2400T	1
	Flanged	\$407.05	TB2125F	6		Socket	\$1,523.95	TB2400S	1
1-1/2"	Skt/Thd*	\$220.05	TB2150ST	6		Flanged	\$2,426.25	TB2400F	1
	Flanged	\$451.10	TB2150F	6	**6"	Flanged	\$3,449.95	TB2600F	1
2"	Skt/Thd*	\$302.10	TB2200ST	1	* 1/2" - 2" valves are supplied with socket and threaded end connectors. ** 4" valve venturied to 6"				
	Flanged	\$649.55	TB2200F	1					

CPVC EPDM O-RINGS

Price Code A

SIZE	END CONN.	PRICE	PART NO.	CTN. QTY.	SIZE	END CONN.	PRICE	PART NO.	CTN. QTY.
1/2"	Skt/Thd*	\$82.00	TB2050STE	12	2-1/2"	Threaded	\$809.70	TB2250TE	1
	Flanged	\$136.65	TB2050FE	12		Socket	\$809.70	TB2250SE	1
3/4"	Skt/Thd*	\$103.30	TB2075STE	12		Flanged	\$874.75	TB2250FE	1
	Flanged	\$157.90	TB2075FE	12	3"	Threaded	\$834.40	TB2300TE	1
1"	Skt/Thd*	\$125.30	TB2100STE	12		Socket	\$834.40	TB2300SE	1
	Flanged	\$230.70	TB2100FE	6		Flanged	\$1,259.35	TB2300FE	1
1-1/4"	Skt/Thd*	\$174.55	TB2125STE	6	4"	Threaded	\$1,431.40	TB2400TE	1
	Flanged	\$356.75	TB2125FE	6		Socket	\$1,431.40	TB2400SE	1
1-1/2"	Skt/Thd*	\$207.95	TB2150STE	6		Flanged	\$2,314.95	TB2400FE	1
	Flanged	\$417.35	TB2150FE	6	**6"	Flanged	\$3,129.00	TB2600FE	1
2"	Skt/Thd*	\$286.80	TB2200STE	1	* 1/2" - 2" valves are supplied with socket and threaded end connectors. ** 4" valve venturied to 6"				
	Flanged	\$573.75	TB2200FE	1					

NEW
MATERIAL

GFPP FPM O-RINGS

Price Code A

SIZE	END CONN.	PRICE	PART NO.	CTN. QTY.
1/2"	Threaded*	\$99.75	TB4P050T	12
3/4"	Threaded*	\$121.15	TB4P075T	12
1"	Threaded*	\$141.75	TB4P100T	12
1-1/4"	Threaded*	\$209.90	TB4P125T	6
1-1/2"	Threaded*	\$240.05	TB4P150T	6
2"	Threaded*	\$325.90	TB4P200T	1

* GFPP true union ball valves have THREADED end connections only.

GFPP EPDM O-RINGS

Price Code A

SIZE	END CONN.	PRICE	PART NO.	CTN. QTY.
1/2"	Skt/Thd*	\$86.30	TB4P050TE	12
3/4"	Skt/Thd*	\$105.10	TB4P075TE	12
1"	Skt/Thd*	\$128.95	TB4P100TE	12
1-1/4"	Skt/Thd*	\$181.65	TB4P125TE	6
1-1/2"	Skt/Thd*	\$214.00	TB4P150TE	6
2"	Skt/Thd*	\$285.55	TB4P200TE	1

* GFPP true union ball valves have THREADED end connections only.



TBZ SERIES "Z-BALL" TRUE UNION BALL VALVES

Drilled ball and FPM o-rings ONLY for use with Sodium Hypochlorite specifically. For other vented applications, consult factory.

PVC FPM O-RINGS

Price Code A

SIZE	END CONN.	PRICE	PART NO.	CTN. QTY.	SIZE	END CONN.	PRICE	PART NO.	CTN. QTY.
1/2"	Skt/Thd*	\$106.10	TB1050STZ	12	2"	Skt/Thd*	\$238.35	TB1200STZ	1
	Flanged	\$157.15	TB1050FZ	12		Flanged	\$450.05	TB1200FZ	1
3/4"	Skt/Thd*	\$117.70	TB1075STZ	12	2-1/2"	Threaded	\$538.80	TB1250TZ	1
	Flanged	\$180.25	TB1075FZ	12		Socket	\$538.80	TB1250SZ	1
1"	Skt/Thd*	\$133.90	TB1100STZ	12		Flanged	\$768.65	TB1250FZ	1
	Flanged	\$232.10	TB1100FZ	6	3"	Threaded	\$554.50	TB1300TZ	1
1-1/4"	Skt/Thd*	\$164.05	TB1125STZ	6		Socket	\$554.50	TB1300SZ	1
	Flanged	\$358.80	TB1125FZ	6		Flanged	\$1,009.40	TB1300FZ	1
1-1/2"	Skt/Thd*	\$191.85	TB1150STZ	6	4"	Threaded	\$887.55	TB1400TZ	1
	Flanged	\$382.10	TB1150FZ	6		Socket	\$887.55	TB1400SZ	1
						Flanged	\$1,548.60	TB1400FZ	1
					**6"	Flanged	\$2,100.20	TB1600FZ	1

* 1/2" - 2" valves are supplied with socket and threaded end connectors.

** 4" valve venturied to 6"

* 1/2" - 2" valves are supplied with socket and threaded end connectors.

** 4" valve venturied to 6"

CPVC FPM O-RINGS

Price Code A

SIZE	END CONN.	PRICE	PART NO.	CTN. QTY.	SIZE	END CONN.	PRICE	PART NO.	CTN. QTY.
1/2"	Skt/Thd*	\$128.45	TB2050STZ	12	2"	Skt/Thd*	\$343.20	TB2200STZ	1
	Flanged	\$188.35	TB2050FZ	12		Flanged	\$690.65	TB2200FZ	1
3/4"	Skt/Thd*	\$149.70	TB2075STZ	12	2-1/2"	Threaded	\$931.55	TB2250TZ	1
	Flanged	\$210.45	TB2075FZ	12		Socket	\$931.55	TB2250SZ	1
1"	Skt/Thd*	\$173.95	TB2100STZ	12		Flanged	\$1,094.25	TB2250FZ	1
	Flanged	\$290.00	TB2100FZ	6	3"	Threaded	\$958.35	TB2300TZ	1
1-1/4"	Skt/Thd*	\$224.85	TB2125STZ	6		Socket	\$958.35	TB2300SZ	1
	Flanged	\$448.20	TB2125FZ	6		Flanged	\$1,537.40	TB2300FZ	1
1-1/2"	Skt/Thd*	\$261.15	TB2150STZ	6	4"	Threaded	\$1,593.75	TB2400TZ	1
	Flanged	\$492.20	TB2150FZ	6		Socket	\$1,593.75	TB2400SZ	1
						Flanged	\$2,496.00	TB2400FZ	1
					**6"	Flanged	\$3,519.70	TB2600FZ	1
* 1/2" - 2" valves are supplied with socket and threaded end connectors.									
** 4" valve venturied to 6"									

* 1/2" - 2" valves are supplied with socket and threaded end connectors.

** 4" valve venturied to 6"



CV SERIES PROFILE2™ PROPORTIONAL CONTROL TRUE UNION BALL VALVES

Provides two linear flow curves – one for fast opening, one for slow opening.
For Actuator-ready, see Price List ACT-05.

PVC FPM O-RINGS

PVC EPDM O-RINGS

Price Code C

SIZE	END CONN.	PRICE	PART NO.	SIZE	END CONN.	PRICE	PART NO.
1/2"	Skt/Thd*	\$117.55	CV1050STV	1/2"	Skt/Thd*	\$112.95	CV1050STE
	Flanged	\$182.45	CV1050FV		Flanged	\$176.35	CV1050FE
3/4"	Skt/Thd*	\$117.55	CV1075STV	3/4"	Skt/Thd*	\$112.95	CV1075STE
	Flanged	\$182.45	CV1075FV		Flanged	\$176.35	CV1075FE
1"	Skt/Thd*	\$117.55	CV1100STV	1"	Skt/Thd*	\$112.95	CV1100STE
	Flanged	\$182.45	CV1100FV		Flanged	\$176.35	CV1100FE
2"	Skt/Thd*	\$188.65	CV1200STV	2"	Skt/Thd*	\$174.80	CV1200STE
	Flanged	\$317.00	CV1200FV		Flanged	\$309.25	CV1200FE
3"	Threaded	\$343.45	CV1300TV	3"	Threaded	\$310.80	CV1300TE
	Socket	\$343.45	CV1300SV		Socket	\$310.80	CV1300SE
	Flanged	\$535.85	CV1300FV		Flanged	\$504.50	CV1300FE
4"	Threaded	\$516.85	CV1400TV	4"	Threaded	\$475.00	CV1400TE
	Socket	\$516.85	CV1400SV		Socket	\$475.00	CV1400SE
	Flanged	\$901.10	CV1400FV		Flanged	\$862.35	CV1400FE
**6"	Flanged	\$1,158.55	CV1600FV	**6"	Flanged	\$1,118.40	CV1600FE

* 1/2" - 2" valves are supplied with both socket & threaded end connections.

**4" valve venturied to 6".

Profile2™ is a trademark of Hayward Industries, Inc.

CPVC FPM O-RINGS

CPVC EPDM O-RINGS

Price Code C

SIZE	END CONN.	PRICE	PART NO.	SIZE	END CONN.	PRICE	PART NO.
1/2"	Skt/Thd*	\$135.05	CV2050STV	1/2"	Skt/Thd*	\$130.60	CV2050STE
	Flanged	\$197.30	CV2050FV		Flanged	\$192.80	CV2050FE
3/4"	Skt/Thd*	\$135.05	CV2075STV	3/4"	Skt/Thd*	\$130.60	CV2075STE
	Flanged	\$197.30	CV2075FV		Flanged	\$192.80	CV2075FE
1"	Skt/Thd*	\$135.05	CV2100STV	1"	Skt/Thd*	\$130.60	CV2100STE
	Flanged	\$197.30	CV2100FV		Flanged	\$192.80	CV2100FE
2"	Skt/Thd*	\$235.25	CV2200STV	2"	Skt/Thd*	\$224.65	CV2200STE
	Flanged	\$359.95	CV2200FV		Flanged	\$350.60	CV2200FE
3"	Threaded	\$521.65	CV2300TV	3"	Threaded	\$490.55	CV2300TE
	Socket	\$521.65	CV2300SV		Socket	\$490.55	CV2300SE
	Flanged	\$713.60	CV2300FV		Flanged	\$681.00	CV2300FE
4"	Threaded	\$826.30	CV2400TV	4"	Threaded	\$786.60	CV2400TE
	Socket	\$826.30	CV2400SV		Socket	\$786.60	CV2400SE
	Flanged	\$1,210.25	CV2400FV		Flanged	\$1,168.30	CV2400FE
**6"	Flanged	\$1,464.75	CV2600FV	**6"	Flanged	\$1,423.55	CV2600FE

* 1/2" - 2" valves are supplied with both socket & threaded end connections.

**4" valve venturied to 6".

Profile2™ is a trademark of Hayward Industries, Inc.



BALL VALVE OPTIONS

Option prices are ADDED to the list price of the valve.

Price Code C

SIZE	PRICE	PART NO.
Valve Handle Lock-Outs - Cover Style		
1/2" - 2"	\$59.05	LO1
2-1/2" - 6"	\$160.70	LO2
2" Square Operating Nut		
1/2" - 3/4"	\$135.50	SQNUT5TU
1" - 2"	\$135.50	SQNUT2TU
2-1/2" - 6"	\$135.50	SQNUTTB3
Seal Retainer Wrench*		
1/2" - 2"	\$31.55	STLTBSRW

Price Code C

SIZE	PRICE	PART NO.
Valve Tags		
316 SSSL	\$34.40	YSS2
Paper	\$8.90	YPT1

STEM EXTENSION PART NUMBER MATRIX

Price Code C

Stem Extensions**	
6" - 36"	\$162.25
37" - 96"	\$229.00

UNSUPPORTED		
SIZE	HANDLE	HANDLE
	Min. Length (in.)	Max. Length (in.)
1/2"	SPGTU15X12EXT	SPGTU15X96EXT
3/4"	SPGTU15X12EXT	SPGTU15X96EXT
1"	SPGTU12X12EXT	SPGTU12X96EXT
1-1/4"	SPGTU12X12EXT	SPGTU12X96EXT
1-1/2"	SPGTU12X12EXT	SPGTU12X96EXT
2"	SPGTU12X12EXT	SPGTU12X96EXT
2-1/2"	SPGTB14X12EXT	SPGTB14X96EXT
3"	SPGTB14X12EXT	SPGTB14X96EXT
4"	SPGTB14X12EXT	SPGTB14X96EXT
6"	SPGTB14X12EXT	SPGTB14X96EXT

* 2-1/2" & up valves have integral tabs on the handle for Seal Retainer adjustment.

** See part number matrix table on right for part numbers.



Price Code A

Valve-Safe Lockouts - Trigger Style		SUFFIX
1/2" - 2"	\$8.30	G
2-1/2" - 6"	\$12.50	G
Drilled Ball - not for Sodium Hypochlorite		
1/2" - 2"	\$42.65	D
2-1/2" - 6"	\$71.00	D



TW SERIES TRUE UNION THREE-WAY BALL VALVES

All Three-Way Ball Valves are assembled with silicone free lubricant and have PTFE seats.
For Actuator-ready, see Price List ACT-05.

PVC FPM O-RINGS

Price Code B

SIZE	END CONN.	PRICE	PART NO.	CTN. QTY.	SIZE	END CONN.	PRICE	PART NO.	CTN. QTY.
1/2"	Skt/Thd*	\$102.65	TW1050ST	24	2-1/2"	Threaded	\$745.60	TW1250T	1
	Flanged	\$180.60	TW1050F	12		Socket	\$745.60	TW1250S	1
3/4"	Skt/Thd*	\$117.00	TW1075ST	12		Flanged	\$1,189.25	TW1250F	1
	Flanged	\$193.70	TW1075F	12	3"	Threaded	\$745.60	TW1300T	1
1"	Skt/Thd*	\$125.75	TW1100ST	12		Socket	\$745.60	TW1300S	1
	Flanged	\$211.05	TW1100F	6		Flanged	\$1,189.25	TW1300F	1
1-1/4"	Skt/Thd*	\$187.80	TW1125ST	6	4"	Threaded	\$1,467.85	TW1400T	1
	Flanged	\$361.30	TW1125F	6		Socket	\$1,467.85	TW1400S	1
1-1/2"	Skt/Thd*	\$254.35	TW1150ST	6		Flanged	\$2,185.80	TW1400F	1
	Flanged	\$391.65	TW1150F	6	**6"	Flanged	\$3,091.90	TW1600F	1
2"	Skt/Thd*	\$339.60	TW1200ST	1	* 1/2" - 2" valves are supplied with socket and threaded end connectors. ** 4" valve venturied to 6"				
	Flanged	\$549.15	TW1200F	1					

PVC EPDM O-RINGS

Price Code B

SIZE	END CONN.	PRICE	PART NO.	CTN. QTY.	SIZE	END CONN.	PRICE	PART NO.	CTN. QTY.
1/2"	Skt/Thd*	\$98.20	TW1050STE	24	2-1/2"	Threaded	\$738.35	TW1250TE	1
	Flanged	\$171.95	TW1050FE	12		Socket	\$738.35	TW1250SE	1
3/4"	Skt/Thd*	\$111.30	TW1075STE	12		Flanged	\$1,177.55	TW1250FE	1
	Flanged	\$182.10	TW1075FE	12	3"	Threaded	\$738.35	TW1300TE	1
1"	Skt/Thd*	\$119.90	TW1100STE	12		Socket	\$738.35	TW1300SE	1
	Flanged	\$200.85	TW1100FE	6		Flanged	\$1,177.55	TW1300FE	1
1-1/4"	Skt/Thd*	\$179.20	TW1125STE	6	4"	Threaded	\$1,453.30	TW1400TE	1
	Flanged	\$343.90	TW1125FE	6		Socket	\$1,453.30	TW1400SE	1
1-1/2"	Skt/Thd*	\$241.35	TW1150STE	6		Flanged	\$2,163.90	TW1400FE	1
	Flanged	\$371.40	TW1150FE	6	**6"	Flanged	\$3,061.35	TW1600FE	1
2"	Skt/Thd*	\$322.30	TW1200STE	1	* 1/2" - 2" valves are supplied with socket and threaded end connectors. ** 4" valve venturied to 6"				
	Flanged	\$521.65	TW1200FE	1					



TW SERIES TRUE UNION THREE-WAY BALL VALVES

All Three-Way Ball Valves are assembled with silicone free lubricant and have PTFE seats.
For Actuator-ready, see Price List ACT-05.

CPVC FPM O-RINGS

Price Code B

SIZE	END CONN.	PRICE	PART NO.	CTN. QTY.	SIZE	END CONN.	PRICE	PART NO.	CTN. QTY.
1/2"	Skt/Thd*	\$154.55	TW2050ST	24	2-1/2"	Threaded	\$1,119.15	TW2250T	1
	Flanged	\$268.10	TW2050F	12		Socket	\$1,119.15	TW2250S	1
3/4"	Skt/Thd*	\$174.50	TW2075ST	12		Flanged	\$1,782.80	TW2250F	1
	Flanged	\$289.35	TW2075F	12	3"	Threaded	\$1,119.15	TW2300T	1
1"	Skt/Thd*	\$187.25	TW2100ST	12		Socket	\$1,119.15	TW2300S	1
	Flanged	\$313.55	TW2100F	6		Flanged	\$1,782.80	TW2300F	1
1-1/4"	Skt/Thd*	\$279.45	TW2125ST	6	4"	Threaded	\$2,332.25	TW2400T	1
	Flanged	\$536.10	TW2125F	6		Socket	\$2,332.25	TW2400S	1
1-1/2"	Skt/Thd*	\$377.30	TW2150ST	6		Flanged	\$3,277.90	TW2400F	1
	Flanged	\$581.55	TW2150F	6	**6"	Flanged	\$4,635.55	TW2600F	1
2"	Skt/Thd*	\$504.95	TW2200ST	1	* 1/2" - 2" valves are supplied with socket and threaded end connectors.				
	Flanged	\$815.60	TW2200F	1	** 4" valve venturied to 6"				

CPVC EPDM O-RINGS

Price Code B

SIZE	END CONN.	PRICE	PART NO.	CTN. QTY.	SIZE	END CONN.	PRICE	PART NO.	CTN. QTY.
1/2"	Skt/Thd*	\$147.50	TW2050STE	24	2-1/2"	Threaded	\$1,107.60	TW2250TE	1
	Flanged	\$255.35	TW2050FE	12		Socket	\$1,107.60	TW2250SE	1
3/4"	Skt/Thd*	\$165.90	TW2075STE	12		Flanged	\$1,765.40	TW2250FE	1
	Flanged	\$275.10	TW2075FE	12	3"	Threaded	\$1,107.60	TW2300TE	1
1"	Skt/Thd*	\$178.70	TW2100STE	12		Socket	\$1,107.60	TW2300SE	1
	Flanged	\$297.80	TW2100FE	6		Flanged	\$1,765.40	TW2300FE	1
1-1/4"	Skt/Thd*	\$266.60	TW2125STE	6	4"	Threaded	\$2,309.15	TW2400TE	1
	Flanged	\$509.20	TW2125FE	6		Socket	\$2,309.15	TW2400SE	1
1-1/2"	Skt/Thd*	\$358.85	TW2150STE	6		Flanged	\$3,244.55	TW2400FE	1
	Flanged	\$553.15	TW2150FE	6	**6"	Flanged	\$4,589.35	TW2600FE	1
2"	Skt/Thd*	\$479.40	TW2200STE	1	* 1/2" - 2" valves are supplied with socket and threaded end connectors.				
	Flanged	\$775.80	TW2200FE	1	** 4" valve venturied to 6"				



CF SERIES CROSS-FLOW 3-WAY BALL VALVE

All Three-Way Ball Valves are assembled with silicone free lubricant and have PTFE seats.

PVC FPM O-RINGS

Price Code B

SIZE	END CONN.	PRICE	PART NO.	CTN. QTY.	SIZE	END CONN.	PRICE	PART NO.	CTN. QTY.
1/2"	Skt/Thd*	\$259.80	CF1050ST	24	2-1/2"	Threaded	\$1,084.15	CF1250T	1
	Flanged	\$337.75	CF1050F	12		Socket	\$1,084.15	CF1250S	1
3/4"	Skt/Thd*	\$293.30	CF1075ST	12		Flanged	\$1,527.80	CF1250F	1
	Flanged	\$370.00	CF1075F	12	3"	Threaded	\$1,084.15	CF1300T	1
1"	Skt/Thd*	\$343.45	CF1100ST	12		Socket	\$1,084.15	CF1300S	1
	Flanged	\$428.75	CF1100F	6		Flanged	\$1,527.80	CF1300F	1
1-1/4"	Skt/Thd*	\$461.55	CF1125ST	6	4"	Threaded	\$2,097.70	CF1400T	1
	Flanged	\$635.05	CF1125F	6		Socket	\$2,097.70	CF1400S	1
1-1/2"	Skt/Thd*	\$528.10	CF1150ST	6		Flanged	\$2,815.65	CF1400F	1
	Flanged	\$665.40	CF1150F	6	**6"	Flanged	\$3,721.75	CF1600F	1
2"	Skt/Thd*	\$613.35	CF1200ST	1	* 1/2" - 2" valves are supplied with socket and threaded end connectors. ** 4" valve venturied to 6"				
	Flanged	\$822.90	CF1200F	1					

PVC EPDM O-RINGS

Price Code B

SIZE	END CONN.	PRICE	PART NO.	CTN. QTY.	SIZE	END CONN.	PRICE	PART NO.	CTN. QTY.
1/2"	Skt/Thd*	\$255.35	CF1050STE	24	2-1/2"	Threaded	\$1,076.90	CF1250TE	1
	Flanged	\$329.10	CF1050FE	12		Socket	\$1,076.90	CF1250SE	1
3/4"	Skt/Thd*	\$287.60	CF1075STE	12		Flanged	\$1,516.10	CF1250FE	1
	Flanged	\$358.40	CF1075FE	12	3"	Threaded	\$1,076.90	CF1300TE	1
1"	Skt/Thd*	\$337.60	CF1100STE	12		Socket	\$1,076.90	CF1300SE	1
	Flanged	\$418.55	CF1100FE	6		Flanged	\$1,516.10	CF1300FE	1
1-1/4"	Skt/Thd*	\$452.95	CF1125STE	6	4"	Threaded	\$2,083.15	CF1400TE	1
	Flanged	\$617.65	CF1125FE	6		Socket	\$2,083.15	CF1400SE	1
1-1/2"	Skt/Thd*	\$515.10	CF1150STE	6		Flanged	\$2,793.75	CF1400FE	1
	Flanged	\$645.15	CF1150FE	6	**6"	Flanged	\$3,691.20	CF1600FE	1
2"	Skt/Thd*	\$596.05	CF1200STE	1	* 1/2" - 2" valves are supplied with socket and threaded end connectors. ** 4" valve venturied to 6"				
	Flanged	\$795.40	CF1200FE	1					



CF SERIES CROSS-FLOW 3-WAY BALL VALVE

All Three-Way Ball Valves are assembled with silicone free lubricant and have PTFE seats.

BALL VALVES

CPVC FPM O-RINGS

Price Code B

SIZE	END CONN.	PRICE	PART NO.	CTN. QTY.	SIZE	END CONN.	PRICE	PART NO.	CTN. QTY.
1/2"	Skt/Thd*	\$338.95	CF2050ST	24	2-1/2"	Threaded	\$1,579.55	CF2250T	1
	Flanged	\$452.50	CF2050F	12		Socket	\$1,579.55	CF2250S	1
3/4"	Skt/Thd*	\$387.55	CF2075ST	12		Flanged	\$2,243.20	CF2250F	1
	Flanged	\$502.40	CF2075F	12	3"	Threaded	\$1,579.55	CF2300T	1
1"	Skt/Thd*	\$462.45	CF2100ST	12		Socket	\$1,579.55	CF2300S	1
	Flanged	\$588.75	CF2100F	6		Flanged	\$2,243.20	CF2300F	1
1-1/4"	Skt/Thd*	\$639.70	CF2125ST	6	4"	Threaded	\$3,234.40	CF2400T	1
	Flanged	\$941.80	CF2125F	6		Socket	\$3,234.40	CF2400S	1
1-1/2"	Skt/Thd*	\$737.55	CF2150ST	6		Flanged	\$4,180.05	CF2400F	1
	Flanged	\$941.80	CF2150F	6	**6"	Flanged	\$5,537.70	CF2600F	1
2"	Skt/Thd*	\$865.20	CF2200ST	1	* 1/2" - 2" valves are supplied with socket and threaded end connectors. ** 4" valve venturied to 6"				
	Flanged	\$1,175.85	CF2200F	1					

CPVC EPDM O-RINGS

Price Code B

SIZE	END CONN.	PRICE	PART NO.	CTN. QTY.	SIZE	END CONN.	PRICE	PART NO.	CTN. QTY.
1/2"	Skt/Thd*	\$331.90	CF2050STE	24	2-1/2"	Threaded	\$1,568.00	CF2250TE	1
	Flanged	\$439.75	CF2050FE	12		Socket	\$1,568.00	CF2250SE	1
3/4"	Skt/Thd*	\$378.95	CF2075STE	12		Flanged	\$2,225.80	CF2250FE	1
	Flanged	\$488.15	CF2075FE	12	3"	Threaded	\$1,568.00	CF2300TE	1
1"	Skt/Thd*	\$453.90	CF2100STE	12		Socket	\$1,568.00	CF2300SE	1
	Flanged	\$573.00	CF2100FE	6		Flanged	\$2,225.80	CF2300FE	1
1-1/4"	Skt/Thd*	\$626.85	CF2125STE	6	4"	Threaded	\$3,211.30	CF2400TE	1
	Flanged	\$869.45	CF2125FE	6		Socket	\$3,211.30	CF2400SE	1
1-1/2"	Skt/Thd*	\$719.10	CF2150STE	6		Flanged	\$4,146.70	CF2400FE	1
	Flanged	\$913.40	CF2150FE	6	**6"	Flanged	\$5,491.50	CF2600FE	1
2"	Skt/Thd*	\$839.65	CF2200STE	1	* 1/2" - 2" valves are supplied with socket and threaded end connectors. ** 4" valve venturied to 6"				
	Flanged	\$1,136.05	CF2200FE	1					



LA SERIES LATERAL THREE-WAY TRUE UNION BALL VALVES

All Lateral Three-Way Ball Valves are assembled with silicone free lubricant and have PTFE seats.

For Actuator-ready, see Price List ACT-05.

PVC FPM O-RINGS

Price Code B

SIZE	END CONN.	PRICE	PART NO.	CTN. QTY.	SIZE	END CONN.	PRICE	PART NO.	CTN. QTY.
1/2"	Skt/Thd*	\$105.45	LA1050ST	24	2-1/2"	Threaded	\$761.70	LA1250T	1
	Flanged	\$185.00	LA1050F	12		Socket	\$761.70	LA1250S	1
3/4"	Skt/Thd*	\$119.90	LA1075ST	12		Flanged	\$1,214.00	LA1250F	1
	Flanged	\$197.95	LA1075F	12	3"	Threaded	\$761.70	LA1300T	1
1"	Skt/Thd*	\$128.60	LA1100ST	12		Socket	\$761.70	LA1300S	1
	Flanged	\$215.30	LA1100F	6		Flanged	\$1,214.00	LA1300F	1
1-1/4"	Skt/Thd*	\$192.15	LA1125ST	6	4"	Threaded	\$1,498.55	LA1400T	1
	Flanged	\$368.55	LA1125F	6		Socket	\$1,498.55	LA1400S	1
1-1/2"	Skt/Thd*	\$260.15	LA1150ST	6		Flanged	\$2,229.55	LA1400F	1
	Flanged	\$400.25	LA1150F	6	**6"	Flanged	\$3,154.80	LA1600F	1
2"	Skt/Thd*	\$346.80	LA1200ST	1	* 1/2" - 2" valves are supplied with socket and threaded end connectors. ** 4" valve venturied to 6"				
	Flanged	\$560.70	LA1200F	1					

PVC EPDM O-RINGS

Price Code B

SIZE	END CONN.	PRICE	PART NO.	CTN. QTY.	SIZE	END CONN.	PRICE	PART NO.	CTN. QTY.
1/2"	Skt/Thd*	\$101.10	LA1050STE	24	2-1/2"	Threaded	\$754.35	LA1250TE	1
	Flanged	\$176.35	LA1050FE	12		Socket	\$754.35	LA1250SE	1
3/4"	Skt/Thd*	\$114.20	LA1075STE	12		Flanged	\$1,202.35	LA1250FE	1
	Flanged	\$186.45	LA1075FE	12	3"	Threaded	\$754.35	LA1300TE	1
1"	Skt/Thd*	\$122.90	LA1100STE	12		Socket	\$754.35	LA1300SE	1
	Flanged	\$205.25	LA1100FE	6		Flanged	\$1,202.35	LA1300FE	1
1-1/4"	Skt/Thd*	\$183.55	LA1125STE	6	4"	Threaded	\$1,482.50	LA1400TE	1
	Flanged	\$351.15	LA1125FE	6		Socket	\$1,482.50	LA1400SE	1
1-1/2"	Skt/Thd*	\$247.05	LA1150STE	6		Flanged	\$2,207.70	LA1400FE	1
	Flanged	\$380.10	LA1150FE	6	**6"	Flanged	\$3,122.60	LA1600FE	1
2"	Skt/Thd*	\$329.45	LA1200STE	1	* 1/2" - 2" valves are supplied with socket and threaded end connectors. ** 4" valve venturied to 6"				
	Flanged	\$533.25	LA1200FE	1					



LA SERIES LATERAL THREE-WAY TRUE UNION BALL VALVES

All Lateral Three-Way Ball Valves are assembled with silicone free lubricant and have PTFE seats.

For Actuator-ready, see Price List ACT-05.

CPVC FPM O-RINGS

Price Code B

SIZE	END CONN.	PRICE	PART NO.	CTN. QTY.	SIZE	END CONN.	PRICE	PART NO.	CTN. QTY.
1/2"	Skt/Thd*	\$158.90	LA2050ST	24	2-1/2"	Threaded	\$1,142.30	LA2250T	1
	Flanged	\$273.75	LA2050F	12		Socket	\$1,142.30	LA2250S	1
3/4"	Skt/Thd*	\$178.70	LA2075ST	12		Flanged	\$1,818.90	LA2250F	1
	Flanged	\$296.45	LA2075F	12	3"	Threaded	\$1,142.30	LA2300T	1
1"	Skt/Thd*	\$191.50	LA2100ST	12		Socket	\$1,142.30	LA2300S	1
	Flanged	\$320.55	LA2100F	6		Flanged	\$1,818.90	LA2300F	1
1-1/4"	Skt/Thd*	\$285.10	LA2125ST	6	4"	Threaded	\$2,380.00	LA2400T	1
	Flanged	\$547.55	LA2125F	6		Socket	\$2,380.00	LA2400S	1
1-1/2"	Skt/Thd*	\$385.75	LA2150ST	6		Flanged	\$3,344.40	LA2400F	1
	Flanged	\$594.25	LA2150F	6	**6"	Flanged	\$4,729.55	LA2600F	1
2"	Skt/Thd*	\$516.25	LA2200ST	1	* 1/2" - 2" valves are supplied with socket and threaded end connectors. ** 4" valve venturied to 6"				
	Flanged	\$832.55	LA2200F	1					

CPVC EPDM O-RINGS

Price Code B

SIZE	END CONN.	PRICE	PART NO.	CTN. QTY.	SIZE	END CONN.	PRICE	PART NO.	CTN. QTY.
1/2"	Skt/Thd*	\$151.70	LA2050STE	24	2-1/2"	Threaded	\$1,130.70	LA2250TE	1
	Flanged	\$261.00	LA2050FE	12		Socket	\$1,130.70	LA2250SE	1
3/4"	Skt/Thd*	\$170.25	LA2075STE	12		Flanged	\$1,801.65	LA2250FE	1
	Flanged	\$280.85	LA2075FE	12	3"	Threaded	\$1,130.70	LA2300TE	1
1"	Skt/Thd*	\$183.00	LA2100STE	12		Socket	\$1,130.70	LA2300SE	1
	Flanged	\$304.95	LA2100FE	6		Flanged	\$1,801.65	LA2300FE	1
1-1/4"	Skt/Thd*	\$272.30	LA2125STE	6	4"	Threaded	\$2,355.35	LA2400TE	1
	Flanged	\$520.50	LA2125FE	6		Socket	\$2,355.35	LA2400SE	1
1-1/2"	Skt/Thd*	\$367.35	LA2150STE	6		Flanged	\$3,309.65	LA2400FE	1
	Flanged	\$564.45	LA2150FE	6	**6"	Flanged	\$4,681.80	LA2600FE	1
2"	Skt/Thd*	\$489.30	LA2200STE	1	* 1/2" - 2" valves are supplied with socket and threaded end connectors. ** 4" valve venturied to 6"				
	Flanged	\$791.45	LA2200FE	1					



QIC2™ BALL VALVES

All QIC2™ Ball Valves have EPDM o-rings and PTFE seats.

PVC EPDM O-RINGS

Price Code A

SIZE	END CONN.	PRICE	PART NO.	CTN. QTY.	SIZE	END CONN.	PRICE	PART NO.	CTN. QTY.
1/2"	Threaded	\$30.20	QV1T050TE	24	1-1/4"	Threaded	\$81.25	QV1T125TE	6
	Socket	\$30.20	QV1T050SE	12		Socket	\$81.25	QV1T125SE	6
3/4"	Threaded	\$38.85	QV1T075TE	12	1-1/2"	Threaded	\$81.25	QV1T150TE	6
	Socket	\$38.85	QV1T075SE	12		Socket	\$81.25	QV1T150SE	6
1"	Threaded	\$46.00	QV1T100TE	12	2"	Threaded	\$106.00	QV1T200TE	1
	Socket	\$46.00	QV1T100SE	6		Socket	\$106.00	QV1T200SE	1

QIC2™ is a trademark of Hayward Industries, Inc.



TC SERIES TRUE UNION BALL CHECK VALVES

All Ball Check Valves are assembled with silicone free lubricant.

PVC FPM SEATS & O-RINGS

Price Code A

SIZE	END CONN.	PRICE	PART NO.	CTN. QTY.	SIZE	END CONN.	PRICE	PART NO.	CTN. QTY.
1/4"•	Threaded	\$68.00	TC10025T	12	2"	Skt/Thd*	\$244.45	TC10200ST	1
	Socket	\$68.00	TC10025S	12		Flanged	\$471.90	TC10200F	1
3/8"•	Threaded	\$68.00	TC10037T	12	2-1/2"	Threaded	\$556.00	TC1250T	1
	Socket	\$68.00	TC10037S	12		Socket	\$556.00	TC1250S	1
1/2"	Skt/Thd*	\$77.35	TC10050ST	12		Flanged	\$951.40	TC1250F	1
	Flanged	\$187.20	TC10050F	12	3"	Threaded	\$570.15	TC1300T	1
3/4"	Skt/Thd*	\$86.60	TC10075ST	12		Socket	\$570.15	TC1300S	1
	Flanged	\$213.40	TC10075F	12		Flanged	\$1,154.15	TC1300F	1
1"	Skt/Thd*	\$110.05	TC10100ST	12	4"	Threaded	\$1,122.90	TC1400T	1
	Flanged	\$273.75	TC10100F	6		Socket	\$1,122.90	TC1400S	1
1-1/4"	Skt/Thd*	\$182.45	TC10125ST	6		Flanged	\$1,781.60	TC1400F	1
	Flanged	\$454.85	TC10125F	6	**6"	Flanged	\$2,404.80	TC1600F	1
1-1/2"	Skt/Thd*	\$182.45	TC10150ST	6	*1/2" - 2" valves are supplied with socket and threaded end connectors. ** 4" valve venturied to 6" • Trim check design only				
	Flanged	\$509.05	TC10150F	6					

*1/2" - 2" valves are supplied with socket and threaded end connectors.

** 4" valve venturied to 6"

• Trim check design only

PVC EPDM SEATS & O-RINGS

Price Code A

SIZE	END CONN.	PRICE	PART NO.	CTN. QTY.	SIZE	END CONN.	PRICE	PART NO.	CTN. QTY.
1/2"	Skt/Thd*	\$68.00	TC10050STE	12	2-1/2"	Threaded	\$523.05	TC1250TE	1
	Flanged	\$140.75	TC10050FE	12		Socket	\$523.05	TC1250SE	1
3/4"	Skt/Thd*	\$77.35	TC10075STE	12		Flanged	\$871.85	TC1250FE	1
	Flanged	\$167.00	TC10075FE	12	3"	Threaded	\$538.80	TC1300TE	1
1"	Skt/Thd*	\$97.65	TC10100STE	12		Socket	\$538.80	TC1300SE	1
	Flanged	\$216.50	TC10100FE	6		Flanged	\$1,096.50	TC1300FE	1
1-1/4"	Skt/Thd*	\$158.10	TC10125STE	6	4"	Threaded	\$1,082.65	TC1400TE	1
	Flanged	\$362.00	TC10125FE	6		Socket	\$1,082.65	TC1400SE	1
1-1/2"	Skt/Thd*	\$158.10	TC10150STE	6		Flanged	\$1,724.70	TC1400FE	1
	Flanged	\$400.65	TC10150FE	6	**6"	Flanged	\$2,327.35	TC1600FE	1
2"	Skt/Thd*	\$222.70	TC10200STE	1	*1/2" - 2" valves are supplied with socket and threaded end connectors. ** 4" valve venturied to 6"				
	Flanged	\$442.50	TC10200FE	1					

*1/2" - 2" valves are supplied with socket and threaded end connectors.

** 4" valve venturied to 6"



TC SERIES TRUE UNION BALL CHECK VALVES

All Ball Check Valves are assembled with silicone free lubricant.

CPVC FPM SEATS & O-RINGS

Price Code A

SIZE	END CONN.	PRICE	PART NO.	CTN. QTY.	SIZE	END CONN.	PRICE	PART NO.	CTN. QTY.
1/2"	Skt/Thd*	\$119.90	TC20050ST	12	2-1/2"	Threaded	\$993.30	TC2250T	1
	Flanged	\$232.25	TC20050F	12		Socket	\$993.30	TC2250S	1
3/4"	Skt/Thd*	\$141.15	TC20075ST	12		Flanged	\$1,322.95	TC2250F	1
	Flanged	\$268.70	TC20075F	12	3"	Threaded	\$1,024.50	TC2300T	1
1"	Skt/Thd*	\$169.95	TC20100ST	12		Socket	\$1,024.50	TC2300S	1
	Flanged	\$335.45	TC20100F	6		Flanged	\$1,817.55	TC2300F	1
1-1/4"	Skt/Thd*	\$294.50	TC20125ST	6	4"	Threaded	\$2,064.75	TC2400T	1
	Flanged	\$544.95	TC20125F	6		Socket	\$2,064.75	TC2400S	1
1-1/2"	Skt/Thd*	\$294.50	TC20150ST	6		Flanged	\$3,058.10	TC2400F	1
	Flanged	\$610.25	TC20150F	6	**6"	Flanged	\$4,126.60	TC2600F	1
2"	Skt/Thd*	\$393.25	TC20200ST	1	*1/2" - 2" valves are supplied with socket and threaded end connectors. ** 4" valve venturied to 6"				
	Flanged	\$804.95	TC20200F	1					

CHECK VALVES

CPVC EPDM SEATS & O-RINGS

Price Code A

SIZE	END CONN.	PRICE	PART NO.	CTN. QTY.	SIZE	END CONN.	PRICE	PART NO.	CTN. QTY.
1/2"	Skt/Thd*	\$109.30	TC20050STE	12	2-1/2"	Threaded	\$846.55	TC2250TE	1
	Flanged	\$186.75	TC20050FE	12		Socket	\$846.55	TC2250SE	1
3/4"	Skt/Thd*	\$126.05	TC20075STE	12		Flanged	\$1,294.05	TC2250FE	1
	Flanged	\$215.60	TC20075FE	12	3"	Threaded	\$846.55	TC2300TE	1
1"	Skt/Thd*	\$157.90	TC20100STE	12		Socket	\$846.55	TC2300SE	1
	Flanged	\$277.80	TC20100FE	6		Flanged	\$1,515.30	TC2300FE	1
1-1/4"	Skt/Thd*	\$268.70	TC20125STE	6	4"	Threaded	\$1,837.65	TC2400TE	1
	Flanged	\$519.10	TC20125FE	6		Socket	\$1,837.65	TC2400SE	1
1-1/2"	Skt/Thd*	\$268.70	TC20150STE	6		Flanged	\$2,722.70	TC2400FE	1
	Flanged	\$579.75	TC20150FE	6	**6"	Flanged	\$3,675.60	TC2600FE	1
2"	Skt/Thd*	\$355.25	TC20200STE	1	*1/2" - 2" valves are supplied with socket and threaded end connectors. ** 4" valve venturied to 6"				
	Flanged	\$712.10	TC20200FE	1					



Price Code A

PP FPM SEATS & O-RINGS

PP EPDM SEATS & O-RINGS

SIZE	END CONN.	PRICE	PART NO.	CTN. QTY.	SIZE	END CONN.	PRICE	PART NO.	CTN. QTY.
1/2"	Threaded	\$157.90	TC30050T	12	1/2"	Threaded	\$126.35	TC30050TE	12
3/4"	Threaded	\$190.60	TC30075T	12	3/4"	Threaded	\$152.50	TC30075TE	12
1"	Threaded	\$224.90	TC30100T	12	1"	Threaded	\$179.85	TC30100TE	12
1-1/2"	Threaded	\$375.40	TC30150T	6	1-1/2"	Threaded	\$300.25	TC30150TE	6
2"	Threaded	\$504.75	TC30200T	1	2"	Threaded	\$403.90	TC30200TE	1



BALL CHECK FOOT VALVE SCREENS

Used to convert True Union Ball Check Valves to foot valves. Nominal 3/16" Perf.

Price Code B

SIZE	PVC		CPVC		PP	
	PRICE	PART NO.	PRICE	PART NO.	PRICE	PART NO.
1/2"	\$41.40	FV10050SA	\$56.90	FV20050SA	\$55.85	FVP0050SA
3/4"	\$50.45	FV10075SA	\$61.65	FV20075SA	\$64.30	FVP0075SA
1"	\$58.70	FV10100SA	\$69.80	FV20100SA	\$171.00	FVP0100SA
1-1/4" - 1-1/2"	\$87.45	FV10150SA	\$110.90	FV20150SA	\$176.05	FVP0150SA
2"	\$102.90	FV10200SA	\$124.50	FV20200SA	\$181.35	FVP0200SA
2-1/2" - 3"	\$143.70	FV10300SA	\$205.75	FV20300SA	-	NA
4"	\$174.20	FV10400SA	\$278.45	FV20400SA	-	NA



SW SERIES SWING CHECK VALVES

Swing Check Valves are assembled with silicone free lubricant and are furnished with two o-ring flange seals, so no additional gaskets are required for installation.

Price Code C

Price Code C

PVC with FPM SEALS			
SIZE	END CONN.	PRICE	PART NO.
3"	Flanged	\$987.10	SW1300V
4"	Flanged	\$1,342.10	SW1400V
6"	Flanged	\$1,968.25	SW1600V
8"	Flanged	\$2,713.65	SW1800V
PVC with FPM SEALS & Counterweight			
SIZE	END CONN.	PRICE	PART NO.
3"	Flanged	\$1,195.60	SW1300VC
4"	Flanged	\$1,549.85	SW1400VC
6"	Flanged	\$2,175.85	SW1600VC
8"	Flanged	\$2,919.90	SW1800VC
CPVC with FPM SEALS			
SIZE	END CONN.	PRICE	PART NO.
3"	Flanged	\$2,131.30	SW2300V
4"	Flanged	\$2,897.60	SW2400V
6"	Flanged	\$4,248.10	SW2600V
CPVC with FPM SEALS & Counterweight			
SIZE	END CONN.	PRICE	PART NO.
3"	Flanged	\$2,335.15	SW2300VC
4"	Flanged	\$3,100.00	SW2400VC
6"	Flanged	\$4,450.55	SW2600VC
GFPP* with FPM SEALS			
SIZE	END CONN.	PRICE	PART NO.
3"	Flanged	\$1,103.45	SW4300V
4"	Flanged	\$1,499.50	SW4400V
6"	Flanged	\$2,199.70	SW4600V
8"	Flanged	\$3,034.65	SW4800V

*GFPP valves with counterweight, consult factory.

PVC with EPDM SEALS			
SIZE	END CONN.	PRICE	PART NO.
3"	Flanged	\$785.20	SW1300E
4"	Flanged	\$1,046.75	SW1400E
6"	Flanged	\$1,546.90	SW1600E
8"	Flanged	\$2,206.85	SW1800E
PVC with EPDM SEALS & Counterweight			
SIZE	END CONN.	PRICE	PART NO.
3"	Flanged	\$992.15	SW1300EC
4"	Flanged	\$1,253.70	SW1400EC
6"	Flanged	\$1,753.05	SW1600EC
8"	Flanged	\$2,416.05	SW1800EC
CPVC with EPDM SEALS			
SIZE	END CONN.	PRICE	PART NO.
3"	Flanged	\$1,694.60	SW2300E
4"	Flanged	\$2,260.00	SW2400E
6"	Flanged	\$3,335.70	SW2600E
CPVC with EPDM SEALS & Counterweight			
SIZE	END CONN.	PRICE	PART NO.
3"	Flanged	\$1,892.75	SW2300EC
4"	Flanged	\$2,462.45	SW2400EC
6"	Flanged	\$3,541.05	SW2600EC
GFPP* with EPDM SEALS			
SIZE	END CONN.	PRICE	PART NO.
3"	Flanged	\$878.65	SW4300E
4"	Flanged	\$1,169.40	SW4400E
6"	Flanged	\$1,727.10	SW4600E
8"	Flanged	\$2,467.65	SW4800E



YC SERIES Y-CHECK VALVES

All Y-Check Valves are assembled with silicone free lubricant.

PVC FPM SEAT & SEALS

Price Code B

SIZE	END CONN.	PRICE	PART NO.	SIZE	END CONN.	PRICE	PART NO.
1/2"	Socket	\$101.35	YC10050S	2"	Socket	\$253.60	YC10200S
	Threaded	\$101.35	YC10050T		Threaded	\$253.60	YC10200T
	Flanged	\$133.00	YC10050F		Flanged	\$385.10	YC10200F
3/4"	Socket	\$109.80	YC10075S	2-1/2"	Socket	\$540.25	YC10250S
	Threaded	\$109.80	YC10075T		Threaded	\$540.25	YC10250T
	Flanged	\$146.95	YC10075F		Flanged	\$796.75	YC10250F
1"	Socket	\$119.00	YC10100S	3"	Socket	\$540.25	YC10300S
	Threaded	\$119.00	YC10100T		Threaded	\$540.25	YC10300T
	Flanged	\$176.35	YC10100F		Flanged	\$796.75	YC10300F
1-1/4"	Socket	\$187.20	YC10125S	4"	Socket	\$884.25	YC10400S
	Threaded	\$187.20	YC10125T		Threaded	\$884.25	YC10400T
	Flanged	\$270.60	YC10125F		Flanged	\$1,211.75	YC10400F
1-1/2"	Socket	\$204.20	YC10150S				
	Threaded	\$204.20	YC10150T				
	Flanged	\$286.05	YC10150F				

PVC EPDM SEAT & SEALS

Price Code B

SIZE	END CONN.	PRICE	PART NO.	SIZE	END CONN.	PRICE	PART NO.
1/2"	Socket	\$101.35	YC10050SE	2"	Socket	\$253.60	YC10200SE
	Threaded	\$101.35	YC10050TE		Threaded	\$253.60	YC10200TE
	Flanged	\$133.00	YC10050FE		Flanged	\$385.10	YC10200FE
3/4"	Socket	\$109.80	YC10075SE	2-1/2"	Socket	\$540.25	YC10250SE
	Threaded	\$109.80	YC10075TE		Threaded	\$540.25	YC10250TE
	Flanged	\$146.95	YC10075FE		Flanged	\$796.75	YC10250FE
1"	Socket	\$119.00	YC10100SE	3"	Socket	\$540.25	YC10300SE
	Threaded	\$119.00	YC10100TE		Threaded	\$540.25	YC10300TE
	Flanged	\$176.35	YC10100FE		Flanged	\$796.75	YC10300FE
1-1/4"	Socket	\$187.20	YC10125SE	4"	Socket	\$884.25	YC10400SE
	Threaded	\$187.20	YC10125TE		Threaded	\$884.25	YC10400TE
	Flanged	\$270.60	YC10125FE		Flanged	\$1,211.75	YC10400FE
1-1/2"	Socket	\$204.20	YC10150SE				
	Threaded	\$204.20	YC10150TE				
	Flanged	\$286.05	YC10150FE				



YC SERIES Y-CHECK VALVES (cont.)

All Y-Check Valves are assembled with silicone free lubricant.

CPVC FPM SEAT & SEALS

Price Code B

SIZE	END CONN.	PRICE	PART NO.	SIZE	END CONN.	PRICE	PART NO.
1/2"	Socket	\$229.45	YC20050S	2"	Socket	\$647.85	YC20200S
	Threaded	\$229.45	YC20050T		Threaded	\$647.85	YC20200T
	Flanged	\$273.90	YC20050F		Flanged	\$873.80	YC20200F
3/4"	Socket	\$253.55	YC20075S	2-1/2"	Socket	\$825.55	YC20250S
	Threaded	\$253.55	YC20075T		Threaded	\$825.55	YC20250T
	Flanged	\$288.55	YC20075F		Flanged	\$971.25	YC20250F
1"	Socket	\$324.65	YC20100S	3"	Socket	\$825.55	YC20300S
	Threaded	\$324.65	YC20100T		Threaded	\$825.55	YC20300T
	Flanged	\$381.90	YC20100F		Flanged	\$971.25	YC20300F
1-1/4"	Socket	\$504.10	YC20125S	4"	Socket	\$1,426.30	YC20400S
	Threaded	\$504.10	YC20125T		Threaded	\$1,426.30	YC20400T
	Flanged	\$593.05	YC20125F		Flanged	\$1,677.90	YC20400F
1-1/2"	Socket	\$504.10	YC20150S				
	Threaded	\$504.10	YC20150T				
	Flanged	\$593.05	YC20150F				

CPVC EPDM SEAT & SEALS

Price Code B

SIZE	END CONN.	PRICE	PART NO.	SIZE	END CONN.	PRICE	PART NO.
1/2"	Socket	\$229.45	YC20050SE	2"	Socket	\$647.85	YC20200SE
	Threaded	\$229.45	YC20050TE		Threaded	\$647.85	YC20200TE
	Flanged	\$273.90	YC20050FE		Flanged	\$873.80	YC20200FE
3/4"	Socket	\$253.55	YC20075SE	2-1/2"	Socket	\$825.55	YC20250SE
	Threaded	\$253.55	YC20075TE		Threaded	\$825.55	YC20250TE
	Flanged	\$288.55	YC20075FE		Flanged	\$971.25	YC20250FE
1"	Socket	\$324.65	YC20100SE	3"	Socket	\$825.55	YC20300SE
	Threaded	\$324.65	YC20100TE		Threaded	\$825.55	YC20300TE
	Flanged	\$381.90	YC20100FE		Flanged	\$971.25	YC20300FE
1-1/4"	Socket	\$504.10	YC20125SE	4"	Socket	\$1,426.30	YC20400SE
	Threaded	\$504.10	YC20125TE		Threaded	\$1,426.30	YC20400TE
	Flanged	\$593.05	YC20125FE		Flanged	\$1,677.90	YC20400FE
1-1/2"	Socket	\$504.10	YC20150SE				
	Threaded	\$504.10	YC20150TE				
	Flanged	\$593.05	YC20150FE				



SLC SERIES SPRING-LOADED Y-CHECK VALVES

All Spring-Loaded Y-Check Valves are suitable for both horizontal and vertical installation. 1" valves are furnished with extra 1/2" and 3/4" threaded reducer bushings. 2" valves are furnished with extra 1-1/2" threaded reducer bushings.

PVC FPM SEALS

Price Code C

SIZE	END CONN.	PRICE	PART NO.
1"	Threaded	\$211.85	SLC10100T
2"	Threaded	\$281.40	SLC10200T
3"	Threaded	\$468.35	SLC10300T
4"	Threaded	\$603.00	SLC10400T

PVC EPDM SEALS

Price Code C

SIZE	END CONN.	PRICE	PART NO.
1"	Threaded	\$204.20	SLC10100TE
2"	Threaded	\$273.75	SLC10200TE
3"	Threaded	\$451.30	SLC10300TE
4"	Threaded	\$568.30	SLC10400TE

CHECK VALVES



YC SERIES TRUE UNION Y-CHECK VALVES

All Y-Check Valves are assembled with silicone free lubricant.

PVC FPM SEAT & SEALS

Price Code B

SIZE	END CONN.	PRICE	PART NO.	SIZE	END CONN.	PRICE	PART NO.
1/2"	Socket	\$115.55	YC10050SU	2"	Socket	\$279.50	YC10200SU
	Threaded	\$115.55	YC10050TU		Threaded	\$279.50	YC10200TU
3/4"	Socket	\$126.50	YC10075SU	2-1/2"	Socket	\$556.40	YC10250SU
	Threaded	\$126.50	YC10075TU		Threaded	\$556.40	YC10250TU
1"	Socket	\$132.90	YC10100SU	3"	Socket	\$573.45	YC10300SU
	Threaded	\$132.90	YC10100TU		Threaded	\$573.45	YC10300TU
1-1/4"	Socket	\$215.30	YC10125SU	4"	Socket	\$910.55	YC10400SU
	Threaded	\$215.30	YC10125TU		Threaded	\$910.55	YC10400TU
1-1/2"	Socket	\$235.55	YC10150SU				
	Threaded	\$235.55	YC10150TU				

PVC EPDM SEAT & SEALS

Price Code B

SIZE	END CONN.	PRICE	PART NO.	SIZE	END CONN.	PRICE	PART NO.
1/2"	Socket	\$115.55	YC10050SEU	2"	Socket	\$279.50	YC10200SEU
	Threaded	\$115.55	YC10050TEU		Threaded	\$279.50	YC10200TEU
3/4"	Socket	\$126.50	YC10075SEU	2-1/2"	Socket	\$556.40	YC10250SEU
	Threaded	\$126.50	YC10075TEU		Threaded	\$556.40	YC10250TEU
1"	Socket	\$132.90	YC10100SEU	3"	Socket	\$573.45	YC10300SEU
	Threaded	\$132.90	YC10100TEU		Threaded	\$573.45	YC10300TEU
1-1/4"	Socket	\$215.30	YC10125SEU	4"	Socket	\$910.55	YC10400SEU
	Threaded	\$215.30	YC10125TEU		Threaded	\$910.55	YC10400TEU
1-1/2"	Socket	\$235.55	YC10150SEU				
	Threaded	\$235.55	YC10150TEU				



YC SERIES TRUE UNION Y-CHECK VALVES (cont.)

All Y-Check Valves are assembled with silicone free lubricant.

CPVC FPM SEAT & SEALS

Price Code B

SIZE	END CONN.	PRICE	PART NO.	SIZE	END CONN.	PRICE	PART NO.
1/2"	Socket	\$263.85	YC20050SU	2"	Socket	\$722.05	YC20200SU
	Threaded	\$263.85	YC20050TU		Threaded	\$722.05	YC20200TU
3/4"	Socket	\$295.50	YC20075SU	2-1/2"	Socket	\$861.45	YC20250SU
	Threaded	\$295.50	YC20075TU		Threaded	\$861.45	YC20250TU
1"	Socket	\$362.45	YC20100SU	3"	Socket	\$887.90	YC20300SU
	Threaded	\$362.45	YC20100TU		Threaded	\$887.90	YC20300TU
1-1/4"	Socket	\$587.00	YC20125SU	4"	Socket	\$1,479.20	YC20400SU
	Threaded	\$587.00	YC20125TU		Threaded	\$1,479.20	YC20400TU
1-1/2"	Socket	\$592.70	YC20150SU				
	Threaded	\$592.70	YC20150TU				

CPVC EPDM SEAT & SEALS

Price Code B

SIZE	END CONN.	PRICE	PART NO.	SIZE	END CONN.	PRICE	PART NO.
1/2"	Socket	\$263.85	YC20050SEU	2"	Socket	\$722.05	YC20200SEU
	Threaded	\$263.85	YC20050TEU		Threaded	\$722.05	YC20200TEU
3/4"	Socket	\$295.50	YC20075SEU	2-1/2"	Socket	\$861.45	YC20250SEU
	Threaded	\$295.50	YC20075TEU		Threaded	\$861.45	YC20250TEU
1"	Socket	\$362.45	YC20100SEU	3"	Socket	\$887.90	YC20300SEU
	Threaded	\$362.45	YC20100TEU		Threaded	\$887.90	YC20300TEU
1-1/4"	Socket	\$587.00	YC20125SEU	4"	Socket	\$1,479.20	YC20400SEU
	Threaded	\$587.00	YC20125TEU		Threaded	\$1,479.20	YC20400TEU
1-1/2"	Socket	\$592.70	YC20150SEU				
	Threaded	\$592.70	YC20150TEU				



SLC SERIES SPRING-LOADED TRUE UNION Y-CHECK VALVES (cont.)

All Spring-Loaded Y-Check Valves are suitable for both horizontal and vertical installation. 1" valves are furnished with extra 1/2" and 3/4" threaded reducer bushings. 2" valves are furnished with extra 1-1/2" threaded reducer bushings.

PVC FPM SEAT & SEALS

Price Code C

SIZE	END CONN.	PRICE	PART NO.	SIZE	END CONN.	PRICE	PART NO.
1/2"	Socket	\$121.70	SLC10050SU	2"	Socket	\$304.25	SLC10200SU
	Threaded	\$121.70	SLC10050TU		Threaded	\$304.25	SLC10200TU
3/4"	Socket	\$133.10	SLC10075SU	2-1/2"	Socket	\$506.25	SLC10250SU
	Threaded	\$133.10	SLC10075TU		Threaded	\$506.25	SLC10250TU
1"	Socket	\$229.75	SLC10100SU	3"	Socket	\$506.25	SLC10300SU
	Threaded	\$229.75	SLC10100TU		Threaded	\$506.25	SLC10300TU
1-1/4"	Socket	\$229.75	SLC10125SU	4"	Socket	\$652.25	SLC10400SU
	Threaded	\$229.75	SLC10125TU		Threaded	\$652.25	SLC10400TU
1-1/2"	Socket	\$247.95	SLC10150SU				
	Threaded	\$247.95	SLC10150TU				

PVC EPDM SEAT & SEALS

Price Code C

SIZE	END CONN.	PRICE	PART NO.	SIZE	END CONN.	PRICE	PART NO.
1/2"	Socket	\$115.65	SLC10050SEU	2"	Socket	\$296.25	SLC10200SEU
	Threaded	\$115.65	SLC10050TEU		Threaded	\$296.25	SLC10200TEU
3/4"	Socket	\$126.50	SLC10075SEU	2-1/2"	Socket	\$487.35	SLC10250SEU
	Threaded	\$126.50	SLC10075TEU		Threaded	\$487.35	SLC10250TEU
1"	Socket	\$220.50	SLC10100SEU	3"	Socket	\$487.35	SLC10300SEU
	Threaded	\$220.50	SLC10100TEU		Threaded	\$487.35	SLC10300TEU
1-1/4"	Socket	\$220.50	SLC10125SEU	4"	Socket	\$613.55	SLC10400SEU
	Threaded	\$220.50	SLC10125TEU		Threaded	\$613.55	SLC10400TEU
1-1/2"	Socket	\$235.60	SLC10150SEU				
	Threaded	\$235.60	SLC10150TEU				



WCV SERIES FULL WAFER CHECK VALVES

- New WCV Full Wafer Check Valves require No Spacer or Specialty Flange
- High Flow Rate, Equal to or Greater than Metal Counterparts
- Size Range 2" - 8"
- Pressure Rated at 150 PSI for All Sizes
- Fits both ANSI125/150 and DIN/PN10* Flange Patterns

Price Code C

PVC		WITH SPRING (O-Ring/Spring Materials)			NO SPRING	
		FPM/SS	EPDM/SS	FPM/ HASTELLOY®	FPM	EPDM
SIZE	ITEM NO.	(VS)	(ES)	(VH)	(V)	(E)
2"	WCV1200XX	\$242.80	\$232.00	\$330.50	\$208.80	\$199.50
2-1/2"	WCV1250XX	\$285.60	\$270.00	\$398.80	\$245.60	\$232.20
3"	WCV1300XX	\$340.00	\$312.00	\$472.25	\$292.40	\$268.30
4"	WCV1400XX	\$400.00	\$357.00	\$555.55	\$344.00	\$307.00
6"	WCV1600XX	\$565.00	\$510.00	\$784.75	\$485.90	\$438.60
8"	WCV1800XX	\$1,075.00	\$1,007.00	\$1,493.05	\$924.50	\$866.02

Price Code C

GFFP		WITH SPRING (O-Ring/Spring Materials)			NO SPRING	
		FPM/SS	EPDM/SS	FPM/ HASTELLOY®	FPM	EPDM
SIZE	ITEM NO.	(VS)	(ES)	(VH)	(V)	(E)
2"	WCV4200XX	\$269.80	\$257.80	\$375.60	\$232.00	\$221.70
2-1/2"	WCV4250XX	\$317.35	\$300.00	\$453.20	\$272.90	\$258.00
3"	WCV4300XX	\$397.00	\$369.00	\$507.75	\$345.40	\$321.05
4"	WCV4400XX	\$436.00	\$412.00	\$610.50	\$379.35	\$358.45
6"	WCV4600XX	\$595.00	\$555.50	\$862.35	\$517.65	\$483.30
8"	WCV4800XX	\$1,135.00	\$1,078.00	\$1,640.75	\$987.45	\$937.90

Price Code C

CPVC		WITH SPRING (O-Ring/Spring Materials)			NO SPRING	
		FPM/SS	EPDM/SS	FPM/ HASTELLOY®	FPM	EPDM
SIZE	ITEM NO.	(VS)	(ES)	(VH)	(V)	(E)
2"	WCV2200XX	\$303.50	\$290.00	\$423.70	\$261.00	\$249.40
2-1/2"	WCV2250XX	\$357.00	\$337.50	\$511.30	\$307.00	\$290.25
3"	WCV2300XX	\$441.55	\$400.00	\$605.40	\$374.90	\$353.05
4"	WCV2400XX	\$500.00	\$457.70	\$685.90	\$424.70	\$393.65
6"	WCV2600XX	\$706.25	\$637.50	\$968.80	\$585.40	\$548.25
8"	WCV2800XX	\$1,343.75	\$1,258.75	\$1,866.30	\$1,155.65	\$1,082.50



WC SERIES WAFER CHECK VALVES

- Large Sizes only 10" - 20" in PVC and PP
- Valves are supplied with o-rings set into body faces. In most cases flange gaskets will not be required.
- Spacers allow full disk opening with minimum interference with pipe I.D., and are required when using schedule 80 pipe.
- Spacers are not required for DIN and PVDF pipe.

NOTE: WC series pictured with spring option.

Price Code C

PVC		WITH SPRING (O-Ring/Spring Materials ²)			NO SPRING		
		FPM/SS	EPDM/SS	PTFE ¹ / HASTELLOY [®]	FPM	EPDM	PTFE ¹
SIZE	ITEM NO.	(VS)	(ES)	(PH.*)	(V)	(E)	(P.*)
10"	WC11000XX	\$1,845.05	\$1,610.20	\$2,014.65	\$1,722.30	\$1,520.85	\$1,860.15
12"	WC11200XX	\$2,414.55	\$2,105.55	\$2,634.25	\$2,299.50	\$1,990.55	\$2,414.55
14"	WC11400XX	\$5,759.15	\$5,759.15	POA	\$3,591.55	\$3,591.55	POA
16"	WC11600XX	\$7,367.85	\$7,367.85	POA	\$4,203.50	\$4,203.50	POA
20"	WC12000XX	NA	NA	NA	\$8,902.30	\$8,902.30	POA

Price Code C

PP		WITH SPRING (O-Ring/Spring Materials ²)			NO SPRING		
		FPM/SS	EPDM/SS	PTFE ¹ / HASTELLOY [®]	FPM	EPDM	PTFE ¹
SIZE	ITEM NO.	(VS)	(ES)	(PH.*)	(V)	(E)	(P.*)
10"	WC41000XX	\$1,891.95	\$1,635.90	\$2,040.40	\$1,751.05	\$1,493.55	\$1,890.55
12"	WC41200XX	\$2,767.45	\$2,460.00	\$2,649.35	\$2,314.50	\$2,007.10	\$2,429.70
14"	WC41400XX	\$5,759.15	\$5,759.15	POA	\$3,591.55	\$3,591.55	POA
16"	WC41600XX	\$7,367.85	\$7,367.85	POA	\$4,203.50	\$4,203.50	POA
20"	WC42000XX	NA	NA	NA	\$8,902.30	\$8,902.30	POA

¹ PTFE o-rings are PFA encapsulated FPM.

² Valves with FPM or EPDM o-rings are supplied w/316 SS springs. Valves with PTFE o-rings are normally supplied w/Hastelloy[®] o-rings.

* Special order and non-returnable

• Available with longer lead time

POA = Priced On Availability, consult factory for price and availability.



WC SERIES WAFER CHECK VALVES (PVDF)

- Valves are supplied with o-rings set into body faces. In most cases flange gaskets will not be required.
- Valves up to 8" usually require a spacer and should always be the same material as the valve.
- Spacers allow full disk opening with minimum interference with pipe I.D., and are required when using schedule 80 pipe.
- Spacers are not required for DIN and PVDF pipe.

PVDF prices do not include spacers.

NOTE: Wafer check pictured with spring option.

Price Code C

PVDF		WITH SPRING (O-Ring/Spring Materials ²)		NO SPRING	
		FPM/SS	PTFE ¹ / HASTELLOY®	FPM	PTFE ¹
SIZE	ITEM NO.	(VS)	(PH•*)	(V)	(P•*)
2"	WC5200XX	\$616.30	\$911.80	\$517.30	\$718.35
2-1/2"	WC5250XX	\$716.85	\$947.90	\$608.35	\$845.70
3"	WC5300XX	\$995.05	\$1,202.50	\$837.90	\$1,089.45
4"	WC5400XX	\$1,375.50	\$1,589.25	\$1,205.70	\$1,468.25
5"	WC5500XX	\$1,837.55	\$2,063.95	\$1,672.55	\$1,942.90
6"	WC5600XX	\$2,159.85	\$2,340.65	\$1,875.35	\$2,224.20
8"	WC5800XX	\$3,915.60	\$4,316.55	\$3,815.10	\$4,211.20
10"	WC51000XX	\$4,217.55	\$4,454.80	\$4,116.90	\$4,553.85
12"	WC51200XX	\$5,577.15	\$5,968.55	\$5,577.15	\$6,072.40
14"	WC51400XX	POA	POA	POA	POA
16"	WC51600XX	POA	POA	POA	POA
20"	WC52000XX	POA	POA	POA	POA

¹ PTFE o-rings are PFA encapsulated FPM.

² Valves with FPM or EPDM o-rings are supplied w/316 SS springs. Valves with PTFE o-rings are normally supplied w/Hastelloy® o-rings.

* Special order and non-returnable

• Available with longer lead time

POA = Priced On Availability, consult factory for price and availability.



WC SERIES WAFER CHECK VALVE SPACERS

Price Code C

PVC			PP		PVDF	
SIZE	ITEM NO.	LIST PRICE	ITEM NO.	LIST PRICE	ITEM NO.	LIST PRICE
2"	-	-	-	-	WCX502SP	\$198.75
2-1/2"	-	-	-	-	WCX525SP	\$259.85
3"	-	-	-	-	WCX503SP	\$370.25
4"	-	-	-	-	WCX504SP	\$519.70
5"	-	-	-	-	WCX505SP	\$1,104.30
6"	-	-	-	-	WCX506SP	\$1,299.10
8"	-	-	-	-	WCX508SP	\$1,675.85
10"	WCX110SP	\$902.15	WCX410SP	\$902.15	WCX510SP	POA
12"	WCX112SP	\$1,353.30	WCX412SP	\$1,353.30	WCX512SP	POA
14"	WCX114SP	\$1,803.25				
16"	WCX116SP	\$2,074.60				



Lever Operator

BY SERIES BUTTERFLY VALVES

Sizes 1-1/2" to 12"

- Valves have Type 316 Stainless Steel Shafts
- Valves are assembled with silicone free lubricant.
- 1-1/2" - 6" valves equipped with lever handle.
- 8" valves equipped with either lever handle or gear operator.
- 10" - 12" equipped with gear operator.

For Actuator-ready, see Price List ACT-05.



Gear Operator

Price Code B

SIZE	BODY	DISC	FPM LINER & SEALS		EPDM LINER & SEALS		NITRILE LINER & SEALS	
			PRICE	PART NO.	PRICE	PART NO.	PRICE	PART NO.
1-1/2" - 2"	PVC	PVC	\$526.00	BY110200VLA	\$252.15	BY110200ELA	\$252.15	BY110200NLA
	PVC	PP	\$543.00	BY140200VLA	\$259.80	BY140200ELA	\$259.80	BY140200NLA
	PP	PP	\$538.15	BY440200VLA	\$257.45	BY440200ELA	\$257.45	BY440200NLA
	CPVC	CPVC	\$700.00	BY220200VLA	\$330.95	BY220200ELA	\$344.10	BY220200NLA
3"	PVC	PVC	\$601.55	BY110300VL	\$278.30	BY110300EL	\$273.15	BY110300NL
	PVC	PP	\$620.30	BY140300VL	\$287.70	BY140300EL	\$287.70	BY140300NL
	PP	PP	\$614.75	BY440300VL	\$285.10	BY440300EL	\$296.05	BY440300NL
	CPVC	CPVC	\$768.00	BY220300VL	\$382.65	BY220300EL	\$375.40	BY220300NL
4"	PVC	PVC	\$741.30	BY110400VL	\$323.20	BY110400EL	\$317.25	BY110400NL
	PVC	PP	\$753.65	BY140400VL	\$337.15	BY140400EL	\$337.15	BY140400NL
	PP	PP	\$746.90	BY440400VL	\$334.10	BY440400EL	\$347.00	BY440400NL
	CPVC	CPVC	\$962.35	BY220400VL	\$444.95	BY220400EL	\$436.55	BY220400NL
6"	PVC	PVC	\$1,203.80	BY110600VL	\$490.25	BY110600EL	\$481.20	BY110600NL
	PVC	PP	\$1,240.30	BY140600VL	\$505.95	BY140600EL	\$505.95	BY140600NL
	PP	PP	\$1,217.30	BY440600VL	\$496.55	BY440600EL	\$515.70	BY440600NL
	CPVC	CPVC	\$1,561.55	BY220600VL	\$673.15	BY220600EL	\$706.80	BY220600NL
8"	PVC	PVC	\$2,015.05	BY110800VL	\$871.85	BY110800EL	\$839.55	BY110800NL
	PVC	PP	\$2,070.60	BY140800VL	\$898.10	BY140800EL	\$881.50	BY140800NL
	PP	PP	\$2,032.25	BY440800VL	\$881.50	BY440800EL	\$915.35	BY440800NL
	CPVC	CPVC	\$2,134.15	BY220800VL	\$999.50	BY220800EL	\$1,018.35	BY220800NL
8"	PVC	PVC	\$2,391.55	BY110800VG	\$1,151.30	BY110800EG	\$1,108.65	BY110800NG
	PVC	PP	\$2,448.45	BY140800VG	\$1,168.10	BY140800EG	\$1,146.45	BY140800NG
	PP	PP	\$2,762.55	BY440800VG	\$1,146.45	BY440800EG	\$1,190.55	BY440800NG
	CPVC	CPVC	\$2,426.25	BY220800VG	\$1,369.30	BY220800EG	\$1,395.15	BY220800NG
10"	PP	PVC	\$4,327.95	BY41100VG	\$1,700.00	BY41100EG	\$1,700.00	BY41100NG
	PP	PP	\$4,458.20	BY44100VG	\$1,750.05	BY44100EG	\$1,783.70	BY44100NG
12"	PP	PVC	\$5,924.80	BY41120VG	\$2,353.00	BY41120EG	\$2,353.00	BY41120NG
	PP	PP	\$6,090.85	BY44120VG	\$2,423.15	BY44120EG	\$2,423.15	BY44120NG

All BY Series butterfly valves conform to ANSI except 10".

PP = GFPP



BYB SERIES BUTTERFLY VALVES SIZES 10" - 24" - GEAR OPERATED

All BYB Series Industrial Butterfly Valves have Type 410 SS stems.

Price Code B

SIZE	BODY	DISC	FPM LINER & SEALS		EPDM LINER & SEALS		NITRILE LINER & SEALS	
			PRICE	PART NO.	PRICE	PART NO.	PRICE	PART NO.
10"	PVC	PP	\$3,396.20	BYB1100F3GGA	\$1,638.00	BYB1100E3GGA	\$1,638.00	BYB1100N3GGA
	CPVC	CPVC	\$3,410.25	BYB2100F2GGA	\$1,876.05	BYB2100E2GGA	\$1,876.05	BYB2100N2GGA
	PP	PP	\$3,479.85	BYB3100F3GGA	\$1,836.90	BYB3100E3GGA	\$1,836.90	BYB3100N3GGA
	PVDF	PVDF	\$13,273.65	BYB5100F5GWA	\$11,552.45	BYB5100E5GWA	\$11,552.45	BYB5100N5GWA
12"	PVC	PP	\$4,016.95	BYB1120F3GGA	\$2,120.85	BYB1120E3GGA	\$2,120.85	BYB1120N3GGA
	CPVC	CPVC	\$4,679.95	BYB2120F2GGA	\$2,951.10	BYB2120E2GGA	\$2,951.10	BYB2120N2GGA
	PP	PP	\$4,289.80	BYB3120F3GGA	\$2,270.10	BYB3120E3GGA	\$2,270.10	BYB3120N3GGA
	PVDF	PVDF	\$16,686.50	BYB5120F5GWA	\$14,664.65	BYB5120E5GWA	\$14,664.65	BYB5120N5GWA
14"	PVC	PP	\$16,049.35	BYB1140F3GGA	\$6,604.30	BYB1140E3GGA	\$6,604.30	BYB1140N3GGA
	CPVC	CPVC	\$21,961.95	BYB2140F2GGA	\$9,037.70	BYB2140E2GGA	\$9,037.70	BYB2140N2GGA
	PP	PP	\$16,894.25	BYB3140F3GGA	\$6,952.05	BYB3140E3GGA	\$6,952.05	BYB3140N3GGA
	PVDF	PVDF	\$18,403.30	BYB5140F5GWA	\$15,690.30	BYB5140E5GWA	\$15,690.30	BYB5140N5GWA
16"	PVC	PP	\$18,182.90	BYB1160F3GGA	\$10,810.35	BYB1160E3GGA	\$10,810.35	BYB1160N3GGA
	CPVC	CPVC	\$24,882.80	BYB2160F2GGA	\$14,794.05	BYB2160E2GGA	\$14,794.05	BYB2160N2GGA
	PP	PP	\$19,140.65	BYB3160F3GGA	\$11,380.05	BYB3160E3GGA	\$11,380.05	BYB3160N3GGA
	PVDF	PVDF	\$26,900.15	BYB5160F5GWA	\$23,312.30	BYB5160E5GWA	\$23,312.30	BYB5160N5GWA
18"	PVC	PP	\$21,211.90	BYB1180F3GGA	\$14,620.50	BYB1180E3GGA	\$14,620.50	BYB1180N3GGA
	CPVC	CPVC	\$29,028.00	BYB2180F2GGA	\$20,007.10	BYB2180E2GGA	\$20,007.10	BYB2180N2GGA
	PP	PP	\$22,329.20	BYB3180F3GGA	\$15,390.15	BYB3180E3GGA	\$15,390.15	BYB3180N3GGA
	PVDF	PVDF	POA	BYB5180F5GWA	POA	BYB5180E5GWA	POA	BYB5180N5GWA
20"	PVC	PP	\$25,236.15	BYB1200F3GGA	\$16,295.90	BYB1200E3GGA	\$16,295.90	BYB1200N3GGA
	CPVC	CPVC	\$34,534.60	BYB2200F2GGA	\$22,299.90	BYB2200E2GGA	\$22,299.90	BYB2200N2GGA
	PP	PP	\$26,565.10	BYB3200F3GGA	\$17,153.75	BYB3200E3GGA	\$17,153.75	BYB3200N3GGA
	PVDF	PVDF	POA	BYB5200F5GWA	POA	BYB5200E5GWA	POA	BYB5200N5GWA
24"	PVC	PP	POA	BYB1240F3GGA	\$23,347.95	BYB1240E3GGA	\$23,347.95	BYB1240N3GGA
	CPVC	CPVC	POA	BYB2240F2GGA	POA	BYB2240E2GGA	POA	BYB2240N2GGA
	PP	PP	\$35,711.75	BYB3240F3GGA	\$24,569.10	BYB3240E3GGA	\$24,569.10	BYB3240N3GGA
	PVDF	PVDF	POA	BYB5240F5GWA	POA	BYB5240E5GWA	POA	BYB5240N5GWA

POA = Priced On Availability, consult factory for pricing and availability.

BUTTERFLY VALVE OPTIONS

Add to price of butterfly valves above.

Price Code B

SIZE	GEAR BOX*		2" SQUARE NUT**	TITANIUM SHAFT	316 SSTL LUGS
	Aluminum (IP65)	Epoxy Coated (IP68)			(Suffix I)
1-1/2" - 2"	\$427.30	\$1,432.20	\$155.75	\$434.75	\$375.85
3"	\$427.30	\$1,432.20	\$155.75	\$448.30	\$375.85
4"	\$427.30	\$1,432.20	\$155.75	\$528.50	\$672.20
6"	\$427.30	\$1,432.20	\$155.75	\$1,608.50	\$672.20
8"	STANDARD	\$1,432.20	\$155.75	CONSULT FACTORY	\$672.20
10"	STANDARD	\$1,787.10	NA	CONSULT FACTORY	\$2,085.65
12"	STANDARD	\$1,787.10	NA	CONSULT FACTORY	\$2,085.65
14" - 24"	STANDARD	\$1,787.10	NA	CONSULT FACTORY	CONSULT FACTORY

* For 1-1/2" - 10" BY Series, a gear box chain operator is available, Part # CO2RA, list price \$536.45. For 12" - 24", consult factory. CHAIN NOT INCLUDED.

**Square nuts are available for the gear box, consult factory.



BUTTERFLY VALVE OPTIONS (cont.)

STEM EXTENSION PART NUMBER MATRIX

Stem extension is a price adder to the List Price of the Butterfly Valve.
See Page 28 for stem extension pricing.

Gear Operator

BY SERIES - Unsupported

Price Code C

SIZE	HANDLE	HANDLE	HANDWHEEL EXTENSION FOR GEARBOX	
	Min. Length (in.)	Max. Length (in.)	Min. Length (in.)	Max. Length (in.)
2"	SPGBY3EXTL012	SPGBY3EXTL120	SPGBY3EXT012	SPGBY3EXT180
3"	SPGBY3EXTL012	SPGBY3EXTL120	SPGBY3EXT012	SPGBY3EXT180
4"	SPGBY4EXTL012	SPGBY4EXTL120	SPGBY4EXT012	SPGBY4EXT180
6"	SPGBY6EXTL012	SPGBY6EXTL120	SPGBY6EXT012	SPGBY6EXT180
8"	SPGBY8EXTL012	SPGBY8EXTL120	SPGBY8EXT012	SPGBY8EXT180
10"	NA	NA	SPGBY10EXT012	SPGBY10EXT180
12"	NA	NA	SPGBY10EXT012	SPGBY10EXT108

BYB SERIES-Unsupported Price Code C

SIZE	HANDWHEEL EXTENSION FOR GEARBOX	
	Min. Length (in.)	Max. Length (in.)
10"	SPGBYB10EXT012	SPGBYB10EXT180
12"	SPGBYB12EXT012	SPGBYB12EXT180
14"	SPGBYB14EXT012	SPGBYB14EXT180
16"	SPGBYB16EXT012	SPGBYB16EXT180
18"	SPGBYB16EXT012	SPGBYB16EXT180
20"	SPGBYB20EXT012	SPGBYB20EXT180
24"	SPGBYB20EXT012	SPGBYB20EXT180

BUTTERFLY VALVES

BY SERIES - Supported

Price Code C

SIZE	Alum. Housing/ SSTL Shaft Ext.	Alum. Housing/ SSTL Shaft Ext.	SSTL Housing/ SSTL Shaft Ext.	SSTL Housing/ SSTL Shaft Ext.
	Min. Length (in.)	Max. Length (in.)	Min. Length (in.)	Max. Length (in.)
2"	LFSE3X012	LFSE3X120	HCBY3EX012SS	HCBY3EX120SS
3"	LFSE3X012	LFSE3X120	HCBY3EX012SS	HCBY3EX120SS
4"	LFSE4X012	LFSE4X120	HCBY4EX012SS	HCBY4EX120SS
6"	LFSE6X012	LFSE6X120	HCBY6EX012SS	HCBY6EX120SS
8"	LFSE8X012	LFSE8X120	HCBY8EX012SS	HCBY8EX120SS
10"	LFSE10X012	LFSE10X120	HCBY10EX012SS	HCBY10EX120SS
12"	LFSE10X012	LFSE10X108	HCBY10EX012SS	HCBY10EX120SS

BY SERIES - Supported

Price Code C

SIZE	Steel	Steel	PVC Housing/ SSTL Shaft Ext.	PVC Housing/ SSTL Shaft Ext.
	Min. Length (in.)	Max. Length (in.)	Min. Length (in.)	Max. Length (in.)
2"	HCBY3EX012ST	HCBY3EX120ST	HCBY3EX012	HCBY3EX120
3"	HCBY3EX012ST	HCBY3EX120ST	HCBY3EX012	HCBY3EX120
4"	HCBY4EX012ST	HCBY4EX120ST	HCBY4EX012	HCBY4EX120
6"	HCBY6EX012ST	HCBY6EX120ST	HCBY6EX012	HCBY6EX096
8"	HCBY8EX012ST	HCBY8EX120ST	HCBY8EX012	HCBY8EX096
10"	HCBY10EX012ST	HCBY10EX120ST	HCBY10EX012	HCBY10EX060
12"	HCBY10EX012ST	HCBY10EX120ST	HCBY10EX012	HCBY10EX060

BYB SERIES - Supported

Price Code C

SIZE	Alum. Housing/ SSTL Shaft Ext.	Alum. Housing/ SSTL Shaft Ext.	SSTL Housing/ SSTL Shaft Ext.	SSTL Housing/ SSTL Shaft Ext.	Steel	Steel
	Min. Length (in.)	Max. Length (in.)	Min. Length (in.)	Max. Length (in.)	Min. Length (in.)	Max. Length (in.)
10"	LFSEB10X012	LFSEB10X120	HCBYB10EX012SS	HCBYB10EX120SS	HCBYB10EX012ST	HCBYB10EX120ST
12"	LFSEB12X012	LFSEB12X120	HCBYB12EX012SS	HCBYB12EX120SS	HCBYB12EX012ST	HCBYB12EX120ST
14"	LFSEB14X012	LFSEB14X120	HCBYB14EX012SS	HCBYB14EX120SS	HCBYB14EX012ST	HCBYB14EX120ST
16"	LFSEB16X012	LFSEB16X120	HCBYB16EX012SS	HCBYB16EX120SS	HCBYB16EX012ST	HCBYB16EX120ST
18"	LFSEB16X012	LFSEB16X120	HCBYB16EX012SS	HCBYB16EX120SS	HCBYB16EX012ST	HCBYB16EX120ST
20"	LFSEB20X012	LFSEB20X120	HCBYB20EX012SS	HCBYB20EX120SS	HCBYB20EX012ST	HCBYB20EX120ST
24"	LFSEB20X012	LFSEB20X120	HCBYB20EX012SS	HCBYB20EX120SS	HCBYB20EX012ST	HCBYB20EX120ST

BUTTERFLY VALVE STEM EXTENSION* PRICE**Price Code C**

LENGTH	TYPE EXTENSION	PRICE
First 24"	1-1/2" - 8" 316 SS/Alum Stem Extension Unsupported Lever (not included)	\$562.70
Ea. Addtn'l 6"	1-1/2" - 8" 316 SS/Alum Stem Extension Unsupported Lever (not included)	\$37.55
Wall Support Bracket	1-1/2" - 8" 316 SS/Alum Stem Extension Unsupported Lever (not included)	\$223.30
First 24"	1-1/2" - 8" Plastic or Carbon Steel supported Stem Extension for Gear Op. or Act. (not included)	\$727.70
Ea. Addtn'l 6"	1-1/2" - 8" Plastic or Carbon Steel supported Stem Extension for Gear Op. or Act. (not included)	\$55.50
First 24"	1-1/2" - 8" Aluminum supported Stem Extension for Gear Op. or Act. (not included)	\$727.70
Ea. Addtn'l 6"	1-1/2" - 8" Aluminum supported Stem Extension for Gear Op. or Act. (not included)	\$67.50
First 24"	1-1/2" - 8" SS supported Stem Extension for Gear Op. Act. (not included)	\$855.30
Ea. Addtn'l 6"	1-1/2" - 8" SS supported Stem Extension for Gear Op. or Act. (not included)	\$74.95
First 24"	10" - 12" Plastic supported Stem Extension for Gear Op. or Act. (not included)	\$810.25
Ea. Addtn'l 6"	10" - 12" Plastic supported Stem Extension for Gear Op. or Act. (not included)	\$63.00
First 24"	10" - 12" Aluminum supported Stem Extension for Gear Op. or Act. (not included)	\$892.80
Ea. Addtn'l 6"	10" - 12" Aluminum supported Stem Extension for Gear Op. or Act. (not included)	\$74.95
First 24"	10" - 12" SS supported Stem Extension for Gear Op. or Act. (not included)	\$1,027.80
Ea. Addtn'l 6"	10" - 12" SS supported Stem Extension for Gear Op. or Act. (not included)	\$82.55
First 24"	10" - 24" Carbon Steel supported Stem Extension for Gear Op. or Act. (not included)	\$1,020.35
Ea. Addtn'l 6"	10" - 24" Carbon Steel supported Stem Extension for Gear Op. or Act. (not included)	\$127.55
First 24"	14" - 24" Carbon Steel supported Stem Extension for Gear Op. or Act. (not included)	\$1,192.90
Ea. Addtn'l 6"	14" - 24" Carbon Steel supported Stem Extension for Gear Op. or Act. (not included)	\$165.10

* Neither a Gear Box Operator nor an Actuator are included with stem extensions. These items must be purchased separately.

**SURE-TUFF™****BYCS SERIES BUTTERFLY VALVES**

Sizes 2" to 8"

- Valves have Type 410 Stainless Steel Shafts
- Red lever handle

Price Code B

SIZE	DESCRIPTION			LEVER		GEAR	
	BODY	DISC	LINER	PRICE	PART NO.	PRICE	PART NO.
2"	PVC	PVC	EPDM	\$123.65	BYCS1020E1LGA	\$384.50	BYCS1020E1GGA
2-1/2"				\$123.70	BYCS1025E1LGA	\$393.55	BYCS1025E1GGA
3"				\$140.65	BYCS1030E1LGA	\$401.50	BYCS1030E1GGA
4"				\$154.25	BYCS1040E1LGA	\$415.10	BYCS1040E1GGA
5"				\$215.50	BYCS1050E1LGA	\$476.35	BYCS1050E1GGA
6"				\$237.05	BYCS1060E1LGA	\$497.90	BYCS1060E1GGA
8"				\$414.00	BYCS1080E1LGA	\$674.85	BYCS1080E1GGA

NEW

PURE-BLU™ BYCN SERIES NSF/ANSI 61 LISTED BUTTERFLY VALVES

Sizes 2" to 8"

- Valves have Type 316 Stainless Steel Shafts
- Blue lever handle

Price Code B

SIZE	DESCRIPTION			LEVER		GEAR	
	BODY	DISC	LINER	PRICE	PART NO.	PRICE	PART NO.
2"	PVC	PVC	EPDM	\$132.35	BYCN1020E1LGB	\$411.45	BYCN1020E1GGB
2-1/2"				\$132.35	BYCN1025E1LGB	\$421.10	BYCN1025E1GGB
3"				\$150.50	BYCN1030E1LGB	\$429.60	BYCN1030E1GGB
4"				\$165.05	BYCN1040E1LGB	\$444.15	BYCN1040E1GGB
5"				\$230.60	BYCN1050E1LGB	\$509.70	BYCN1050E1GGB
6"				\$253.65	BYCN1060E1LGB	\$532.75	BYCN1060E1GGB
8"				\$443.00	BYCN1080E1LGB	\$722.10	BYCN1080E1GGB



SV SERIES TRUE UNION SOLENOID VALVES

Price Code C

SIZE	PVC/FPM SEALS			PVC/EPDM SEALS		
	END CONN.	PRICE	PART NO.	END CONN.	PRICE	PART NO.
1/2"	Socket/Threaded	\$319.75	SV10050STV	Socket/Threaded	\$311.95	SV10050STE
3/4"	Socket/Threaded	\$434.95	SV10075STV	Socket/Threaded	\$423.95	SV10075STE
1"	Socket/Threaded	\$475.75	SV10100STV	Socket/Threaded	\$461.75	SV10100STE

Price Code C

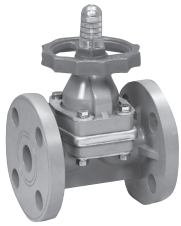
SIZE	CPVC/FPM SEALS			CPVC/EPDM SEALS		
	END CONN.	PRICE	PART NO.	END CONN.	PRICE	PART NO.
1/4"	Socket/Threaded	\$344.95	SV20025STV	Socket/Threaded	\$335.45	SV20025STE
1/2"	Socket/Threaded	\$344.95	SV20050STV	Socket/Threaded	\$335.45	SV20050STE
3/4"	Socket/Threaded	\$468.10	SV20075STV	Socket/Threaded	\$450.80	SV20075STE
1"	Socket/Threaded	\$505.65	SV20100STV	Socket/Threaded	\$491.60	SV20100STE

VOLTAGE OPTIONS

Price Code C

PART NO. SUFFIX	OPTION	PRICE
12A/D	12 VAC or VDC	\$124.45
24A/D	24 VAC or VDC	\$124.45
220A	220 VAC	\$124.45

CONTROL VALVES



DAB SERIES DIAPHRAGM VALVES (FLANGED)

All DAB Series Diaphragm Valves are assembled with silicone free lubricant and a highly visible, beacon type position indicator.

For Actuator-ready, see Price List ACT-05R.

PVC - FPM Diaphragm

Price Code C

SIZE	END CONN.	PRICE	PART NO.	SIZE	END CONN.	PRICE	PART NO.
1/2"	Flanged	\$145.65	DAB1005FFK	2"	Flanged	\$367.25	DAB1020FFK
3/4"	Flanged	\$167.40	DAB1007FFK	2-1/2"	Flanged	\$511.90	DAB1025FFK
1"	Flanged	\$219.35	DAB1010FFK	3"	Flanged	\$665.65	DAB1030FFK
1-1/4"	Flanged	\$296.05	DAB1012FFK	4"	Flanged	\$904.35	DAB1040FFK
1-1/2"	Flanged	\$296.05	DAB1015FFK	6"	Flanged	\$2,343.60	DAB1060FFK

PVC - EPDM Diaphragm*

Price Code C

SIZE	END CONN.	PRICE	PART NO.	SIZE	END CONN.	PRICE	PART NO.
1/2"	Flanged	\$122.25	DAB1005FEK	2"	Flanged	\$332.80	DAB1020FEK
3/4"	Flanged	\$140.60	DAB1007FEK	2-1/2"	Flanged	\$460.90	DAB1025FEK
1"	Flanged	\$185.85	DAB1010FEK	3"	Flanged	\$580.75	DAB1030FEK
1-1/4"	Flanged	\$245.70	DAB1012FEK	4"	Flanged	\$826.30	DAB1040FEK
1-1/2"	Flanged	\$245.70	DAB1015FEK	6"	Flanged	\$1,872.95	DAB1060FEK

PVC - PTFE Diaphragm*

Price Code C

SIZE	END CONN.	PRICE	PART NO.	SIZE	END CONN.	PRICE	PART NO.
1/2"	Flanged	\$182.55	DAB1005FPK	2"	Flanged	\$493.55	DAB1020FPK
3/4"	Flanged	\$199.20	DAB1007FPK	2-1/2"	Flanged	\$743.65	DAB1025FPK
1"	Flanged	\$294.70	DAB1010FPK	3"	Flanged	\$948.05	DAB1030FPK
1-1/4"	Flanged	\$390.15	DAB1012FPK	4"	Flanged	\$1,235.85	DAB1040FPK
1-1/2"	Flanged	\$428.50	DAB1015FPK	6"	Flanged	\$3,277.80	DAB1060FPK

CPVC - FPM Diaphragm

Price Code C

SIZE	END CONN.	PRICE	PART NO.	SIZE	END CONN.	PRICE	PART NO.
1/2"	Flanged	\$229.65	DAB2005FFK	2"	Flanged	\$577.85	DAB2020FFK
3/4"	Flanged	\$257.10	DAB2007FFK	2-1/2"	Flanged	\$842.40	DAB2025FFK
1"	Flanged	\$321.35	DAB2010FFK	3"	Flanged	\$1,264.80	DAB2030FFK
1-1/4"	Flanged	\$496.20	DAB2012FFK	4"	Flanged	\$1,735.30	DAB2040FFK
1-1/2"	Flanged	\$496.20	DAB2015FFK				

CPVC - EPDM Diaphragm*

Price Code C

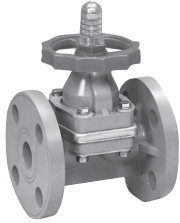
SIZE	END CONN.	PRICE	PART NO.	SIZE	END CONN.	PRICE	PART NO.
1/2"	Flanged	\$216.00	DAB2005FEK	2"	Flanged	\$449.90	DAB2020FEK
3/4"	Flanged	\$234.15	DAB2007FEK	2-1/2"	Flanged	\$741.35	DAB2025FEK
1"	Flanged	\$286.90	DAB2010FEK	3"	Flanged	\$975.20	DAB2030FEK
1-1/4"	Flanged	\$385.60	DAB2012FEK	4"	Flanged	\$1,291.45	DAB2040FEK
1-1/2"	Flanged	\$401.80	DAB2015FEK				

CPVC - PTFE Diaphragm*

Price Code C

SIZE	END CONN.	PRICE	PART NO.	SIZE	END CONN.	PRICE	PART NO.
1/2"	Flanged	\$281.25	DAB2005FPK	2"	Flanged	\$654.10	DAB2020FPK
3/4"	Flanged	\$311.40	DAB2007FPK	2-1/2"	Flanged	\$1,191.30	DAB2025FPK
1"	Flanged	\$390.15	DAB2010FPK	3"	Flanged	\$1,457.60	DAB2030FPK
1-1/4"	Flanged	\$491.25	DAB2012FPK	4"	Flanged	\$2,065.85	DAB2040FPK
1-1/2"	Flanged	\$577.60	DAB2015FPK				

* All EPDM and PTFE diaphragms are available with a PVDF vapor barrier, use Suffix A. See page 33 for adder.



DAB SERIES DIAPHRAGM VALVES (FLANGED)

All DAB Series Diaphragm Valves are assembled with silicone free lubricant and a highly visible, beacon type position indicator.

For Actuator-ready, see Price List ACT-05R.

PP - FPM Diaphragm

Price Code C

SIZE	END CONN.	PRICE	PART NO.	SIZE	END CONN.	PRICE	PART NO.
1/2"	Flanged	\$145.65	DAB3005FFK	2-1/2"	Flanged	\$511.90	DAB3025FFK
3/4"	Flanged	\$167.40	DAB3007FFK	3"	Flanged	\$665.65	DAB3030FFK
1"	Flanged	\$219.35	DAB3010FFK	4"	Flanged	\$904.35	DAB3040FFK
1-1/4"	Flanged	\$296.05	DAB3012FFK	6"	Flanged	\$2,343.60	DAB3060FFK
1-1/2"	Flanged	\$296.05	DAB3015FFK	8"	Flanged	\$4,214.60	DAB3080FFK
2"	Flanged	\$367.25	DAB3020FFK	10"	Flanged	\$8,125.55	DAB3100FFK

PP - EPDM Diaphragm*

Price Code C

SIZE	END CONN.	PRICE	PART NO.	SIZE	END CONN.	PRICE	PART NO.
1/2"	Flanged	\$122.25	DAB3005FEK	2-1/2"	Flanged	\$460.90	DAB3025FEK
3/4"	Flanged	\$140.60	DAB3007FEK	3"	Flanged	\$580.75	DAB3030FEK
1"	Flanged	\$185.85	DAB3010FEK	4"	Flanged	\$826.30	DAB3040FEK
1-1/4"	Flanged	\$245.70	DAB3012FEK	6"	Flanged	\$1,872.95	DAB3060FEK
1-1/2"	Flanged	\$245.70	DAB3015FEK	8"	Flanged	\$3,942.75	DAB3080FEK
2"	Flanged	\$332.80	DAB3020FEK	10"	Flanged	\$7,388.75	DAB3100FEK

PP - PTFE Diaphragm*

Price Code C

SIZE	END CONN.	PRICE	PART NO.	SIZE	END CONN.	PRICE	PART NO.
1/2"	Flanged	\$182.55	DAB3005FPK	2-1/2"	Flanged	\$743.65	DAB3025FPK
3/4"	Flanged	\$199.20	DAB3007FPK	3"	Flanged	\$948.05	DAB3030FPK
1"	Flanged	\$294.70	DAB3010FPK	4"	Flanged	\$1,235.85	DAB3040FPK
1-1/4"	Flanged	\$390.15	DAB3012FPK	6"	Flanged	\$3,277.80	DAB3060FPK
1-1/2"	Flanged	\$428.50	DAB3015FPK	8"	Flanged	\$4,955.55	DAB3080FPK
2"	Flanged	\$493.55	DAB3020FPK	10"	Flanged	\$9,720.75	DAB3100FPK

PVDF - PTFE Diaphragm*

Price Code C

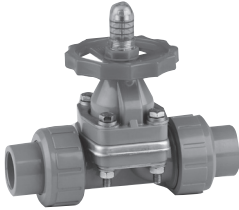
SIZE	END CONN.	PRICE	PART NO.	SIZE	END CONN.	PRICE	PART NO.
1/2"	Flanged	\$329.00	DAB5005FPK	2-1/2"	Flanged	\$1,672.30	DAB5025FPK
3/4"	Flanged	\$375.20	DAB5007FPK	3"	Flanged	\$2,107.35	DAB5030FPK
1"	Flanged	\$547.95	DAB5010FPK	4"	Flanged	\$3,018.25	DAB5040FPK
1-1/2"	Flanged	\$815.05	DAB5015FPK	6"	Flanged	\$7,681.50	DAB5060FPK
2"	Flanged	\$1,026.45	DAB5020FPK	8"	Flanged	\$13,867.40	DAB5080FPK

PVDF/PP - PTFE Diaphragm*

Price Code C

SIZE	END CONN.	PRICE	PART NO.	SIZE	END CONN.	PRICE	PART NO.
1/2"	Flanged	\$278.75	DAB6005FPK	2-1/2"	Flanged	\$1,244.00	DAB6025FPK
3/4"	Flanged	\$315.35	DAB6007FPK	3"	Flanged	\$1,699.45	DAB6030FPK
1"	Flanged	\$435.05	DAB6010FPK	4"	Flanged	\$2,243.30	DAB6040FPK
1-1/2"	Flanged	\$645.75	DAB6015FPK	6"	Flanged	\$6,118.00	DAB6060FPK
2"	Flanged	\$822.60	DAB6020FPK	8"	Flanged	\$10,332.65	DAB6080FPK

* All EPDM and PTFE diaphragms are available with a PVDF vapor barrier, use Suffix A. See page 33 for pricing.
All PTFE diaphragms are EPDM backed. For FPM backed PTFE diaphragms, consult factory.



DAB SERIES DIAPHRAGM VALVES (TRUE UNION)

All DAB Series Diaphragm Valves are assembled with silicone free lubricant and a highly visible, beacon type position indicator.

For Actuator-ready, see Price List ACT-05R.

PVC - FPM Diaphragm - FPM Seals

Price Code C

SIZE	END CONN.	PRICE	PART NO.	SIZE	END CONN.	PRICE	PART NO.
1/2"	Skt/Thd	\$122.25	DAB1005UFF	1-1/4"	Skt/Thd	\$262.80	DAB1012UFF
3/4"	Skt/Thd	\$137.25	DAB1007UFF	1-1/2"	Skt/Thd	\$262.80	DAB1015UFF
1"	Skt/Thd	\$171.60	DAB1010UFF	2"	Skt/Thd	\$311.40	DAB1020UFF

PVC - EPDM Diaphragm* - EPDM Seals

Price Code C

SIZE	END CONN.	PRICE	PART NO.	SIZE	END CONN.	PRICE	PART NO.
1/2"	Skt/Thd	\$97.15	DAB1005UEE	1-1/4"	Skt/Thd	\$210.95	DAB1012UEE
3/4"	Skt/Thd	\$110.45	DAB1007UEE	1-1/2"	Skt/Thd	\$210.95	DAB1015UEE
1"	Skt/Thd	\$137.25	DAB1010UEE	2"	Skt/Thd	\$249.35	DAB1020UEE

PVC - PTFE Diaphragm* - FPM Seals

Price Code C

SIZE	END CONN.	PRICE	PART NO.	SIZE	END CONN.	PRICE	PART NO.
1/2"	Skt/Thd	\$185.90	DAB1005UPF	1-1/4"	Skt/Thd	\$390.15	DAB1012UPF
3/4"	Skt/Thd	\$197.40	DAB1007UPF	1-1/2"	Skt/Thd	\$404.05	DAB1015UPF
1"	Skt/Thd	\$267.85	DAB1010UPF	2"	Skt/Thd	\$479.75	DAB1020UPF

CPVC - FPM Diaphragm - FPM Seals

Price Code C

SIZE	END CONN.	PRICE	PART NO.	SIZE	END CONN.	PRICE	PART NO.
1/2"	Skt/Thd	\$234.35	DAB2005UFF	1-1/4"	Skt/Thd	\$450.60	DAB2012UFF
3/4"	Skt/Thd	\$252.75	DAB2007UFF	1-1/2"	Skt/Thd	\$450.60	DAB2015UFF
1"	Skt/Thd	\$311.40	DAB2010UFF	2"	Skt/Thd	\$489.45	DAB2020UFF

CPVC - EPDM Diaphragm* - EPDM Seals

Price Code C

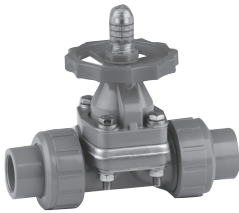
SIZE	END CONN.	PRICE	PART NO.	SIZE	END CONN.	PRICE	PART NO.
1/2"	Skt/Thd	\$179.45	DAB2005UEE	1-1/4"	Skt/Thd	\$381.95	DAB2012UEE
3/4"	Skt/Thd	\$216.00	DAB2007UEE	1-1/2"	Skt/Thd	\$381.95	DAB2015UEE
1"	Skt/Thd	\$237.95	DAB2010UEE	2"	Skt/Thd	\$440.50	DAB2020UEE

CPVC - PTFE Diaphragm* - FPM Seals

Price Code C

SIZE	END CONN.	PRICE	PART NO.	SIZE	END CONN.	PRICE	PART NO.
1/2"	Skt/Thd	\$266.40	DAB2005UPF	1-1/4"	Skt/Thd	\$534.80	DAB2012UPF
3/4"	Skt/Thd	\$283.40	DAB2007UPF	1-1/2"	Skt/Thd	\$539.45	DAB2015UPF
1"	Skt/Thd	\$339.60	DAB2010UPF	2"	Skt/Thd	\$560.05	DAB2020UPF

* All EPDM and PTFE diaphragms are available with a PVDF vapor barrier, use Suffix A. See page 33 for adder.



DAB SERIES DIAPHRAGM VALVES (TRUE UNION)

All DAB Series Diaphragm Valves are assembled with silicone free lubricant and a highly visible, beacon type position indicator.

For Actuator-ready, see Price List ACT-05R.

PP - FPM Diaphragm - FPM Seals

Price Code C

SIZE	END CONN.	PRICE	PART NO.	SIZE	END CONN.	PRICE	PART NO.
1/2"	Skt/Thd	\$122.25	DAB3005UFF	1-1/4"	Skt/Thd	\$262.80	DAB3012UFF
3/4"	Skt/Thd	\$137.25	DAB3007UFF	1-1/2"	Skt/Thd	\$262.80	DAB3015UFF
1"	Skt/Thd	\$171.60	DAB3010UFF	2"	Skt/Thd	\$311.40	DAB3020UFF

PP - EPDM Diaphragm* - EPDM Seals

Price Code C

SIZE	END CONN.	PRICE	PART NO.	SIZE	END CONN.	PRICE	PART NO.
1/2"	Skt/Thd	\$97.15	DAB3005UEE	1-1/4"	Skt/Thd	\$210.95	DAB3012UEE
3/4"	Skt/Thd	\$110.45	DAB3007UEE	1-1/2"	Skt/Thd	\$210.95	DAB3015UEE
1"	Skt/Thd	\$137.25	DAB3010UEE	2"	Skt/Thd	\$249.35	DAB3020UEE

PP - PTFE Diaphragm* - FPM Seals

Price Code C

SIZE	END CONN.	PRICE	PART NO.	SIZE	END CONN.	PRICE	PART NO.
1/2"	Skt/Thd	\$176.70	DAB3005UPF	1-1/4"	Skt/Thd	\$369.60	DAB3012UPF
3/4"	Skt/Thd	\$183.70	DAB3007UPF	1-1/2"	Skt/Thd	\$392.50	DAB3015UPF
1"	Skt/Thd	\$268.50	DAB3010UPF	2"	Skt/Thd	\$447.65	DAB3020UPF

PVDF - PTFE Diaphragm* - FPM Seals

Price Code C

SIZE	END CONN.	PRICE	PART NO.	SIZE	END CONN.	PRICE	PART NO.
1/2"	Skt/Thd	\$327.70	DAB5005UPF	1-1/4"	Skt/Thd	\$810.25	DAB5012UPF
3/4"	Skt/Thd	\$374.55	DAB5007UPF	1-1/2"	Skt/Thd	\$810.25	DAB5015UPF
1"	Skt/Thd	\$546.90	DAB5010UPF	2"	Skt/Thd	\$1,022.40	DAB5020UPF

PTFE - PTFE Diaphragm* - FPM Seals

Price Code C

SIZE	END CONN.	PRICE	PART NO.	SIZE	END CONN.	PRICE	PART NO.
1/2"	Skt/Thd	\$273.30	DAB6005UPF	1-1/4"	Skt/Thd	\$645.75	DAB6012UPF
3/4"	Skt/Thd	\$314.05	DAB6007UPF	1-1/2"	Skt/Thd	\$645.75	DAB6015UPF
1"	Skt/Thd	\$433.75	DAB6010UPF	2"	Skt/Thd	\$826.60	DAB6020UPF

* All EPDM and PTFE diaphragms are available with a PVDF vapor barrier, use Suffix A. See table below.

All PTFE diaphragms are EPDM backed. For FPM backed PTFE diaphragms, consult factory.

PVDF - Vapor Barrier ADDER

Price Code C

SIZE	PRICE	SUFFIX NO.	SIZE	PRICE	SUFFIX NO.
1/2"	\$27.65	A	3"	\$176.30	A
3/4"	\$31.55	A	4"	\$251.25	A
1"	\$46.05	A	5"	\$419.00	A
1-1/4" - 1-1/2"	\$68.40	A	6"	\$640.95	A
2"	\$86.20	A	8"	POA	A
2-1/2"	\$139.10	A	10"	POA	A



RV SERIES PRESSURE RELIEF VALVES

All Pressure Relief Valves can be set from 5-75 PSI* and are assembled with silicone free lubricant.

FPM SEALS

PVC

CPVC

Price Code C

SIZE	END CONN.	PART NO.	PRICE	PART NO.	PRICE
1/2"	Threaded	RV1050T	\$341.80	RV2050T	\$501.10
3/4"	Threaded	RV1075T	\$385.10	RV2075T	\$564.95
1"	Threaded	RV1100T	\$459.60	RV2100T	\$672.65
1-1/2"	Threaded	RV1150T	\$595.40	RV2150T	\$873.05
2"	Threaded	RV1200T	\$703.75	RV2200T	\$1,033.90

* For set pressures below 25 PSI, add "L" to part number for low pressure spring.

**For Valves to have a Preset Pressure, add HC before the part number. List Price Adder of \$100 per valve to set.

EPDM SEALS

PVC

CPVC

Price Code C

SIZE	END CONN.	PART NO.	PRICE	PART NO.	PRICE
1/2"	Threaded	RV1050TE	\$334.05	RV2050TE	\$493.15
3/4"	Threaded	RV1075TE	\$376.10	RV2075TE	\$555.70
1"	Threaded	RV1100TE	\$451.65	RV2100TE	\$655.65
1-1/2"	Threaded	RV1150TE	\$583.10	RV2150TE	\$862.35
2"	Threaded	RV1200TE	\$692.95	RV2200TE	\$1,023.35

* For set pressures below 25 psi, add "L" to part number for low pressure spring.

**For Valves to have a Preset Pressure, add HC before the part number. List Price Adder of \$100 per valve to set.



PR SERIES PRESSURE REGULATOR VALVES

All Pressure Regulators have FPM seals, can be set from 5 to 75 PSI* and are assembled with water soluble, silicone free lubricant.

PVC

CPVC

Price Code C

SIZE	END CONN.	PART NO.	PRICE	PART NO.	PRICE
1/4"	Threaded	PR10025T	\$385.10	PR20025T	\$561.60
1/2"	Threaded	PR10050T	\$423.80	PR20050T	\$631.55
3/4"	Threaded	PR10075T	\$719.35	PR20075T	\$1,003.55
1"	Threaded	PR10100T	\$838.20	PR20100T	\$1,159.45
1-1/2"	Threaded	PR10150T	\$971.15	PR20150T	\$1,336.05

*List Price Adder of \$100 per valve to set.

**For Valves to have a Preset Pressure, add HC before the part number.



AV SERIES ANGLE GLOBE VALVES

All Angle Globe Valves are assembled with silicone free lubricant and have an FPM o-ring seal and seat.

PVC

Price Code B

SIZE	END CONN.	PART NO.	PRICE	SIZE	END CONN.	PART NO.	PRICE
1/4"	Threaded	AV10025T	\$63.75	1"	Threaded	AV10100T	\$131.45
1/2"	Threaded	AV10050T	\$91.25	1-1/2"	Threaded	AV10150T	\$208.70
3/4"	Threaded	AV10075T	\$108.25	2"	Threaded	AV10200T	\$298.50



NVA SERIES NEEDLE VALVES

All Needle Valves are assembled with silicone free lubricant and have an FPM o-ring and a PTFE seat.

PVC

Price Code B

SIZE	END CONN.	PRICE	PART NO.
1/4"	Threaded	\$63.00	NVA1025T
3/8"	Threaded	\$72.70	NVA1037T
1/2"	Threaded	\$72.70	NVA1050T

GFPP

Price Code B

SIZE	END CONN.	PRICE	PART NO.
1/4"	Threaded	\$74.95	NVA4025T
3/8"	Threaded	\$87.90	NVA4037T
1/2"	Threaded	\$87.90	NVA4050T



UNIVERSAL STOPCOCK™

The Universal Stopcock™ has EPDM Seals and is supplied with all the end connectors necessary to make the six different end connection combinations shown below. Universal Stopcock™ is sold in carton quantities only, and is assembled with silicone free lubricant.

Price Code B

SIZE	END CONN.	PRICE*	PART NO.	CTN//QTY.
1/4"	FPT x FPT	\$21.15	LC12	24
	FPT x MPT			
	FPT x HOSE			
	MPT x MPT			
	MPT x HOSE			
	HOSE x HOSE			

*Price is for one stopcock.

Universal Stopcock™ is a trademark of Hayward Industries, Inc.



AR SERIES AIR RELEASE VALVES

Air release valves have FPM seals and are assembled with silicone-free lubricant. They mount to 3/4" threaded pipe for easy installation on to a tank.

Price Code B

SIZE	END CONN.	PRICE	PART NO.
3/4"	Skt./Thd.	\$193.30	AR10075ST



VB SERIES VACUUM BREAKER

Vacuum Breakers have FPM membranes and are assembled with silicone free lubricant. They mount to 3/4" threaded pipe or into the socket connection of a 1-1/2" Hayward Bulkhead Fitting (pages 42 & 43) for easy installation.

Price Code B

SIZE	END CONN.	PRICE	PART NO.
3/4"	Threaded	\$157.75	VB107X15

**“READY FLANGES”***

Easily converts threaded or socket end connections. Conforms to ANSI 150# bolt pattern.

*These flanges convert socket to flanged. For threaded to flanged conversion options, consult factory.

PVC**Price Code C**

SIZE	END CONN.	PRICE	PART NO.	SIZE	END CONN.	PRICE	PART NO.
1"	Flanged	\$19.40	BVX10100PGN	3"	Flanged	\$87.70	BVX10300PGN
1-1/2"	Flanged	\$29.10	BVX10150PGN	4"	Flanged	\$123.35	BVX10400PGN
2"	Flanged	\$35.55	BVX10200PGN				

CPVC**Price Code C**

SIZE	END CONN.	PRICE	PART NO.	SIZE	END CONN.	PRICE	PART NO.
1"	Flanged	\$21.90	BVX90100PGN	3"	Flanged	\$99.95	BVX90300PGN
1-1/2"	Flanged	\$32.85	BVX90150PGN	4"	Flanged	\$140.55	BVX90400PGN
2"	Flanged	\$40.10	BVX90200PGN				

GFPP**Price Code C**

SIZE	END CONN.	PRICE	PART NO.	SIZE	END CONN.	PRICE	PART NO.
1"	Flanged	\$20.55	BVX40100PGN	3"	Flanged	\$94.70	BVX40300PGN
1-1/2"	Flanged	\$30.80	BVX40150PGN	4"	Flanged	\$133.15	BVX40400PGN
2"	Flanged	\$37.65	BVX40200PGN				

**BFAS SERIES
BULKHEAD FITTINGS (SHORT PATTERN)**

Bulkhead Fittings are used to make quick and easy piping connections to tanks.
PVC / EPDM 1/2" - 4" Now NSF/ANSI61 listed.

PVC FPM**Price Code B**

SIZE	END CONN.	PRICE	PART NO.
1/2"	Skt. x Thd.	\$23.00	BFAS1005CFS
	Thd. x Thd.	\$27.20	BFAS1005TFS
3/4"	Skt. x Thd.	\$24.85	BFAS1007CFS
	Thd. x Thd.	\$29.25	BFAS1007TFS
1"	Skt. x Thd.	\$28.45	BFAS1010CFS
	Thd. x Thd.	\$32.95	BFAS1010TFS
1-1/4"	Skt. x Thd.	\$34.05	BFAS1012CFS
	Thd. x Thd.	\$39.85	BFAS1012TFS
1-1/2"	Skt. x Thd.	\$34.05	BFAS1015CFS
	Thd. x Thd.	\$42.60	BFAS1015TFS
2"	Skt. x Thd.	\$56.35	BFAS1020CFS
	Thd. x Thd.	\$64.50	BFAS1020TFS
3"	Skt. x Thd.	\$100.55	BFAS1030CFS
	Thd. x Thd.	\$111.35	BFAS1030TFS
4"	Skt. x Thd.	\$258.85	BFAS1040CFS
	Thd. x Thd.	\$273.60	BFAS1040TFS

PVC EPDM**Price Code B**

SIZE	END CONN.	PRICE	PART NO.
1/2"	Skt. x Thd.	\$14.40	BFAS1005CES
	Thd. x Thd.	\$18.55	BFAS1005TES
3/4"	Skt. x Thd.	\$15.90	BFAS1007CES
	Thd. x Thd.	\$20.35	BFAS1007TES
1"	Skt. x Thd.	\$17.45	BFAS1010CES
	Thd. x Thd.	\$22.05	BFAS1010TES
1-1/4"	Skt. x Thd.	\$23.15	BFAS1012CES
	Thd. x Thd.	\$30.00	BFAS1012TES
1-1/2"	Skt. x Thd.	\$23.15	BFAS1015CES
	Thd. x Thd.	\$31.85	BFAS1015TES
2"	Skt. x Thd.	\$34.55	BFAS1020CES
	Thd. x Thd.	\$42.40	BFAS1020TES
3"	Skt. x Thd.	\$64.70	BFAS1030CES
	Thd. x Thd.	\$75.30	BFAS1030TES
4"	Skt. x Thd.	\$127.30	BFAS1040CES
	Thd. x Thd.	\$142.20	BFAS1040TES



BFAS SERIES BULKHEAD FITTINGS (SHORT PATTERN) cont.

Bulkhead Fittings are used to make quick and easy piping connections to tanks.

CPVC FPM

Price Code B

SIZE	END CONN.	PRICE	PART NO.
1/2"	Skt. x Thd.	\$27.80	BFAS2005CFS
3/4"	Skt. x Thd.	\$31.55	BFAS2007CFS
1"	Skt. x Thd.	\$36.75	BFAS2010CFS
1-1/4"	Skt. x Thd.	\$37.00	BFAS2012CFS
1-1/2"	Skt. x Thd.	\$46.20	BFAS2015CFS
2"	Skt. x Thd.	\$71.80	BFAS2020CFS
3"	Skt. x Thd.	\$124.95	BFAS2030CFS
4"	Skt. x Thd.	\$279.15	BFAS2040CFS

CPVC EPDM

Price Code B

SIZE	END CONN.	PRICE	PART NO.
1/2"	Skt. x Thd.	\$19.20	BFAS2005CES
3/4"	Skt. x Thd.	\$22.75	BFAS2007CES
1"	Skt. x Thd.	\$26.10	BFAS2010CES
1-1/4"	Skt. x Thd.	\$28.40	BFAS2012CES
1-1/2"	Skt. x Thd.	\$35.50	BFAS2015CES
2"	Skt. x Thd.	\$50.20	BFAS2020CES
3"	Skt. x Thd.	\$88.30	BFAS2030CES
4"	Skt. x Thd.	\$148.80	BFAS2040CES

PP FPM

Price Code B

SIZE	END CONN.	PRICE	PART NO.
1/2"	Thd. x Thd.	\$32.90	BFAS3005TFS
3/4"	Thd. x Thd.	\$38.40	BFAS3007TFS
1"	Thd. x Thd.	\$49.30	BFAS3010TFS
1-1/4"	Thd. x Thd.	\$59.75	BFAS3012TFS
1-1/2"	Thd. x Thd.	\$59.75	BFAS3015TFS
2"	Thd. x Thd.	\$97.60	BFAS3020TFS
3"	Thd. x Thd.	\$174.70	BFAS3030TFS
4"	Thd. x Thd.	\$307.70	BFAS3040TFS

PP EPDM

Price Code B

SIZE	END CONN.	PRICE	PART NO.
1/2"	Thd. x Thd.	\$24.95	BFAS3005TES
3/4"	Thd. x Thd.	\$29.85	BFAS3007TES
1"	Thd. x Thd.	\$38.40	BFAS3010TES
1-1/4"	Thd. x Thd.	\$48.90	BFAS3012TES
1-1/2"	Thd. x Thd.	\$48.90	BFAS3015TES
2"	Thd. x Thd.	\$76.00	BFAS3020TES
3"	Thd. x Thd.	\$152.55	BFAS3030TES
4"	Thd. x Thd.	\$285.55	BFAS3040TES



BFA SERIES BULKHEAD FITTINGS STANDARD FLANGE

Bulkhead Fittings are used to make quick and easy piping connections to tanks.

PVC FPM

Price Code B

SIZE	END CONN.	PRICE	PART NO.	SIZE	END CONN.	PRICE	PART NO.
1/2"	Skt. x Thd.	\$23.00	BFA1005CFS	2"	Skt. x Thd.	\$56.35	BFA1020CFS
	Thd. x Thd.	\$27.20	BFA1005TFS		Thd. x Thd.	\$64.50	BFA1020TFS
	Skt. x Skt.	\$23.00	BFA1005SFS		Skt. x Skt.	\$56.35	BFA1020SFS
3/4"	Skt. x Thd.	\$24.85	BFA1007CFS	3"	Skt. x Thd.	\$101.55	BFA1030CFS
	Thd. x Thd.	\$29.25	BFA1007TFS		Thd. x Thd.	\$112.40	BFA1030TFS
	Skt. x Skt.	\$24.85	BFA1007SFS		Skt. x Skt.	\$101.55	BFA1030SFS
1"	Skt. x Thd.	\$28.45	BFA1010CFS	4"	Skt. x Thd.	\$261.35	BFA1040CFS
	Thd. x Thd.	\$32.95	BFA1010TFS		Thd. x Thd.	\$276.25	BFA1040TFS
	Skt. x Skt.	\$28.45	BFA1010SFS		Skt. x Skt.	\$261.35	BFA1040SFS
1-1/4"	Skt. x Thd.	\$34.05	BFA1012CFS	6"	Skt. x Thd.	\$509.00	BFA1060CFS
	Thd. x Thd.	\$39.85	BFA1012TFS		Thd. x Thd.	\$509.00	BFA1060TFS
	Skt. x Skt.	\$34.05	BFA1012SFS		Skt. x Skt.	\$509.00	BFA1060SFS
1-1/2"	Skt. x Thd.	\$34.05	BFA1015CFS				
	Thd. x Thd.	\$42.60	BFA1015TFS				
	Skt. x Skt.	\$34.05	BFA1015SFS				



BFA SERIES BULKHEAD FITTINGS STANDARD FLANGE (cont.)

Bulkhead Fittings are used to make quick and easy piping connections to tanks.

PVC EPDM

Price Code B

SIZE	END CONN.	PRICE	PART NO.	SIZE	END CONN.	PRICE	PART NO.
1/2"	Skt. x Thd.	\$14.40	BFA1005CES	2"	Skt. x Thd.	\$34.55	BFA1020CES
	Thd. x Thd.	\$18.55	BFA1005TES		Thd. x Thd.	\$42.40	BFA1020TES
	Skt. x Skt.	\$14.40	BFA1005SES		Skt. x Skt.	\$34.55	BFA1020SES
3/4"	Skt. x Thd.	\$15.90	BFA1007CES	3"	Skt. x Thd.	\$64.70	BFA1030CES
	Thd. x Thd.	\$20.35	BFA1007TES		Thd. x Thd.	\$75.30	BFA1030TES
	Skt. x Skt.	\$15.90	BFA1007SES		Skt. x Skt.	\$64.70	BFA1030SES
1"	Skt. x Thd.	\$17.45	BFA1010CES	4"	Skt. x Thd.	\$127.30	BFA1040CES
	Thd. x Thd.	\$22.05	BFA1010TES		Thd. x Thd.	\$142.20	BFA1040TES
	Skt. x Skt.	\$17.45	BFA1010SES		Skt. x Skt.	\$126.95	BFA1040SES
1-1/4"	Skt. x Thd.	\$23.15	BFA1012CES	6"	Skt. x Thd.	\$332.55	BFA1060CES
	Thd. x Thd.	\$30.00	BFA1012TES		Thd. x Thd.	\$332.55	BFA1060TES
	Skt. x Skt.	\$23.15	BFA1012SES		Skt. x Skt.	\$332.55	BFA1060SES
1-1/2"	Skt. x Thd.	\$23.15	BFA1015CES				
	Thd. x Thd.	\$31.85	BFA1015TES				
	Skt. x Skt.	\$23.15	BFA1015SES				

PP FPM

Price Code B

SIZE	END CONN.	PRICE	PART NO.	SIZE	END CONN.	PRICE	PART NO.
1/2"	Thd. x Thd.	\$32.90	BFA3005TFS	2"	Thd. x Thd.	\$97.60	BFA3020TFS
3/4"	Thd. x Thd.	\$38.40	BFA3007TFS	3"	Thd. x Thd.	\$174.70	BFA3030TFS
1"	Thd. x Thd.	\$49.30	BFA3010TFS	4"	Thd. x Thd.	\$307.70	BFA3040TFS
1-1/4"	Thd. x Thd.	\$59.75	BFA3012TFS	6"	Thd. x Thd.	\$803.60	BFA3060TFS
1-1/2"	Thd. x Thd.	\$59.75	BFA3015TFS				

PP EPDM

Price Code B

SIZE	END CONN.	PRICE	PART NO.	SIZE	END CONN.	PRICE	PART NO.
1/2"	Thd. x Thd.	\$24.95	BFA3005TES	2"	Thd. x Thd.	\$76.00	BFA3020TES
3/4"	Thd. x Thd.	\$29.85	BFA3007TES	3"	Thd. x Thd.	\$152.55	BFA3030TES
1"	Thd. x Thd.	\$38.40	BFA3010TES	4"	Thd. x Thd.	\$285.55	BFA3040TES
1-1/4"	Thd. x Thd.	\$48.90	BFA3012TES	6"	Thd. x Thd.	\$433.85	BFA3060TES
1-1/2"	Thd. x Thd.	\$48.90	BFA3015TES				



BFA SERIES BULKHEAD FITTINGS STANDARD FLANGE (cont.)

Bulkhead Fittings are used to make quick and easy piping connections to tanks.

CPVC FPM

Price Code B

SIZE	END CONN.	PRICE	PART NO.	SIZE	END CONN.	PRICE	PART NO.
1/2"	Skt. x Thd.	\$27.80	BFA2005CFS	2"	Skt. x Thd.	\$71.80	BFA2020CFS
	Thd. x Thd.	\$34.90	BFA2005TFS		Thd. x Thd.	\$81.05	BFA2020TFS
	Skt. x Skt.	\$27.80	BFA2005SFS		Skt. x Skt.	\$71.80	BFA2020SFS
3/4"	Skt. x Thd.	\$31.55	BFA2007CFS	3"	Skt. x Thd.	\$124.95	BFA2030CFS
	Thd. x Thd.	\$39.25	BFA2007TFS		Thd. x Thd.	\$141.65	BFA2030TFS
	Skt. x Skt.	\$31.55	BFA2007SFS		Skt. x Skt.	\$124.95	BFA2030SFS
1"	Skt. x Thd.	\$36.75	BFA2010CFS	4"	Skt. x Thd.	\$279.15	BFA2040CFS
	Thd. x Thd.	\$41.80	BFA2010TFS		Thd. x Thd.	\$300.30	BFA2040TFS
	Skt. x Skt.	\$36.75	BFA2010SFS		Skt. x Skt.	\$279.15	BFA2040SFS
1-1/4"	Skt. x Thd.	\$46.20	BFA2012CFS	6"	Skt. x Thd.	\$819.05	BFA2060CFS
	Thd. x Thd.	\$62.15	BFA2012TFS		Thd. x Thd.	\$819.05	BFA2060TFS
	Skt. x Skt.	\$46.20	BFA2012SFS		Skt. x Skt.	\$819.05	BFA2060SFS
1-1/2"	Skt. x Thd.	\$46.20	BFA2015CFS				
	Thd. x Thd.	\$62.15	BFA2015TFS				
	Skt. x Skt.	\$46.20	BFA2015SFS				

CPVC EPDM

Price Code B

SIZE	END CONN.	PRICE	PART NO.	SIZE	END CONN.	PRICE	PART NO.
1/2"	Skt. x Thd.	\$19.20	BFA2005CES	2"	Skt. x Thd.	\$50.20	BFA2020CES
	Thd. x Thd.	\$24.25	BFA2005TES		Thd. x Thd.	\$59.75	BFA2020TES
	Skt. x Skt.	\$19.20	BFA2005SES		Skt. x Skt.	\$50.20	BFA2020SES
3/4"	Skt. x Thd.	\$22.75	BFA2007CES	3"	Skt. x Thd.	\$88.30	BFA2030CES
	Thd. x Thd.	\$28.30	BFA2007TES		Thd. x Thd.	\$103.00	BFA2030TES
	Skt. x Skt.	\$22.75	BFA2007SES		Skt. x Skt.	\$88.30	BFA2030SES
1"	Skt. x Thd.	\$26.10	BFA2010CES	4"	Skt. x Thd.	\$148.80	BFA2040CES
	Thd. x Thd.	\$31.20	BFA2010TES		Thd. x Thd.	\$163.60	BFA2040TES
	Skt. x Skt.	\$26.10	BFA2010SES		Skt. x Skt.	\$148.80	BFA2040SES
1-1/4"	Skt. x Thd.	\$35.50	BFA2012CES	6"	Skt. x Thd.	\$442.20	BFA2060CES
	Thd. x Thd.	\$47.85	BFA2012TES		Thd. x Thd.	\$442.20	BFA2060TES
	Skt. x Skt.	\$35.50	BFA2012SES		Skt. x Skt.	\$442.20	BFA2060SES
1-1/2"	Skt. x Thd.	\$35.50	BFA2015CES				
	Thd. x Thd.	\$47.85	BFA2015TES				
	Skt. x Skt.	\$35.50	BFA2015SES				



BFA SERIES BULKHEAD FITTINGS LARGE FLANGE

Bulkhead Fittings are used to make quick and easy piping connections to tanks.

PVC FPM

SIZE	END CONN.	PRICE	PART NO.
1/2"	Skt. x Thd.	\$29.05	BFA1005CFL
	Thd. x Thd.	\$29.05	BFA1005TFL
	Skt. x Skt.	\$29.05	BFA1005SFL
3/4"	Skt. x Thd.	\$31.25	BFA1007CFL
	Thd. x Thd.	\$31.25	BFA1007TFL
	Skt. x Skt.	\$31.25	BFA1007SFL
1"	Skt. x Thd.	\$35.15	BFA1010CFL
	Thd. x Thd.	\$35.15	BFA1010TFL
	Skt. x Skt.	\$35.15	BFA1010SFL

PVC EPDM

Price Code B

SIZE	END CONN.	PRICE	PART NO.
1/2"	Skt. x Thd.	\$19.70	BFA1005CEL
	Thd. x Thd.	\$19.70	BFA1005TEL
	Skt. x Skt.	\$19.70	BFA1005SEL
3/4"	Skt. x Thd.	\$21.70	BFA1007CEL
	Thd. x Thd.	\$21.70	BFA1007TEL
	Skt. x Skt.	\$21.70	BFA1007SEL
1"	Skt. x Thd.	\$23.55	BFA1010CEL
	Thd. x Thd.	\$23.55	BFA1010TEL
	Skt. x Skt.	\$23.55	BFA1010SEL

CPVC FPM

SIZE	END CONN.	PRICE	PART NO.
1/2"	Skt. x Thd.	\$38.45	BFA2005CFL
	Thd. x Thd.	\$38.45	BFA2005TFL
	Skt. x Skt.	\$38.45	BFA2005SFL
3/4"	Skt. x Thd.	\$43.15	BFA2007CFL
	Thd. x Thd.	\$43.15	BFA2007TFL
	Skt. x Skt.	\$43.15	BFA2007SFL
1"	Skt. x Thd.	\$46.05	BFA2010CFL
	Thd. x Thd.	\$46.05	BFA2010TFL
	Skt. x Skt.	\$46.05	BFA2010SFL

CPVC EPDM

Price Code B

SIZE	END CONN.	PRICE	PART NO.
1/2"	Skt. x Thd.	\$26.70	BFA2005CEL
	Thd. x Thd.	\$26.70	BFA2005TEL
	Skt. x Skt.	\$26.70	BFA2005SEL
3/4"	Skt. x Thd.	\$31.10	BFA2007CEL
	Thd. x Thd.	\$31.10	BFA2007TEL
	Skt. x Skt.	\$31.10	BFA2007SEL
1"	Skt. x Thd.	\$34.40	BFA2010CEL
	Thd. x Thd.	\$34.40	BFA2010TEL
	Skt. x Skt.	\$34.40	BFA2010SEL

PP FPM

SIZE	END CONN.	PRICE	PART NO.
1/2"	Thd. x Thd.	\$35.05	BFA3005TFL
3/4"	Thd. x Thd.	\$41.00	BFA3007TFL
1"	Thd. x Thd.	\$52.60	BFA3010TFL

PP EPDM

Price Code B

SIZE	END CONN.	PRICE	PART NO.
1/2"	Thd. x Thd.	\$26.70	BFA3005TEL
3/4"	Thd. x Thd.	\$31.90	BFA3007TEL
1"	Thd. x Thd.	\$41.00	BFA3010TEL



CCP SERIES TANK-TITE™*

Tank-Tite™ compression rings are PVC and are used to provide a constant load on the gasket of the bulkhead fitting. Works with BFAS & BFA Series, all material types.

PVC

Price Code B

SIZE	DESCRIPTION	PRICE	PART NO.
1/2"	Compression Ring with 17-7 Spring	\$17.25	CCP1005
3/4"	Compression Ring with 17-7 Spring	\$20.15	CCP1007
1"	Compression Ring with 17-7 Spring	\$21.35	CCP1010
1-1/4" - 1-1/2"	Compression Ring with 17-7 Spring	\$31.00	CCP1015
2"	Compression Ring with 17-7 Spring	\$35.65	CCP1020
3"	Compression Ring with 17-7 Spring	\$57.85	CCP1030

*Bulkhead Fitting must be purchased separately.



SF SERIES SELF-ALIGNING BULKHEAD FITTINGS

Self-aligning Bulkhead Fittings are used to make piping connections to the top of domed tanks. Made with EPDM gaskets; for FPM, consult factory.

PVC

Price Code C

SIZE	END CONN.	PRICE	PART NO.
1"	Flanged	\$110.25	SF10100T
2"	Flanged	\$167.35	SF10200T
3"	Flanged	\$259.10	SF10300T

GG SERIES GAUGES AND GUARDS



GAUGE GUARD ONLY - NO GAUGE INSTALLED

All Gauge Guards have an FPM diaphragm and are rated to 150 PSI at 70 °F.

Price Code B

SIZE	MATERIAL	PRICE	PART NO.
1/4" X 1/4"	PVC	\$75.80	GG125X25
1/4" X 1/2"	PVC	\$75.80	GG125X50
1/4" X 1/4'	CPVC	\$89.55	GG225X25
1/4" x 1/2"	CPVC	\$89.55	GG225X50
1/4" x 1/4"	PP	\$105.75	GG3025X25
1/4" x 1/2"	PVDF	\$118.15	GG5025X50



GAUGE GUARD WITH STANDARD GAUGE* INSTALLED

Price Code B

SIZE	MATERIAL	GAUGE	PRICE	PART NO.
1/4" X 1/4"	PVC	0 to 30 PSI	\$120.70	GG125X25030
1/4" X 1/4"	PVC	0 to 60 PSI	\$120.70	GG125X25060
1/4" X 1/4'	PVC	0 to 160 PSI	\$120.70	GG125X25160
1/4" x 1/2"	PVC	0 to 30 PSI	\$120.70	GG125X50030
1/4" x 1/2"	PVC	0 to 60 PSI	\$120.70	GG125X50060
1/4" x 1/2"	PVC	0 to 160 PSI	\$120.70	GG125X50160
1/4" X 1/4"	CPVC	0 to 30 PSI	\$135.05	GG225X25030
1/4" X 1/4"	CPVC	0 to 60 PSI	\$135.05	GG225X25060
1/4" X 1/4'	CPVC	0 to 160 PSI	\$135.05	GG225X25160
1/4" x 1/2"	CPVC	0 to 30 PSI	\$135.05	GG225X50030
1/4" x 1/2"	CPVC	0 to 60 PSI	\$135.05	GG225X50060
1/4" x 1/2"	CPVC	0 to 160 PSI	\$135.05	GG225X50160
1/4" X 1/4"	PP	0 to 30 PSI	\$138.50	GG303025
1/4" X 1/4"	PP	0 to 60 PSI	\$138.50	GG306025
1/4" X 1/4'	PP	0 to 160 PSI	\$138.50	GG316025
1/4" X 1/2"	PVDF	0 to 160 PSI	\$152.80	GG516050

*Shipped assembled: Gauge (not liquid-filled) is attached to Guard which is filled with hydraulic fluid.

GG SERIES GAUGES AND GUARDS (cont.)



STANDARD GAUGES ONLY

Gauges are dual faced (PSI & kg/cm²) and are available in three different PSI ratings.

Price Code B

SIZE	GAUGE	PRICE	PART NO.
2"	0 to 30 PSI	\$36.80	GG030DUAL
2"	0 to 60 PSI	\$36.80	GG060DUAL
2'	0 to 160 PSI	\$42.70	GG160DUAL



GAUGE GUARD W/STAINLESS STEEL LIQUID FILLED GAUGE* INSTALLED

Price Code B

SIZE	MATERIAL	GAUGE	PRICE	PART NO.
1/4" X 1/4"	PVC	0 to 160 PSI	\$152.00	GG125X25160SL
1/4" X 1/2"	PVC	0 to 160 PSI	\$152.00	GG125X50160SL
1/4" X 1/4'	CPVC	0 to 160 PSI	\$165.75	GG225X25160SL
1/4" x 1/2"	CPVC	0 to 160 PSI	\$165.75	GG225X50160SL
1/4" x 1/4"	PP	0 to 160 PSI	\$168.60	GG316025SL
1/4" x 1/2"	PVDF	0 to 160 PSI	\$184.60	GG516050SL

*Shipped assembled: Gauge (Glycerin-filled) is attached to Guard (filled with hydraulic fluid).



STAINLESS STEEL LIQUID FILLED GAUGES ONLY

Gauge has stainless steel housing and is liquid-filled. Gauge face shows dual rating of PSI and kg/cm². Available in 160 PSI only.

Price Code B

SIZE	GAUGE	PRICE	PART NO.
2-1/2"	0 to 160 PSI	\$77.00	GG160DUALFILL



TBB SERIES TRUE UNION BALL VALVES

All TBB Series True Union Ball Valves have PTFE seats and are cost effective, yet rugged enough to stand up to the most demanding applications.

PVC FPM O-RINGS

Price Code R

SIZE	END CONN.	PRICE	PART NO.	CTN./QTY.	SIZE	END CONN.	PRICE	PART NO.	CTN./QTY.
1/2"	Skt/Thd	\$52.95	TBB1005CPFG	48	2"	Skt/Thd	\$147.30	TBB1020CPFG	12
	Flanged	\$88.95	TBB1005FPFG	48		Flanged	\$247.60	TBB1020FPFG	12
3/4"	Skt/Thd	\$59.55	TBB1007CPFG	36	2-1/2"	Socket	\$294.45	TBB1025SPFG	12
	Flanged	\$100.10	TBB1007FPFG	36		Threaded	\$294.45	TBB1025TPFG	12
1"	Skt/Thd	\$69.45	TBB1010CPFG	24		Flanged	\$494.70	TBB1025FPFG	12
	Flanged	\$116.70	TBB1010FPFG	24	3"	Socket	\$365.65	TBB1030SPFG	6
1-1/4"	Skt/Thd	\$100.95	TBB1012CPFG	24		Threaded	\$365.65	TBB1030TPFG	6
	Flanged	\$169.65	TBB1012FPFG	24		Flanged	\$614.35	TBB1030FPFG	6
1-1/2"	Skt/Thd	\$110.95	TBB1015CPFG	24	4"	Socket	\$732.85	TBB1040SPFG	1
	Flanged	\$186.30	TBB1015FPFG	24		Threaded	\$732.85	TBB1040TPFG	1
						Flanged	\$1,231.10	TBB1040FPFG	1

PVC EPDM O-RINGS

Price Code R

SIZE	END CONN.	PRICE	PART NO.	CTN./QTY.	SIZE	END CONN.	PRICE	PART NO.	CTN./QTY.
1/2"	Skt/Thd	\$44.70	TBB1005CPEG	48	2"	Skt/Thd	\$137.45	TBB1020CPEG	12
	Flanged	\$71.55	TBB1005FPEG	48		Flanged	\$219.90	TBB1020FPEG	12
3/4"	Skt/Thd	\$49.60	TBB1007CPEG	36	2-1/2"	Socket	\$258.15	TBB1025SPEG	12
	Flanged	\$79.35	TBB1007FPEG	36		Threaded	\$258.15	TBB1025TPEG	12
1"	Skt/Thd	\$59.55	TBB1010CPEG	24		Flanged	\$412.95	TBB1025FPEG	12
	Flanged	\$95.35	TBB1010FPEG	24	3"	Socket	\$312.80	TBB1030SPEG	6
1-1/4"	Skt/Thd	\$86.05	TBB1012CPEG	24		Threaded	\$312.80	TBB1030TPEG	6
	Flanged	\$137.65	TBB1012FPEG	24		Flanged	\$500.35	TBB1030FPEG	6
1-1/2"	Skt/Thd	\$100.95	TBB1015CPEG	24	4"	Socket	\$550.85	TBB1040SPEG	1
	Flanged	\$161.50	TBB1015FPEG	24		Threaded	\$550.85	TBB1040TPEG	1
						Flanged	\$881.35	TBB1040FPEG	1

CPVC FPM O-RINGS

Price Code R

SIZE	END CONN.	PRICE	PART NO.	CTN./QTY.	SIZE	END CONN.	PRICE	PART NO.	CTN./QTY.
1/2"	Skt/Thd	\$74.65	TBB2005CPFG	48	2"	Skt/Thd	\$253.05	TBB2020CPFG	12
	Flanged	\$129.20	TBB2005FPFG	48		Flanged	\$437.80	TBB2020FPFG	12
3/4"	Skt/Thd	\$90.15	TBB2007CPFG	36	2-1/2"	Socket	\$535.65	TBB2025SPFG	12
	Flanged	\$156.00	TBB2007FPFG	36		Threaded	\$535.65	TBB2025TPFG	12
1"	Skt/Thd	\$114.40	TBB2010CPFG	24		Flanged	\$926.70	TBB2025FPFG	12
	Flanged	\$197.95	TBB2010FPFG	24	3"	Socket	\$738.30	TBB2030SPFG	6
1-1/4"	Skt/Thd	\$166.30	TBB2012CPFG	24		Threaded	\$738.30	TBB2030TPFG	6
	Flanged	\$287.70	TBB2012FPFG	24		Flanged	\$1,277.30	TBB2030FPFG	6
1-1/2"	Skt/Thd	\$187.15	TBB2015CPFG	24	4"	Socket	\$1,246.10	TBB2040SPFG	1
	Flanged	\$323.90	TBB2015FPFG	24		Threaded	\$1,246.10	TBB2040TPFG	1
						Flanged	\$2,155.75	TBB2040FPFG	1



TBB SERIES TRUE UNION BALL VALVES (cont.)

All TBB Series True Union Ball Valves have PTFE seats and are cost effective, yet rugged enough to stand up to the most demanding applications.

CPVC EPDM O-RINGS

Price Code R

SIZE	END CONN.	PRICE	PART NO.	CTN./QTY.	SIZE	END CONN.	PRICE	PART NO.	CTN./QTY.
1/2"	Skt/Thd	\$62.35	TBB2005CPEG	48	2"	Skt/Thd	\$209.85	TBB2020CPEG	12
	Flanged	\$103.60	TBB2005FPEG	48		Flanged	\$348.35	TBB2020FPEG	12
3/4"	Skt/Thd	\$74.65	TBB2007CPEG	36	2-1/2"	Socket	\$447.15	TBB2025SPEG	12
	Flanged	\$123.90	TBB2007FPEG	36		Threaded	\$447.15	TBB2025TPEG	12
1"	Skt/Thd	\$93.70	TBB2010CPEG	24		Flanged	\$742.15	TBB2025FPEG	12
	Flanged	\$155.45	TBB2010FPEG	24	3"	Socket	\$617.05	TBB2030SPEG	6
1-1/4"	Skt/Thd	\$138.65	TBB2012CPEG	24		Threaded	\$617.05	TBB2030TPEG	6
	Flanged	\$230.10	TBB2012FPEG	24		Flanged	\$1,024.20	TBB2030FPEG	6
1-1/2"	Skt/Thd	\$156.05	TBB2015CPEG	24	4"	Socket	\$1,039.90	TBB2040SPEG	1
	Flanged	\$259.00	TBB2015FPEG	24		Threaded	\$1,039.90	TBB2040TPEG	1
						Flanged	\$1,726.20	TBB2040FPEG	1

PP FPM O-RINGS

Price Code R

SIZE	END CONN.	PRICE	PART NO.	CTN./QTY.	SIZE	END CONN.	PRICE	PART NO.	CTN./QTY.
1/2"	Threaded	\$71.55	TBB3005TPFG	48	2"	Threaded	\$224.20	TBB3020TPFG	12
	Flanged	\$121.70	TBB3005FPFG	48		Flanged	\$381.00	TBB3020FPFG	12
3/4"	Threaded	\$84.00	TBB3007TPFG	36	2-1/2"	Threaded	\$464.25	TBB3025TPFG	12
	Flanged	\$142.75	TBB3007FPFG	36		Flanged	\$789.30	TBB3025FPFG	12
1"	Threaded	\$102.95	TBB3010TPFG	24	3"	Threaded	\$616.70	TBB3030TPFG	6
	Flanged	\$175.00	TBB3010FPFG	24		Flanged	\$1,048.60	TBB3030FPFG	6
1-1/4"	Threaded	\$149.60	TBB3012TPFG	24	4"	Threaded	\$1,107.65	TBB3040TPFG	1
	Flanged	\$254.45	TBB3012FPFG	24		Flanged	\$1,882.95	TBB3040FPFG	1
1-1/2"	Threaded	\$166.85	TBB3015TPFG	24					
	Flanged	\$283.60	TBB3015FPFG	24					

PP EPDM O-RINGS

Price Code R

SIZE	END CONN.	PRICE	PART NO.	CTN./QTY.	SIZE	END CONN.	PRICE	PART NO.	CTN./QTY.
1/2"	Threaded	\$60.05	TBB3005TPEG	48	2"	Threaded	\$194.70	TBB3020TPEG	12
	Flanged	\$99.75	TBB3005FPEG	48		Flanged	\$323.05	TBB3020FPEG	12
3/4"	Threaded	\$69.60	TBB3007TPEG	36	2-1/2"	Threaded	\$394.65	TBB3025TPEG	12
	Flanged	\$115.55	TBB3007FPEG	36		Flanged	\$655.10	TBB3025FPEG	12
1"	Threaded	\$85.85	TBB3010TPEG	24	3"	Threaded	\$519.60	TBB3030TPEG	6
	Flanged	\$142.50	TBB3010FPEG	24		Flanged	\$862.45	TBB3030FPEG	6
1-1/4"	Threaded	\$125.90	TBB3012TPEG	24	4"	Threaded	\$889.35	TBB3040TPEG	1
	Flanged	\$208.85	TBB3012FPEG	24		Flanged	\$1,476.25	TBB3040FPEG	1
1-1/2"	Threaded	\$144.00	TBB3015TPEG	24					
	Flanged	\$239.05	TBB3015FPEG	24					



TBB SERIES TRUE UNION BALL VALVES cont.

All TBB Series True Union Ball Valves have PTFE seats and are cost effective, yet rugged enough to stand up to the most demanding industrial & commercial applications.

PVDF FPM O-RINGS

Price Code R

SIZE	END CONN.	PRICE	PART NO.	CTN./QTY.	SIZE	END CONN.	PRICE	PART NO.	CTN./QTY.
1/2"	Threaded	\$250.05	TBB5005TPFW	48	2"	Threaded	\$1,315.70	TBB5020TPFW	12
	Flanged	\$507.80	TBB5005FPFW	48		Flanged	\$2,105.20	TBB5020FPFW	12
3/4"	Threaded	\$326.25	TBB5007TPFW	36	2-1/2"	Threaded	\$1,795.95	TBB5025TPFW	12
	Flanged	\$731.50	TBB5007FPFW	36		Flanged	\$3,552.40	TBB5025FPFW	12
1"	Threaded	\$414.50	TBB5010TPFW	24	3"	Threaded	\$2,434.05	TBB5030TPFW	6
	Flanged	\$828.95	TBB5010FPFW	24		Flanged	\$3,790.10	TBB5030FPFW	6
1-1/4"	Threaded	\$546.05	TBB5012TPFW	24	4"	Threaded	\$2,845.85	TBB5040TPFW	1
	Flanged	\$1,143.40	TBB5012FPFW	24		Flanged	\$4,999.70	TBB5040FPFW	1
1-1/2"	Threaded	\$934.15	TBB5015TPFW	24					
	Flanged	\$1,578.90	TBB5015FPFW	24					



QVC SERIES COMPACT BALL VALVES

All QVC Series Compact Ball Valves have EPDM o-rings and Santoprene (TPV) seats. Order quantity by bag only.

PVC GRAY

Price Code R

SIZE	END CONN.	PRICE	PART NO.	CTN./QTY.	SIZE	END CONN.	PRICE	PART NO.	CTN./QTY.
1/2"	Socket	\$2.90	QVC1005SSEG	10	2"	Socket	\$15.30	QVC1020SSEG	5
	Threaded	\$2.90	QVC1005TSEG	10		Threaded	\$15.30	QVC1020TSEG	5
3/4"	Socket	\$3.95	QVC1007SSEG	10	2-1/2"	Socket	\$51.05	QVC1025SSEG	12*
	Threaded	\$3.95	QVC1007TSEG	10		Threaded	\$51.05	QVC1025TSEG	12*
1"	Socket	\$6.10	QVC1010SSEG	10	3"	Socket	\$81.70	QVC1030SSEG	8*
	Threaded	\$6.10	QVC1010TSEG	10		Threaded	\$81.70	QVC1030TSEG	8*
1-1/4"	Socket	\$8.40	QVC1012SSEG	10	4"	Socket	\$148.00	QVC1040SSEG	6*
	Threaded	\$8.40	QVC1012TSEG	10		Threaded	\$148.00	QVC1040TSEG	6*
1-1/2"	Socket	\$10.40	QVC1015SSEG	5	*2-1/2" and up are Carton Quantities				
	Threaded	\$10.40	QVC1015TSEG	5					



QVC SERIES COMPACT BALL VALVES (cont.)

All QVC Series Compact Ball Valves have EPDM o-rings and Santoprene (TPV) seats. Order quantity by bag only.

PVC WHITE

Price Code R

SIZE	END CONN.	PRICE	PART NO.	BAG/QTY.	SIZE	END CONN.	PRICE	PART NO.	BAG/QTY.
1/2"	Socket	\$2.90	QVC1005SSEW	10	2"	Socket	\$15.30	QVC1020SSEW	5
	Threaded	\$2.90	QVC1005TSEW	10		Threaded	\$15.30	QVC1020TSEW	5
3/4"	Socket	\$3.95	QVC1007SSEW	10	2-1/2"	Socket	\$51.05	QVC1025SSEW	12*
	Threaded	\$3.95	QVC1007TSEW	10		Threaded	\$51.05	QVC1025TSEW	12*
1"	Socket	\$6.10	QVC1010SSEW	10	3"	Socket	\$81.70	QVC1030SSEW	8*
	Threaded	\$6.10	QVC1010TSEW	10		Threaded	\$81.70	QVC1030TSEW	8*
1-1/4"	Socket	\$8.40	QVC1012SSEW	10	4"	Socket	\$148.00	QVC1040SSEW	6*
	Threaded	\$8.40	QVC1012TSEW	10		Threaded	\$148.00	QVC1040TSEW	6*
1-1/2"	Socket	\$10.40	QVC1015SSEW	5					
	Threaded	\$10.40	QVC1015TSEW	5					

*2-1/2" and up are Carton Quantities



QTA SERIES TRUE UNION COMPACT BALL VALVES

All QTA Series True Union Compact Ball Valves have EPDM o-rings and Santoprene (TPV) seats.

PVC GRAY

Price Code R

SIZE	END CONN.	PRICE	PART NO.	CTN./QTY.
1/2"	Skt/Thd	\$8.70	QTA1005CSEG	200
3/4"	Skt/Thd	\$12.00	QTA1007CSEG	160
1"	Skt/Thd	\$18.60	QTA1010CSEG	96
1-1/4"	Skt/Thd	\$26.05	QTA1012CSEG	72
1-1/2"	Skt/Thd	\$32.95	QTA1015CSEG	45
2"	Skt/Thd	\$48.90	QTA1020CSEG	36

PVC WHITE

Price Code R

SIZE	END CONN.	PRICE	PART NO.	CTN./QTY.
1/2"	Skt/Thd	\$8.70	QTA1005CSEW	200
3/4"	Skt/Thd	\$12.00	QTA1007CSEW	160
1"	Skt/Thd	\$18.60	QTA1010CSEW	96
1-1/4"	Skt/Thd	\$26.05	QTA1012CSEW	72
1-1/2"	Skt/Thd	\$32.95	QTA1015CSEW	45
2"	Skt/Thd	\$48.90	QTA1020CSEW	36

TB SERIES TRUE UNION BALL VALVE PARTS***PVC****Price Code B**

SIZE	ASSEMBLY NUT		END CONNECTION				SEAL RETAINER	
			Socket or Threaded**		Flanged with Assembly Nut			
	PART NO.	PRICE	PART NO.	PRICE	PART NO.	PRICE	PART NO.	PRICE
1/4"	TUX1052	\$10.45	TUX100254S/T	\$10.45	NA	-	SRX15	\$5.60
3/8"	TUX1052	\$10.45	TUX100374S/T	\$10.45	NA	-	SRX15	\$5.60
1/2"	TUX1052	\$10.45	ECX15S/ECX15T	\$10.45	TUX100504F	\$31.30	SRX15	\$5.60
3/4"	TBX10752	\$12.20	ECX17S/ECX17T	\$11.70	NA	-	SRX17	\$6.65
1"	TBX11002	\$12.20	ECX11S/ECX11T	\$13.50	TUX101004F	\$82.45	SRX11	\$6.65
1-1/4"	TBX11502	\$17.35	ECX112S/ECX112T	\$20.20	TUX101254F	\$82.45	SRX115	\$10.55
1-1/2"	TBX11502	\$17.35	ECX115S/ECX115T	\$21.85	TUX101504F	\$89.60	SRX115	\$10.55
2"	TBX122	\$21.85	ECX12S/ECX12T	\$28.55	TUX102004F	\$132.90	SRX12002	\$12.50
3"	TBX132	\$50.45	ECX13S/ECX13T	\$64.40	TUX103004F	\$191.80	SRX13	\$38.65
4"	TBX142	\$111.05	ECX14S/ECS14T	\$126.15	TUX104004F	\$381.80	SRX14	\$87.50

SIZE	BALL, STEM & HANDLE KIT***		HANDLE		TFE Seat & FPM Seal Repair Kit***	
	PART NO.	PRICE	PART NO.	PRICE	PART NO.	PRICE
1/4"	TBX1050PAK	\$19.15	HLX23	\$13.20	TBX050PAK	\$20.60
3/8"	TBX1050PAK	\$19.15	HLX23	\$13.20	TBX050PAK	\$20.60
1/2"	TBX1050PAK	\$19.15	HLX23	\$13.20	TBX050PAK	\$20.60
3/4"	TBX1075PAK	\$20.20	HLX23	\$13.20	TBX075PAK	\$24.00
1"	TBX1100PAK	\$26.15	HLX24	\$15.70	TBX100PAK	\$28.55
1-1/4"	TBX1150PAK	\$31.95	HLX22	\$15.70	TBX150PAK	\$38.65
1-1/2"	TBX1150PAK	\$31.95	HLX22	\$15.70	TBX150PAK	\$38.65
2"	TBX1200PAK	\$47.10	HLX22	\$15.70	TBX200PAK	\$52.15
3"	TBX1300PAK	\$136.25	TBX138	\$26.90	TBX300PAK	\$87.00
4"	TBX1400PAK	\$186.80	TBX148	\$26.90	TBX400PAK	\$185.55

* Metric part numbers available, consult factory.

** S suffix for Socket; T suffix for Threaded.

***To order EPDM kits, add E to the end of the part number.

CPVC**Price Code B**

SIZE	ASSEMBLY NUT		END CONNECTION				SEAL RETAINER	
			Socket or Threaded*		Flanged with Assembly Nut			
	PART NO.	PRICE	PART NO.	PRICE	PART NO.	PRICE	PART NO.	PRICE
1/2"	TUX9052	\$10.90	ECX95S/ECX95T	\$15.70	NA	-	SRX95	\$8.40
3/4"	TUX90752	\$12.85	ECX97S/ECX97T	\$17.85	NA	-	SRX97	\$10.05
1 "	TBX91002	\$12.85	ECX91S/ECX91T	\$20.20	TUX901004F	\$108.00	SRX91	\$10.05
1-1/4"	TBX91502	\$25.90	ECX912S/ECX912T	\$32.45	TUX901254F	\$124.45	SRX915	\$16.10
1-1/2"	TBX91502	\$25.90	ECX915S/ECX915T	\$32.45	TUX901504F	\$146.35	SRX915	\$16.10
2"	TBX922	\$32.45	ECX92S/ECX92T	\$42.45	TUX902004F	\$190.15	SRX92002	\$18.80
3"	TBX932	\$73.90	ECX93S/ECX93T	\$104.30	TUX903004F	\$291.55	SRX93	\$58.30
4"	TBX942	\$166.50	ECX94S/ECX94T	\$192.55	TUX904004F	\$583.15	SRX94	\$133.50

SIZE	BALL, STEM & HANDLE KIT**		HANDLE		TFE Seat & FPM Seal Repair Kit**	
	PART NO.	PRICE	PART NO.	PRICE	PART NO.	PRICE
1/2"	TBX2050PAK	\$28.55	HLX23	\$13.20	TBX050PAK	\$20.60
3/4"	TBX2075PAK	\$30.25	HLX23	\$13.20	TBX075PAK	\$24.00
1"	TBX2100PAK	\$38.65	HLX24	\$15.70	TBX100PAK	\$28.55
1-1/4"	TBX2125PAK	\$45.40	HLX22	\$15.70	TBX150PAK	\$38.65
1-1/2"	TBX2150PAK	\$48.80	HLX22	\$15.70	TBX150PAK	\$38.65
2"	TBX2200PAK	\$70.60	HLX22	\$15.70	TBX200PAK	\$52.15
3"	TBX2300PAK	\$205.20	TBX138	\$26.90	TBX300PAK	\$87.00
4"	TBX2400PAK	\$279.25	TBX148	\$26.90	TBX400PAK	\$185.55

* S suffix for Socket; T suffix for Threaded.

** To order EPDM kits add the letter "E" to the end of the part number.

TB SERIES TRUE UNION BALL VALVE PARTS (cont.)

PP

Price Code B

SIZE	ASSEMBLY NUT		END CONNECTION		SEAL RETAINER		BALL, STEM & HANDLE KIT*		HANDLE		TFE Seat & FPM Seal Repair Kit*	
			Threaded									
	PART NO.	PRICE	PART NO.	PRICE	PART NO.	PRICE	PART NO.	PRICE	PART NO.	PRICE	PART NO.	PRICE
1/2"	TUX300502	\$9.45	ECX35T	\$13.50	SRX35	\$7.10	TBX30050PAK	\$24.85	HLX9	\$13.20	TBX0050PAK	\$20.60
3/4"	TUX3052	\$11.30	ECX37T	\$15.55	SRXP5	\$8.70	TBX30075PAK	\$26.65	HLX9	\$13.20	TBX0075PAK	\$24.00
1"	TUX301002	\$11.30	ECX31T	\$17.70	SRX31	\$8.70	TBX30100PAK	\$34.05	HLX15	\$15.70	TBX0100PAK	\$28.55
1-1/2"	TUX401502	\$22.50	ECX415T	\$28.15	SRX415	\$13.65	TBX40150PAK	\$41.95	HLX15	\$15.70	TBX0150PAK	\$38.65
2"	TBX402002	\$28.05	ECX42T	\$36.75	SRX42	\$16.25	TBX40200PAK	\$62.20	HLX16	\$15.70	TBX0200PAK	\$52.15

* To order EPDM kits add the letter "E" to the end of the part number.

PARTS

TW SERIES TRUE UNION 3-WAY BALL VALVE PARTS

PVC

Price Code B

SIZE	ASSEMBLY NUT		END CONNECTION						BALL, STEM & HANDLE KIT**	
			Socket		Threaded		Flanged with Assembly Nut			
	PART NO.	PRICE	PART NO.	PRICE	PART NO.	PRICE	PART NO.	PRICE	PART NO.	PRICE
1/2"	TUX1052	\$10.45	ECX15S	\$10.45	ECX15T	\$10.45	TUX100504F	\$53.20	TWX15PAK	\$51.90
3/4"	TBX10752	\$8.70	ECX17S	\$11.70	ECX17T	\$11.70	TUX100754F	\$86.45	TWX17PAK	\$56.55
1"	TBX11002	\$12.30	ECX11S	\$13.50	ECX11T	\$13.50	TUX101004F	\$82.45	TWX11PAK	\$66.45
1-1/4"	TBX122	\$21.85	SBX1EC12S	\$32.20	SBX1EC12T	\$32.20	TUX101254F	\$82.45	TWX12PAK	\$75.50
1-1/2"	TBX122	\$21.85	SBX1EC15S	\$26.80	SBX1EC15T	\$26.80	TUX101504F	\$89.60	TWX12PAK	\$75.50
2"	TBX122	\$21.85	ECX12S	\$28.55	ECX12T	\$28.55	TUX102004F	\$132.90	TWX12PAK	\$75.50
2-1/2"	BVX103002	\$38.55	ECX125S	\$66.00	ECX125T	\$66.00	TUX102504F	\$136.80	TWX13PAK	\$213.80
3"	BVX103002	\$38.55	ECX13S	\$64.40	ECX13T	\$64.40	TUX103004F	\$191.80	TWX13PAK	\$213.80
4"	TBX142	\$45.40	ECX14S	\$126.15	ECX14T	\$126.25	TUX104004F	\$381.80	TWX14PAK	\$271.85
	BSX142*	\$66.00	ECX14SBS*	\$100.60	ECX14TBS*	\$100.60	LAX144F	\$381.80		
6"							TUX106004F	\$432.25	TWX14PAK	\$271.85
							LAX164F	\$432.25		

SIZE	HANDLE		TN OR NT STYLE BALL ONLY		TFE Seat & FPM Seal Repair Kit**		TFE Seat & EPDM Seal Repair Kit**	
	PART NO.	PRICE	PART NO.	PRICE	PART NO.	PRICE	PART NO.	PRICE
1/2"	HLX23	\$13.20	NTX100503B	\$58.90	LAX5PAK	\$13.75	LAX5PAKE	\$10.50
3/4"	HLX23	\$13.20	NTX100753B	\$79.35	LAX7PAK	\$14.25	LAX7PAKE	\$10.90
1"	TWX1HL1	\$15.70	NTX101003B	\$123.60	LAX1PAK	\$14.25	LAX1PAKE	\$11.45
1-1/4"	TWX1HL2M	\$15.70	NTX102003B	\$183.45	LAX2PAK	\$20.45	LAX2PAKE	\$16.30
1-1/2"	TWX1HL2M	\$15.70	NTX102003B	\$183.45	LAX2PAK	\$20.45	LAX2PAKE	\$16.30
2"	TWX1HL2M	\$15.70	NTX102003B	\$183.45	LAX2PAK	\$20.45	LAX2PAKE	\$16.30
2-1/2"	LAX1HL3	\$47.20	NTX103003B	\$249.20	LAX3PAK	\$61.25	LAX3PAKE	\$37.10
3"	LAX1HL3	\$47.20	NTX103003B	\$249.20	LAX3PAK	\$61.25	LAX3PAKE	\$37.10
4"	LAX1HL4	\$51.90	NTX104003B	\$557.25	LAX4PAK	\$96.15	LAX4PAKE	\$62.90
6"	LAX1HL4	\$51.90	NTX104003B	\$557.25	LAX4PAK	\$96.15	LAX4PAK	\$62.90

* Required for 3rd port.

** Includes o-ring for duplex lateral valve repair.

TW SERIES TRUE UNION 3-WAY BALL VALVE PARTS (cont.)

CPVC

Price Code B

SIZE	ASSEMBLY NUT		END CONNECTION						BALL, STEM & HANDLE KIT**	
			Socket		Threaded		Flanged with Assembly Nut			
	PART NO.	PRICE	PART NO.	PRICE	PART NO.	PRICE	PART NO.	PRICE	PART NO.	PRICE
1/2"	TUX9052	\$10.90	ECX95S	\$15.70	ECX95T	\$15.70	TUX900504F	\$86.45	TWX25PAK	\$35.10
3/4"	TBX90752	\$12.85	ECX97S	\$17.85	ECX97T	\$17.85	TUX900754F	\$86.45	TWX27PAK	\$37.10
1"	TBX91002	\$12.85	ECX91S	\$20.20	ECX91T	\$20.20	TUX901004F	\$108.00	TWX21PAK	\$57.85
1-1/4"	TBX922	\$32.45	SBX9EC12S	\$51.90	SBX9EC12T	\$91.15	TUX901254F	\$124.45	TWX22PAK	\$195.25
1-1/2"	TBX922	\$32.45	SBX9EC15S	\$51.90	SBX9EC15T	\$91.15	TUX901504F	\$146.35	TWX22PAK	\$195.25
2"	TBX922	\$32.45	ECX92S	\$42.45	ECX92T	\$42.45	TUX902004F	\$190.15	TWX22PAK	\$195.25
2-1/2"	BVX903002	\$59.75	ECX925S	\$90.95	ECX925T	\$90.95	TUX902504F	\$215.35	TWX23PAK	\$301.05
3"	BVX903002	\$59.75	ECX93S	\$104.30	ECX93T	\$104.30	TUX903004F	\$291.55	TWX23PAK	\$301.05
4"	TBX942	\$66.60	ECX94S	\$166.05	ECX94T	\$166.05	TUX904004F	\$583.15	TWX24PAK	\$694.70
	BSX942*	\$84.80	ECX94SBS*	\$110.45	ECX94TBS*	\$110.45	LAX944F	\$583.15		
6"							TUX906004F	\$663.30	TWX24PAK	\$694.70
							LAX964F	\$663.30		

SIZE	HANDLE		TN OR NT STYLE BALL ONLY		TFE Seat & FPM Seal Repair Kit**		TFE Seat & EPDM Seal Repair Kit**	
	PART NO.	PRICE	PART NO.	PRICE	PART NO.	PRICE	PART NO.	PRICE
1/2"	HLX23	\$13.20	NTX900503B	\$88.05	LAX5PAK	\$13.75	LAX5PAKE	\$10.50
3/4"	HLX23	\$13.20	NTX900753B	\$118.65	LAX7PAK	\$14.25	LAX7PAKE	\$10.90
1"	TWX1HL1	\$15.70	NTX901003B	\$185.00	LAX1PAK	\$14.25	LAX1PAKE	\$11.45
1-1/4"	TWX1HL2M	\$15.70	NTX902003B	\$275.85	LAX2PAK	\$20.45	LAX2PAKE	\$16.30
1-1/2"	TWX1HL2M	\$15.70	NTX902003B	\$275.85	LAX2PAK	\$20.45	LAX2PAKE	\$16.30
2"	TWX1HL2M	\$15.70	NTX902003B	\$275.85	LAX2PAK	\$20.45	LAX2PAKE	\$16.30
2-1/2"	LAX1HL3	\$47.20	NTX903003B	\$373.45	LAX3PAK	\$61.25	LAX3PAKE	\$37.10
3"	LAX1HL3	\$47.20	NTX903003B	\$373.45	LAX3PAK	\$61.25	LAX3PAKE	\$37.10
4"	LAX1HL4	\$51.90	NTX904003B	\$836.20	LAX4PAK	\$96.15	LAX4PAKE	\$62.90
6"	LAX1HL4	\$51.90	NTX904003B	\$836.20	LAX4PAK	\$96.15	LAX4PAK	\$62.90

* Required for 3rd port.

** Includes o-ring for duplex lateral valve repair.

LA SERIES LATERAL 3-WAY BALL VALVE PARTS

PVC

Price Code B

SIZE	ASSEMBLY NUT		FRONT ASSEMBLY NUT		END CONNECTION					
					Socket		Threaded		Flanged with Assembly Nut	
	PART NO.	PRICE			PART NO.	PRICE	PART NO.	PRICE	PART NO.	PRICE
1/2"	TBX10752	\$8.70			ECX15S	\$15.70	ECX15T	\$10.45	TUX100504F	\$53.20
3/4"	TBX10752	\$8.70			ECX17S	\$11.70	ECX17T	\$11.70	TUX100754F	\$86.45
1"	TBX11002	\$8.70			ECX11S	\$13.50	ECX11T	\$13.50	TUX101004F	\$82.45
1-1/4"	TBX122	\$21.85			SBX1EC12S	\$32.20	SBX1EC12T	\$32.20	TUX101254F	\$82.45
1-1/2"	TBX122	\$21.85			SBX1EC15S	\$26.80	SBX1EC15T	\$26.80	TUX101504F	\$89.60
2"	TBX122	\$21.85			ECX12S	\$28.55	ECX12T	\$28.55	TUX102004F	\$132.90
2-1/2"	BVX10300V	\$38.55			ECX125S	\$66.00	ECX125T	\$66.00	TUX102504F	\$136.80
3"	TBX142	\$45.60			ECX13S	\$64.40	ECX13T	\$64.40	TUX103004F	\$191.80
4"	BSX142*	\$66.00			ECX14S	\$68.20	ECX14T	\$68.20	TUX104004F	\$381.80
					ECX14SBS*	\$100.60	ECX14TBS*	\$100.60	LAX144F	\$381.80
6"			BSX142*	\$66.00					TUX106004F	\$432.25
									LAX164F	\$432.25

PARTS

SIZE	BALL, STEM & HANDLE KIT**		HANDLE		STANDARD 180° BALL		STANDARD 90° BALL	
	PART NO.	PRICE	PART NO.	PRICE	PART NO.	PRICE	PART NO.	PRICE
1/2"	LAX15PAK	\$80.25	HLX23	\$13.20	LAX1BL5	\$64.75	NA	-
3/4"	LAX17PAK	\$94.25	HLX23	\$13.20	LAX1BL7	\$79.35	NA	-
1"	LAX11PAK	\$109.30	HLX24	\$15.70	LAX1BL1	\$80.95	LAX1TN1	\$80.95
1-1/4"	LAX12PAK	\$120.25	HLX22	\$15.70	LAX1BL2	\$84.80	LAX1TN2	\$84.80
1-1/2"	LAX12PAK	\$120.25	HLX23	\$13.20	LAX1BL2	\$84.80	LAX1TN2	\$84.80
2"	LAX12PAK	\$109.30	LAX1HL2	\$15.70	LAX1BL2	\$84.80	LAX1TN2	\$84.80
2-1/2"	LAX13PAK	\$183.15	LAX1HL3	\$47.20	LAX1BL3	\$99.05	LAX1TN3	\$99.05
3"	LAX13PAK	\$183.15	LAX1HL3	\$47.20	LAX1BL3	\$99.05	LAX1TN3	\$99.05
4"	LAX14PAK	\$360.05	LAX1HL4	\$51.90	LAX1BL4	\$216.90	LAX1TN4	\$216.90
6"	LAX14PAK	\$360.05	LAX1HL4	\$51.90	LAX1BL4	\$216.90	LAX1TN4	\$216.90

SIZE	TFE Seat & FPM Seal Repair Kit**		TFE Seat & EPDM Seal Repair Kit**	
	PART NO.	PRICE	PART NO.	PRICE
1/2"	LAX5PAK	\$13.75	LAX5PAKE	\$10.50
3/4"	LAX7PAK	\$14.25	LAX7PAKE	\$10.90
1"	LAX1PAK	\$14.25	LAX1PAKE	\$11.45
1-1/4"	LAX2PAK	\$20.45	LAX2PAKE	\$16.30
1-1/2"	LAX2PAK	\$20.45	LAX2PAKE	\$16.30
2"	LAX2PAK	\$20.45	LAX2PAKE	\$16.30
2-1/2"	LAX3PAK	\$61.25	LAX3PAKE	\$37.10
3"	LAX3PAK	\$61.25	LAX3PAKE	\$37.10
4"	LAX4PAK	\$96.15	LAX4PAKE	\$62.90
6"	LAX4PAK	\$96.15	LAX4PAKE	\$62.90

* Required for 3rd port.

** Includes o-ring for duplex lateral valve repair.

LA SERIES LATERAL 3-WAY BALL VALVE PARTS (cont.)

CPVC

Price Code B

SIZE	ASSEMBLY NUT		FRONT ASSEMBLY NUT		END CONNECTION					
					Socket		Threaded		Flanged with Assembly Nut	
	PART NO.	PRICE			PART NO.	PRICE	PART NO.	PRICE	PART NO.	PRICE
1/2"	TUX9052	\$10.90			ECX95S	\$15.70	ECX95T	\$15.70	TUX900504F	\$86.45
3/4"	TBX90752	\$12.85			ECX97S	\$17.85	ECX97T	\$17.85	TUX900754F	\$86.45
1"	TBX91002	\$12.85			ECX91S	\$20.20	ECX91T	\$20.20	TUX901004F	\$108.00
1-1/4"	TBX922	\$32.45			SBX9EC12S	\$51.90	SBX9EC12T	\$91.15	TUX901254F	\$124.45
1-1/2"	TBX922	\$32.45			SBX9EC15S	\$51.90	SBX9EC15T	\$91.15	TUX901504F	\$146.35
2"	TBX922	\$32.45			ECX92S	\$42.45	ECX92T	\$42.45	TUX902004F	\$190.15
2-1/2"	BVX903002	\$59.75			ECX925S	\$90.95	ECX925T	\$90.95	TUX902504F	\$215.35
3"	BVX903002	\$59.75			ECX93S	\$104.30	ECX93T	\$104.30	TUX903004F	\$291.55
4"	TBX942	\$66.60			ECX94S	\$166.05	ECX94T	\$166.05	TUX904004F	\$583.15
					ECX94SBS*	\$110.45	ECX94TBS*	\$110.45	LAX944F	\$583.15
6"			BSX942*	\$84.80					TUX906004F	\$663.30
									LAX964F	\$663.30

SIZE	BALL, STEM & HANDLE KIT**		HANDLE		STANDARD 180° BALL		STANDARD 90° BALL	
	PART NO.	PRICE	PART NO.	PRICE	PART NO.	PRICE	PART NO.	PRICE
1/2"	LAX25PAK	\$90.50	HLX23	\$13.20	LAX9BL5	\$75.50	NA	-
3/4"	LAX27PAK	\$98.25	HLX23	\$13.20	LAX9BL7	\$86.45	NA	-
1"	LAX21PAK	\$73.85	HLX24	\$15.70	LAX9BL1	\$97.40	LAX9TN1	\$97.40
1-1/4"	LAX22PAK	\$134.65	HLX22	\$15.70	LAX9BL2	\$106.85	LAX9TN2	\$106.85
1-1/2"	LAX22PAK	\$134.65	HLX23	\$13.20	LAX9BL2	\$106.85	LAX9TN2	\$106.85
2"	LAX22PAK	\$134.65	LAX1HL2	\$15.70	LAX9BL2	\$106.85	LAX9TN2	\$106.85
2-1/2"	LAX23PAK	\$286.15	LAX1HL3	\$47.20	LAX9BL3	\$215.35	LAX9TN3	\$215.35
3"	LAX23PAK	\$286.15	LAX1HL3	\$47.20	LAX9BL3	\$215.35	LAX9TN3	\$215.35
4"	LAX24PAK	\$347.45	LAX1HL4	\$51.90	LAX9BL4	\$227.90	LAX9TN4	\$227.90
6"	LAX24PAK	\$347.45	LAX1HL4	\$51.90	LAX9BL4	\$227.90	LAX9TN4	\$227.90

SIZE	TFE Seat & FPM Seal Repair Kit**		TFE Seat & EPDM Seal Repair Kit**	
	PART NO.	PRICE	PART NO.	PRICE
1/2"	LAX5PAK	\$13.75	LAX5PAKE	\$10.50
3/4"	LAX7PAK	\$14.25	LAX7PAKE	\$10.90
1"	LAX1PAK	\$14.25	LAX1PAKE	\$11.45
1-1/4"	LAX2PAK	\$20.45	LAX2PAKE	\$16.30
1-1/2"	LAX2PAK	\$20.45	LAX2PAKE	\$16.30
2"	LAX2PAK	\$20.45	LAX2PAKE	\$16.30
2-1/2"	LAX3PAK	\$61.25	LAX3PAKE	\$37.10
3"	LAX3PAK	\$61.25	LAX3PAKE	\$37.10
4"	LAX4PAK	\$96.15	LAX4PAKE	\$62.90
6"	LAX4PAK	\$96.15	LAX4PAKE	\$96.15

* Required for 3rd port.

** Includes o-ring for duplex lateral valve repair.

TC SERIES TRUE UNION BALL CHECK VALVE PARTS

If required part is not listed below, refer to part list for True Union Ball Valves.

PVC

Price Code B

SIZE	BALL		FPM Seat & Seal REPAIR KIT		EPDM Seat & Seal REPAIR KIT	
	PART NO.	PRICE	PART NO.	PRICE	PART NO.	PRICE
1/2"	TCX100503	\$6.10	TCX0050PAK	\$18.60	TCX0050PAKE	\$14.95
3/4"	TCX100753	\$11.85	TCX0075PAK	\$22.90	TCX0075PAKE	\$18.05
1"	TCX101003	\$13.95	TCX0100PAK	\$25.25	TCX0100PAKE	\$20.20
1-1/4"	TCX101253	\$17.45	TCX0125PAK	\$30.25	TCX0125PAKE	\$24.30
1-1/2"	TCX101503	\$19.55	TCX0150PAK	\$36.95	TCX0150PAKE	\$29.55
2"	TCX102003	\$54.90	TCX0200PAK	\$47.85	TCX0200PAKE	\$38.45
2-1/2"	TCX103003	\$103.30	TCX300PAK	\$73.75	TCX300PAKE	\$58.85
3"	TCX103003	\$103.30	TCX300PAK	\$73.75	TCX300PAKE	\$58.85
4"	TCX104003	\$429.15	TCX400PAK	\$130.70	TCX400PAKE	\$104.30

CPVC

Price Code B

SIZE	BALL		FPM Seat & Seal REPAIR KIT		EPDM Seat & Seal REPAIR KIT	
	PART NO.	PRICE	PART NO.	PRICE	PART NO.	PRICE
1/2"	TCX200503	\$9.20	TCX0050PAK	\$18.60	TCX0050PAKE	\$14.95
3/4"	TCX200753	\$17.85	TCX0075PAK	\$22.90	TCX0075PAKE	\$18.05
1"	TCX201003	\$21.10	TCX0100PAK	\$25.25	TCX0100PAKE	\$20.20
1-1/4"	TCX201503	\$29.55	TCX0125PAK	\$30.25	TCX0125PAKE	\$24.30
1-1/2"	TCX201503	\$29.55	TCX0150PAK	\$36.95	TCX0150PAKE	\$29.55
2"	TCX202003	\$82.45	TCX0200PAK	\$47.85	TCX0200PAKE	\$38.45
3"	TCX903003	\$154.90	TCX300PAK	\$73.75	TCX300PAKE	\$58.85
4"	TCX204003	\$646.05	TCX400PAK	\$130.70	TCX400PAKE	\$104.30

PP

Price Code B

SIZE	BALL		FPM Seat & Seal REPAIR KIT		EPDM Seat & Seal REPAIR KIT	
	PART NO.	PRICE	PART NO.	PRICE	PART NO.	PRICE
1/2"	TCX400503	\$7.85	TCX0050PAK	\$18.60	TCX0050PAKE	\$14.95
3/4"	TCX400753	\$15.55	TCX0075PAK	\$22.90	TCX0075PAKE	\$18.05
1"	TCX401003	\$18.20	TCX0100PAK	\$25.25	TCX0100PAKE	\$20.20
1-1/2"	TCX401503	\$25.60	TCX0150PAK	\$36.95	TCX0150PAKE	\$29.55
2"	TCX402003	\$71.50	TCX0200PAK	\$47.85	TCX0200PAKE	\$38.45

YC SERIES Y-CHECK VALVE PARTS**PVC****Price Code B**

SIZE	CAP		DISC		COIL		FPM Seal REPAIR KIT	
	PART NO.	PRICE	PART NO.	PRICE	PART NO.	PRICE	PART NO.	PRICE
1/2"	YCX1005013	\$19.15	YCX1005012	\$18.35	YCX1005014	\$7.75	YCX0050PK	\$4.90
3/4"	YCX1007513	\$23.75	YCX1007512	\$22.90	YCX1007514	\$10.55	YCX0075PK	\$4.90
1"	YCX1010013	\$30.65	YCX1010012	\$29.55	YCX1010014	\$13.30	YCX0100PK	\$6.65
1-1/4"	YCX1015013	\$38.35	YCX1015012	\$36.95	YCX1015014	\$15.15	YCX0150PK	\$8.85
1-1/2"	YCX1015013	\$38.35	YCX1015012	\$36.95	YCX1015014	\$15.15	YCX0150PK	\$8.85
2"	YCX1020013	\$51.75	YCX1020012	\$50.30	YCX1020014	\$73.90	YCX0200PK	\$18.20
3"	YCX1030013	\$99.00	YCX1030012	\$95.35	YCX1030014	\$104.05	YCX0300PK	\$32.35
4"	YCX1040013	\$134.40	YCX1040012	\$129.55	YCX1040014	\$130.00	YCX0400PK	\$67.45

*For CPVC Consult Factory

SW SERIES SWING CHECK VALVE PARTS**Price Code B**

	3"		4"		6"		8"	
	PART NO.	PRICE	PART NO.	PRICE	PART NO.	PRICE	PART NO.	PRICE
FPM Seat O-Ring Kit	SW300PAKV	\$136.35	SW400PAKV	\$181.70	SW600PAKV	\$209.10	SW800PAKV	\$232.80
EPDM Seat O-Ring Kit	SW300PAKE	\$92.05	SW400PAKE	\$145.45	SW600PAKE	\$167.35	SW800PAKE	\$185.50
FPM Flange O-Ring Seal	ORX339V70	\$38.45	ORX347V70	\$38.45	ORX363V70	\$51.70	ORX371V70	\$51.70
EPDM Flange O-Ring Seal	ORX339E70	\$30.65	ORX347E70	\$30.65	ORX363E70	\$39.85	ORX371E70	\$39.85
FPM Clapper O-Ring Seal	SWXV36	\$69.00	SWXV46	\$72.70	SWXV66	\$78.10	SWXV86	\$81.90
EPDM Clapper O-Ring Seal	SWXE36	\$54.60	SWXE46	\$58.15	SWXE66	\$61.85	SWXE86	\$65.45
PVC Counterweight Kit	SW13CKIT	\$227.35	SW14CKIT	\$227.35	SW16CKIT	\$227.35	SW18CKIT	\$227.35
PP Counterweight Kit	SW43CKIT	\$227.35	SW44CKIT	\$227.35	SW46CKIT	\$363.65	SW48CKIT	\$454.50

*For CPVC Consult Factory

SLC SERIES SPRING-LOADED Y-CHECK VALVES**Price Code B**

	SEAL KITS				SPRINGS	
SIZE	FPM		EPDM			
	PART NO.	PRICE	PART NO.	PRICE	PART NO.	PRICE
1"	SLC1PAKV	\$27.15	SLC1PAKE	\$19.10	YRXSPR100	\$6.70
2"	SLC2PAKV	\$32.65	SLC2PAKE	\$23.65	YRXSPR200	\$17.70
3"	SLC3PAKV	\$40.05	SLC3PAKE	\$28.85	YRXSPR300	\$71.10
4"	SLC4PAKV	\$50.95	SLC4PAKE	\$36.35	YRXSPR400	\$121.30

Price Code B**BY SERIES BUTTERFLY VALVE PARTS****LINER & SEAL KITS**

SIZE	HANDLE		PVC DISC		FPM		EPDM		NITRILE	
	PART NO.	PRICE	PART NO.	PRICE	PART NO.	PRICE	PART NO.	PRICE	PART NO.	PRICE
2"	LEX3A	\$112.55	BYX122	\$61.55	BYXV2KIT	\$333.25	BYXE2KIT	\$83.65	BYXN2KIT	\$83.65
3"	LEX3A	\$112.55	BYX132	\$68.30	BYXV3KIT	\$396.15	BYXE3KIT	\$93.05	BYXN3KIT	\$93.05
4"	LEX4A	\$117.75	BYX142	\$87.60	BYXV4KIT	\$454.30	BYXE4KIT	\$129.10	BYXN4KIT	\$129.10
6"	LEX6A	\$134.35	BYX162	\$129.10	BYXV6KIT	\$575.30	BYXE6KIT	\$164.20	BYXN6KIT	\$164.20
8"	LEX8A	\$161.55	BYX182	\$175.20	BYXV8KIT	\$954.20	BYXE8KIT	\$259.05	BYXN8KIT	\$259.05
10"	NA	-	NA	-	BYXV10KIT	\$1,579.75	BYXE10KIT	\$521.45	BYXN10KIT	\$521.45
12"	NA	-	NA	-	NA	-	NA	-	NA	-

*For PVC / CPVC Consult Factory

RV SERIES RELIEF VALVE PARTS**Price Code B**

SIZE	PVC* SPRING		FPM SEAT & SEAL KIT		EPDM SEAT & SEAL KIT		PISTON		ADJUSTMENT SCREW	
	PART NO.	PRICE	PART NO.	PRICE	PART NO.	PRICE	PART NO.	PRICE	PART NO.	PRICE
1/2"	PRX00751B	\$142.10	RVX0050PAK	\$28.05	RVX0050PAKE	\$22.65	RVX105023	\$56.40	RVX1005018	\$42.35
3/4"	RVX007515B	\$142.10	RVX0075PAK	\$33.90	RVX0075PAKE	\$28.05	RVX1007523	\$70.55	RVX1007518	\$56.40
1"	RVX010015B	\$142.10	RVX0100PAK	\$42.35	RVX0100PAKE	\$33.90	RVX1010023	\$98.75	RVX1010018	\$70.55
1-1/2"	RVX015015B	\$170.05	RVX0150PAK	\$56.40	RVX0150PAKE	\$45.00	RVX1015023	\$125.90	RVX1015018	\$85.10
2"	RVX020015B	\$183.65	RVX0200PAK	\$70.55	RVX0200PAKE	\$56.40	RVX1020023	\$156.05	RVX10020018	\$112.35

*CPVC, consult factory

PR SERIES PRESSURE REGULATOR PARTS**Price Code B**

SIZE	PVC* SPRING**		FPM*** SEAT & SEAL KIT		STEM		PISTON	
	PART NO.	PRICE	PART NO.	PRICE	PART NO.	PRICE	PART NO.	PRICE
1/4"	RVX010015B	\$142.10	PRX0075PAK	\$72.70	PRX100755	\$117.75	PRX1007523	\$63.15
1/2"	RVX010015B	\$142.10	PRX0075PAK	\$72.70	PRX100755	\$117.75	PRX1007523	\$63.15
3/4"	RVX010015B	\$142.10	PRX0075PAK	\$72.70	PRX100755	\$107.05	PRX1007523	\$63.15
1"	PRX015015B	\$169.95	PRX0150PAK	\$97.50	PRX101505	\$183.45	PRX1015023	\$117.75
1-1/2"	PRX015015B	\$169.95	PRX0150PAK	\$97.50	PRX101505	\$183.45	PRX1015023	\$117.75

* CPVC, consult factory.

** Spring Part # is for a KYNAR® coated spring. Kynar® is a registered trademark of Arkema, Inc.

*** EPDM, consult factory.

AV SERIES ANGLE (GLOBE) PARTS**Price Code B**

SIZE	FPM* SEAT & SEAL KIT	
	PART NO.	PRICE
1/4"	AVX0025PAK	\$20.40
1/2"	AVX0050PAK	\$21.60
3/4"	AVX0075PAK	\$21.80
1"	AVX0100PAK	\$24.00
1-1/2"	AVX0150PAK	\$26.20
2"	AVX0200PAK	\$29.85

* EPDM, consult factory.

DAB SERIES DIAPHRAGM VALVE PARTS - DIAPHRAGMS**Price Code B**

SIZE	MATERIAL	PRICE	PART NO.
1/2"	FPM	\$59.80	DVBXV053
3/4"	FPM	\$68.80	DVBXV073
1"	FPM	\$82.10	DVBXV103
1-1/4"	FPM	\$157.75	DVBXV123
1-1/2"	FPM	\$157.75	DVBXV153
2"	FPM	\$185.35	DVBXV203
2-1/2"	FPM	\$252.20	DVBXV253
3"	FPM	\$347.70	DVBXV303
4"	FPM	\$438.95	DVBXV403
6"	FPM	\$1,373.15	DVBXV603
8"	FPM	\$1,753.70	DVBXV803
10"	FPM	\$4,210.75	DVBXV1003

Price Code B

SIZE	MATERIAL	PRICE	PART NO.
1/2"	EPDM	\$28.55	DVBXE053
3/4"	EPDM	\$33.70	DVBXE073
1"	EPDM	\$43.55	DVBXE103
1-1/4"	EPDM	\$85.85	DVBXE123
1-1/2"	EPDM	\$85.85	DVBXE153
2"	EPDM	\$98.50	DVBXE203
2-1/2"	EPDM	\$140.60	DVBXE253
3"	EPDM	\$189.05	DVBXE303
4"	EPDM	\$247.85	DVBXE403
6"	EPDM	\$724.35	DVBXE603
8"	EPDM	\$1,164.10	DVBXE803
10"	EPDM	\$3,183.85	DVBXE1003

DAB SERIES DIAPHRAGM VALVE PARTS - DIAPHRAGMS**Price Code B**

SIZE	MATERIAL	PRICE	PART NO.
1/2"	PTFE	\$74.65	DVBXT053
3/4"	PTFE	\$84.65	DVBXT073
1"	PTFE	\$106.90	DVBXT103
1-1/4"	PTFE	\$186.55	DVBXT123
1-1/2"	PTFE	\$186.55	DVBXT153
2"	PTFE	\$223.95	DVBXT203
2-1/2"	PTFE	\$338.25	DVBXT253
3"	PTFE	\$403.00	DVBXT303
4"	PTFE	\$502.50	DVBXT403
6"	PTFE	\$1,701.45	DVBXT603
8"	PTFE	\$2,014.75	DVBXT803
10"	PTFE	\$4,537.00	DVBXT1003

DAB SERIES DIAPHRAGM VALVE PARTS**Price Code B**

SIZE	PVC END CONNECTORS			PVC ASSEMBLY NUT	
		PRICE	PART NO.	PRICE	PART NO.
1/2"	Socket	\$9.50	DAXBEC1050S	\$9.50	DABXNUT1050
	Threaded	\$9.50	DAXBEC1050T		
3/4"	Socket	\$9.50	DAXBEC1075S	\$7.90	DABXNUT1075
	Threaded	\$9.50	DAXBEC1075T		
1"	Socket	\$10.65	DAXBEC1100S	\$7.90	DABXNUT1100
	Threaded	\$10.65	DAXBEC1100T		
1-1/4"	Socket	\$12.25	DAXBEC1125S	\$15.75	DABXNUT1125
	Threaded	\$12.25	DAXBEC1125T		
1-1/2"	Socket	\$18.35	DAXBEC1150S	\$19.85	DABXNUT1150
	Threaded	\$18.35	DAXBEC1150T		
2"	Socket	\$19.85	DAXBEC1200S	\$45.85	DABXNUT1200
	Threaded	\$19.85	DAXBEC1200T		

Price Code B

SIZE	CPVC END CONNECTORS			CPVC ASSEMBLY NUT	
		PRICE	PART NO.	PRICE	PART NO.
1/2"	Socket	\$14.25	DAXBEC2050S	\$9.90	DABXNUT2050
	Threaded	\$14.25	DAXBEC2050T		
3/4"	Socket	\$16.25	DAXBEC2075S	\$11.70	DABXNUT2075
	Threaded	\$16.25	DAXBEC2075T		
1"	Socket	\$18.35	DAXBEC2100S	\$11.70	DABXNUT2100
	Threaded	\$18.35	DAXBEC2100T		
1-1/4"	Socket	\$29.50	DAXBEC2125S	\$23.55	DABXNUT2125
	Threaded	\$29.50	DAXBEC2125T		
1-1/2"	Socket	\$29.50	DAXBEC2150S	\$23.55	DABXNUT2150
	Threaded	\$29.50	DAXBEC2150T		
2"	Socket	\$38.60	DAXBEC2200S	\$29.50	DABXNUT2200
	Threaded	\$38.60	DAXBEC2200T		

Price Code B

SIZE	PVDF END CONNECTORS			PVDF ASSEMBLY NUT	
		PRICE	PART NO.	PRICE	PART NO.
1/2"	Threaded	\$14.30	DAXBEC5050T	\$11.40	DABXNUT5050
3/4"	Threaded	\$16.45	DAXBEC5075T	\$13.50	DABXNUT5075
1"	Threaded	\$18.70	DAXBEC5100T	\$13.50	DABXNUT5100
1-1/4"	Threaded	\$29.70	DAXBEC5125T	\$27.05	DABXNUT5125
1-1/2"	Threaded	\$29.70	DAXBEC5150T	\$27.05	DABXNUT5150
2"	Threaded	\$38.80	DAXBEC5200T	\$33.95	DABXNUT5200

DAB SERIES DIAPHRAGM VALVE PARTS**Price Code B**

SIZE	PP END CONNECTORS			PP ASSEMBLY NUT	
		PRICE	PART NO.	PRICE	PART NO.
1/2"	Threaded	\$12.25	DAXBEC3050T	\$9.90	DABXNUT3050
3/4"	Threaded	\$14.15	DAXBEC3075T	\$11.70	DABXNUT3075
1"	Threaded	\$16.10	DAXBEC3100T	\$11.70	DABXNUT3100
1-1/4"	Threaded	\$25.60	DAXBEC3125T	\$23.55	DABXNUT3125
1-1/2"	Threaded	\$25.60	DAXBEC3150T	\$23.55	DABXNUT3150
2"	Threaded	\$33.40	DAXBEC3200T	\$29.50	DABXNUT3200

Price Code B

ACRYLLIC CAP REPLACEMENT		
SIZE	PRICE	PART NO.
1/2"	\$28.50	DAXBCAP125
3/4"	\$28.50	DAXBCAP125
1"	\$28.50	DAXBCAP125
1-1/4"	\$28.50	DAXBCAP125
1-1/2"	\$28.50	DAXBCAP20
2"	\$28.50	DAXBCAP20
2-1/2"	\$36.30	DAXBCAP25
3"	\$44.00	DAXBCAP30
4"	\$61.10	DAXBCAP40
6"	\$115.65	DAXBCAP60
8"	\$215.15	DAXBCAP80

SV SERIES SOLENOID VALVE REPLACEMENT PARTS**Price Code C**

PART NO.	DESCRIPTION	PRICE
SVX1VCART	PVC Cartridge & FPM Seal Kit for 1/4" - 1/2" NPD Solenoid Valve	\$149.65
SVX1ECART	PVC Cartridge & EPDM Seal Kit for 1/4" - 1/2" NPD Solenoid Valve	\$141.30
SVX2VCART	CPVC Cartridge & FPM Seal Kit for 1/4" - 1/2" NPD Solenoid Valve	\$149.65
SVX2ECART	CPVC Cartridge & EPDM Seal Kit for 1/4" - 1/2" NPD Solenoid Valve	\$159.85
SVX452B	Bonnet Nut Replacement for 1/4" - 1/2" NPD Solenoid Valve	\$35.25
SVX5BCOIL120A	Coil 120 Volt Bonnet, Nut & Clip Replacement for 1/4" - 1/2" NPD Solenoid Valve	\$279.25
SVX5BCOIL220A	Coil 220 Volt Bonnet, Nut & Clip Replacement for 1/4" - 1/2" NPD Solenoid Valve	\$455.80
SVX5BCOIL12A/D	Coil 12 VAC or 12 VDC Bonnet, Nut & Clip Replacement for 1/4" - 1/2" NPD Solenoid Valve	\$455.80
SVX5BCOIL24A/D	Coil 24 VAC or 24 VDC Bonnet, Nut & Clip Replacement for 1/4" - 1/2" NPD Solenoid Valve	\$455.80
SVX17VCART	PVC Cartridge & FPM Seal Kit for 3/4" - 1" NPD Solenoid Valve	\$164.95
SVX17ECART	PVC Cartridge & EPDM Seal Kit for 3/4" - 1" NPD Solenoid Valve	\$158.10
SVX27VCART	CPVC Cartridge & FPM Seal Kit for 3/4" - 1" NPD Solenoid Valve	\$164.95
SVX27ECART	CPVC Cartridge & EPDM Seal Kit for 3/4" - 1" NPD Solenoid Valve	\$158.10
SVX472B	Bonnet Nut Replacement for 3/4" - 1" NPD Solenoid Valve	\$45.40
SVX1BCOIL120A	Coil 120 Volt Bonnet, Nut & Clip Replacement for 3/4" - 1" NPD Solenoid Valve	\$289.30
SVX1BCOIL220A	Coil 220 Volt Bonnet, Nut & Clip Replacement for 3/4" - 1" NPD Solenoid Valve	\$466.00
SVX1BCOIL12A/D	Coil 12 VAC or 12 VDC Bonnet, Nut & Clip Replacement for 3/4" - 1" NPD Solenoid Valve	\$466.00
SVX1BCOIL24A/D	Coil 24 VAC or 24 VDC Bonnet, Nut & Clip Replacement for 3/4" - 1" NPD Solenoid Valve	\$466.00

BFA/BFAS BULKHEAD FITTING GASKETS

Gaskets shown below will fit the BF/BFA/BFAS Series. BF Series Bulkhead Fittings (DISCONTINUED) have separate sizes for 1-1/4" & 1-1/2" **ONLY**.

STANDARD FLANGE

Price Code B

	FPM GASKETS		EPDM GASKETS	
SIZE	PRICE	PART NO.	PRICE	PART NO.
1/2"	\$11.70	BFXAGST005F	\$2.80	BFXAGST005E
3/4"	\$12.60	BFXAGST007F	\$2.80	BFXAGST007E
1"	\$14.60	BFXAGST010F	\$3.65	BFXAGST010E
1-1/4"*	\$14.60	BFXAGST015F	\$3.65	BFXAGST015E
1-1/2"*	\$14.60	BFXAGST015F	\$3.65	BFXAGST015E
2"	\$32.20	BFXAGST020F	\$7.10	BFXAGST020E
3"	\$41.90	BFXAGST030F	\$8.90	BFXAGST030E
4"	\$151.65	BFXAGST040F	\$31.95	BFXAGST040E
6"	\$161.35	BFXAGST060F	\$34.05	BFXAGST060E

* Fits BFA/BFAS Series ONLY. See BF Series table below for these size replacements in BF Series.

LARGE FLANGE

Price Code B

	FPM GASKETS		EPDM GASKETS	
SIZE	PRICE	PART NO.	PRICE	PART NO.
1/2"	\$12.80	BFXAGST005FL	\$3.10	BFXAGST005EL
3/4"	\$13.80	BFXAGST007FL	\$3.10	BFXAGST007EL
1"	\$15.90	BFXAGST010FL	\$4.10	BFXAGST010EL

BF SERIES ONLY

Price Code B

	FPM GASKETS		EPDM GASKETS	
SIZE	PRICE	PART NO.	PRICE	PART NO.
1-1/4"	\$14.60	BFXV150PP	\$3.65	BFXV0150PP
1-1/2"	\$14.60	BFXV150PP	\$3.65	BFXV0150PP

Discount Structure

A = _____
B = _____
C = _____
R = _____
W = _____



NSF/ANSI Standard 61

NSF/ANSI Standard 61 is a standard defining the requirements for products that are destined for use in drinking water systems. In summary, the standard requires immersion testing of all products that will come into contact with drinking water for any elements (i.e., lead, mercury, cadmium, etc.) that may leach into the water that passes through the product.

Many of Hayward's standard products underwent testing to this standard in 2007, and are now NSF listed products. Hayward's products that are NSF 61 listed can easily be found on the NSF website, www.NSF.org.

The following Hayward Flow Control products comply with this directive:

PRODUCT	SIZE	WATER CONTACT TEMP	WATER CONTACT MATERIAL
TB SERIES BALL VALVES			
Hayward True Union Ball Valve (PVC)	1/4" - 4"	CLD23	MLTPL
Hayward True Union Ball Valve (CPVC)	1/4" - 4"	CLD23	MLTPL
TC SERIES CHECK VALVES			
Hayward True Union Ball Check Valve (PVC)	1/4" - 4"	CLD23	MLTPL
Hayward True Union Ball Check Valve (CPVC)	1/4" - 4"	CLD23	MLTPL
BY SERIES BUTTERFLY VALVES			
Hayward Butterfly Valve (PVC/EPDM)	1-1/2" - 12"	CLD23	MLTPL
Hayward Butterfly Valve (CPVC/EPDM)	4" - 12"	D. HOT	MLTPL
BYCN SERIES BUTTERFLY VALVES (PVC/EPDM) [1]	2" - 8"	CLD23	MLTPL
SIMPLEX SB SERIES STRAINERS [2]			
Hayward True Union Ball Valve (PVC)	1/2" - 8"	CLD23	MLTPL
Hayward True Union Ball Valve (CPVC)	1/2" - 8"	D. HOT	MLTPL
BFAS SERIES (PVC/EPDM) BULKHEAD	1/2" - 3"	CLD23	MLTPL
BFA SERIES (PVC/EPDM) BULKHEAD	1/2" - 6"	CLD23	MLTPL
VALVE - OTHER			
Universal Stopcock™	1/4"	CLD23	MLTPL

[1] Certified for use in distribution systems only.

[2] Certified for use in water treatment plant applications only with a minimum daily flow rate of 3,120 gallons.

NOTE: Unless otherwise indicated for Materials, Certification is only for the Water Contact Material shown in the Listing.



Hayward Flow Control

A Division of Hayward Industries, Inc.

One Hayward Industrial Drive, Clemmons, NC 27012 USA

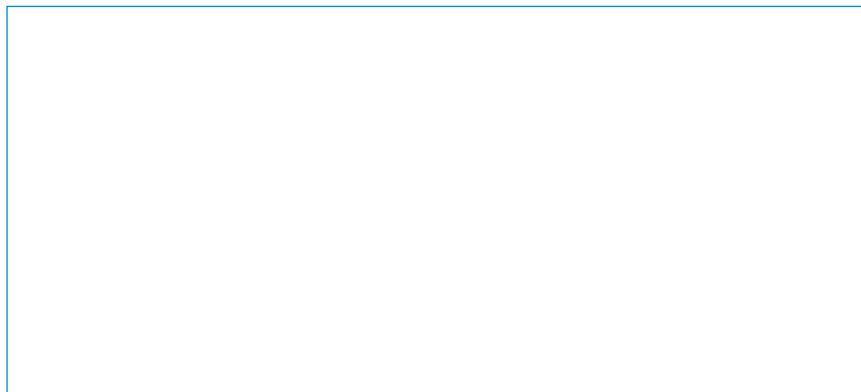
Phone 1-888-429-4635 • Fax 1-888-778-8410

e-mail: hflow@haywardnet.com

web site: www.haywardflowcontrol.com

1. **SHIPMENTS:** All shipments are F.O.B. Shipping Point. Unless specified, Hayward will use a carrier we believe best able to serve you. Hayward shall not be liable for failure to deliver or delays in delivering occasioned by acts of God, war, labor difficulties, inability to obtain materials or any other causes whatsoever beyond our control.
2. **CLAIMS:** All claims must be made in writing and received by Hayward within 10 days after receipt of merchandise. If a shipment is received in a damaged condition, a claim must be filed with the delivering carrier and noted on the freight bill before you accept the merchandise.
3. **TWO YEAR WARRANTY:** All products manufactured by Hayward are warranted against defects in material or workmanship for a period of two years from date of shipment. Our sole obligation under this warranty is to repair or replace, at our option, any product or any part or parts thereof found to be defective. **Hayward makes no other representation or warranty, express or implied, including, but not limited to, any implied warranty of merchantability or fitness for a particular purpose.** The warranty set forth above is the only warranty applicable to Hayward products and in no event shall Hayward be liable for any delay, work stoppage, cartage, shipping, loss of use of equipment, loss of time, inconvenience, loss of profits of any direct or indirect incidental resulting from or attributable to a breach of warranty. The remedies under this warranty shall be the only remedies available. **Our maximum liability shall not in any event exceed the contract price for the product.**
4. **RETURNS:** All returns must be accompanied by a Material Safety Data Sheet (MSDS) supplied by the End User, and a Return Goods Authorization (RGA) form which must be obtained from Hayward prior to shipment. Non-warranty returns of Price Code A items are not allowed. Non-warranty returns of Price Code B & C items will be allowed subject to a 25% restock charge. As an alternative, a replacement order of twice the value of the returned goods may be placed. Minimum restock charge is \$50.00. Unauthorized returns will not be accepted. Freight must be prepaid. Only standard products may be returned for credit, if in original condition and resalable.
5. **CANCELLATIONS:** Cancelled orders will be subject to a charge of 30%.
6. **TERMS:** 2% 10 days, net 30 days. A 1-1/2% per month service charge, subject to applicable law, will be applied to all past due invoices. You shall be liable for reasonable attorneys' fees incurred by us in collecting any past due invoices.
7. **TAX:** Any Federal or State Excise or Sales Tax for which we may be liable on any sale will be charged to and paid by the buyer. Buyer is responsible for furnishing tax exempt or resale certificate.
8. **FREIGHT ALLOWANCE:** Freight cost will be allowed on orders with a net billing of \$2,000.00 (US Dollars) or more, with our choice of carrier, in the continental United States with the exception of Alaska.
9. **MINIMUM BILLING CHARGE:** \$50.00 net.
10. **PRICING:** Pricing and specifications of products are subject to change without notice. All orders are subject to prior sale and credit approval.
11. **GENERAL:** Any sale shall be governed by the laws of the State of New Jersey (without regard to its conflict of laws rules). Any representation, promise, modification or amendment of these Terms and Conditions of Sale shall not be binding upon us unless in writing and signed on our behalf by a duly authorized representative. The foregoing terms and conditions shall prevail notwithstanding any variance with the terms and conditions of any order submitted by you, unless Hayward expressly consents in writing to such a variance.

Hayward Flow Control Products Available From:



© Copyright Hayward Flow Control 2012 Rev. 8/12 Printed in USA

Hastelloy® is a registered trademark of Haynes International Inc. Monel® is a registered trademark of Special Metals Corporation. Eastar® is a registered trademark of Eastman.